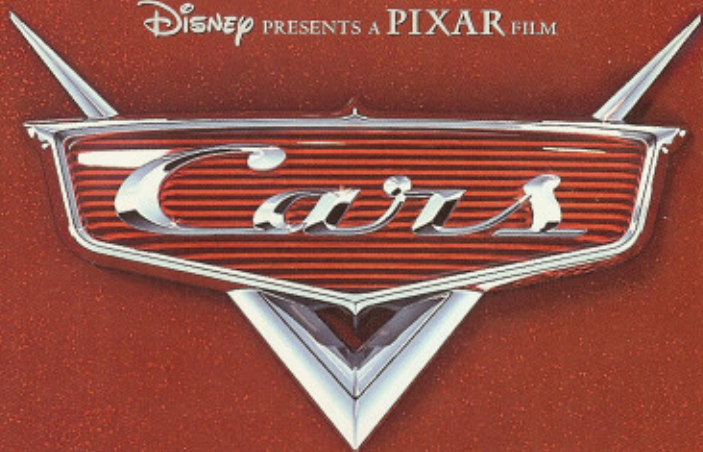


Disney PRESENTS A PIXAR FILM



Available  
fall 2005

EmuMovies

Disney PRESENTS A PIXAR FILM

# THE INCREDIBLES



GAME BOY ADVANCE



INSTRUCTION BOOKLET

PRINTED IN USA 104799

**WARNING: PLEASE CAREFULLY READ THE PRECAUTIONS BOOKLET INCLUDED WITH THIS PRODUCT BEFORE USING YOUR NINTENDO® HARDWARE SYSTEM, GAME DISC OR ACCESSORY. THIS BOOKLET CONTAINS IMPORTANT SAFETY INFORMATION.**

**IMPORTANT SAFETY INFORMATION: READ THE FOLLOWING WARNINGS BEFORE YOU OR YOUR CHILD PLAY VIDEO GAMES**

### **⚠ WARNING - Seizures**

- Some people (about 1 in 4000) may have seizures or blackouts triggered by light flashes, such as while watching TV or playing video games, even if they have never had a seizure before.
- Anyone who has had a seizure, loss of awareness, or other symptom linked to an epileptic condition should consult a doctor before playing a video game.
- Parents should watch when their children play video games. Stop playing and consult a doctor if you or your child have any of the following symptoms:

Convulsions	Eye or muscle twitching	Loss of awareness
Altered vision	Involuntary movements	Disorientation

To reduce the likelihood of a seizure when playing video games:

1. Sit or stand as far from the screen as possible.
2. Play video games on the smallest available television screen.
3. Do not play if you are tired or need sleep.
4. Play in a well-lit room.
5. Take a 10 to 15 minute break every hour.

### **⚠ WARNING - Repetitive Motion Injuries**

Playing video games can make your muscles, joints or skin hurt after a few hours. Follow these instructions to avoid problems such as Tendinitis, Carpal Tunnel Syndrome or skin irritation:

- Take a 10 to 15 minute break every hour, even if you don't think you need it.
- If your hands, wrists or arms become tired or sore while playing, stop and rest them for several hours before playing again.
- If you continue to have sore hands, wrists or arms during or after play, stop playing and see a doctor.

### **⚠ WARNING - Electric Shock**

To avoid electric shock when you use this system:

- Do not use the Nintendo GameCube during a lightning storm. There may be a risk of electric shock from lightning.
- Use only the AC adapter that comes with your system.
- Do not use the AC adapter if it has damaged, split or broken cords or wires.
- Make sure that the AC adapter cord is fully inserted into the wall outlet or extension cord.
- Always carefully disconnect all plugs by pulling on the plug and not on the cord. Make sure the Nintendo GameCube power switch is turned OFF before removing the AC adapter cord from an outlet.

### **⚠ CAUTION - Motion Sickness**

Playing video games can cause motion sickness. If you or your child feel dizzy or nauseous when playing video games with this system, stop playing and rest. Do not drive or engage in other demanding activity until you feel better.

### **⚠ CAUTION - Laser Device**

The Nintendo GameCube is a Class I laser product. Do not attempt to disassemble the Nintendo GameCube. Refer servicing to qualified personnel only.

Caution - Use of controls or adjustments or procedures other than those specified herein may result in hazardous radiation exposure.

### **CONTROLLER NEUTRAL POSITION RESET**

If the L or R Buttons are pressed or the Control Stick or C Stick are moved out of neutral position when the power is turned ON, those positions will be set as the neutral position, causing incorrect game control during game play.

To reset the controller, release all buttons and sticks to allow them to return to the correct neutral position, then hold down the X, Y and START/PAUSE Buttons simultaneously for 3 seconds.



The official seal is your assurance that this product is licensed or manufactured by Nintendo. Always look for this seal when buying video game systems, accessories, games and related products.



Nintendo does not license the sale or use of products without the Official Nintendo Seal.



1 Player

**THIS GAME SUPPORTS  
GAME PLAY WITH ONE  
PLAYER AND CONTROLLER.**



Memory Card

**THIS GAME REQUIRES A  
MEMORY CARD FOR SAVING  
GAME PROGRESS, SETTINGS  
OR STATISTICS.**

*Copying of any video game for any Nintendo system is illegal and is strictly prohibited by domestic and international intellectual property laws. "Back-up" or "archival" copies are not authorized and are not necessary to protect your software. Violators will be prosecuted.*

*This video game is not designed for use with any unauthorized copying device or any unlicensed accessory. Use of any such device will invalidate your Nintendo product warranty. Nintendo (and/or any Nintendo licensee or distributor) is not responsible for any damage or loss caused by the use of any such device. If use of such device causes your game to stop operating, disconnect the device carefully to avoid damage and resume normal game play. If your game ceases to operate and you have no device attached to it, please contact the game publisher's "Technical Support" or "Customer Service" department.*

*The contents of this notice do not interfere with your statutory rights.*

*This booklet and other printed materials accompanying this game are protected by domestic and international intellectual property laws.*



LICENSED BY



NINTENDO, NINTENDO GAMECUBE AND THE OFFICIAL SEAL ARE TRADEMARKS OF NINTENDO.  
© 2001 NINTENDO. ALL RIGHTS RESERVED.

## CONTENTS

3

Story .....	4
Controls .....	5
Menu Options .....	6
Game Screen .....	8
Items .....	10
Levels .....	11
Playable Characters .....	15
Enemies: Henchmen .....	19
Enemies: Robots .....	20
Credits .....	22
Limited Warranty .....	33



**ARE YOU READY** to play as one of the world's greatest superheroes [known to all as Mr. Incredible] and as his family of supers? You'd better be; this mission needs the help of Mr. Incredible's entire family and friends, too! After reminiscing about the days before he struggled into his super suit, Mr. Incredible receives a mysterious call that summons him to a remote island for a top-secret assignment. With a new purpose, he heads off to the island of Nomanisan for an extraordinary battle of wits and superpowers. Watch out world: It's Showtime!

### Nintendo GameCube™ Controller

The following is the default Controller setup.

The default setting for the Rumble Feature is ON. The Rumble Feature can be turned OFF in the Options Menu.



### MENU CONTROLS

+Control Pad	Highlight menu selection
Control Stick	Highlight menu selection
A Button	Confirm menu selection
B Button	Return to previous menu

### GAME CONTROLS

Control Stick	Control Character
C Stick	Move Camera
A Button	Jump
* (not available on Incredi-Ball)	
B Button	Punch
(Mr. Incredible, Mrs. Incredible)	

X Button	Grab	(Mr. Incredible, Mrs. Incredible)
X Button	Throw	(Mr. Incredible, Mrs. Incredible)
X Button	Action	(Mr. Incredible, Mrs. Incredible, Violet)
Y Button	Incredi-Attack/Move	
L Button	First person Camera view	(Mrs. Incredible)
R Button	Crouch/Roll	(Mr. Incredible)
R Button	Stretchy Punch/Grapple/Swing	(Mrs. Incredible)
L + Z Button	Center Camera	
START	Start game/Pause menu	

**NEW GAME**

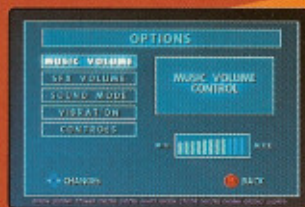
Highlight this option with your +Control Pad, then press the A Button to begin a brand-new adventure! When you begin, you'll be asked whether you'd like to create a Save File. You need a Nintendo GameCube® Memory Card to save your game - make sure you have one plugged in! You can have up to three Save Files.

**LOAD GAME**

During your game, you can save your progress at any time. When you return to your game, choose this option to load a game you've already saved. Then you can hop right back into the action!

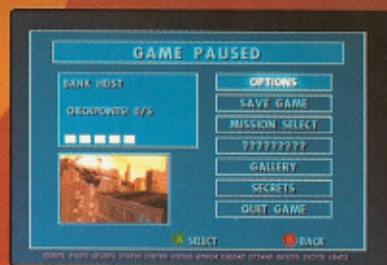
**OPTIONS**

Turn the Music Volume (the tune playing in the background), and the SFX Volume (the grunts, zaps, and shrieks in the game) up or down. Change the sound mode from Mono (one speaker), Stereo (two), or Dolby® Surround. Finally, turn the Controller Rumble Feature on or off. All options are changed with the + Control Pad or Control stick.

**BONUS**

Enter this menu to view bonus videos about the movie and the game.

<b>Super Tip!</b>	<b>Menu Controls</b>
+Control Pad: Highlight Selection	
A Button: Approve selection	
B Button: Go back to previous screen	



Press START during the game to access this Pause Menu. There are a number of options here; select one with the A Button, or return to the game with the B Button. The top left area shows the name of the level you're playing, and how many checkpoints you've passed. Underneath is a video of the level you're in. To the right is a list of sub-menus.

**Options** – Allows you to enter the main options menu, just like you could at the Main Menu. You can change the music, sound effects, sound, Controller Rumble Feature, and look at the current controls.

**Save Game** – Save your progress at any time from this screen.

**Mission Select** – Enables you to replay any missions you have already unlocked.

**?????????** – What form of hidden game mode is this? It appears as ??????? until you unlock it.

**Gallery** – View artwork and videos unlocked by collecting Bonus Item pickups in the game.

**Secrets** – Shhh! There's some Incredible codes to type in at this screen, but we can't tell you what they are yet! Visit

[www.incrediblesgame.com](http://www.incrediblesgame.com) for the latest secrets and information on this game!

**Quit Game** – Ready to quit? Never! But just in case, choose this to return to the Main Menu. Don't forget to save first!

**Super Tip! More Moves**

Your Incredibles team has many more super moves at their disposal. Check the Characters and Moves section for all the information!

## GAME SCREEN



**Incredible Icon** – This quickly shows you your health and Incredi-Meter. The “I” dot flashes when you’re at 25 percent health or less.

**Health Meter** – Shows how much health you have left. Collect Health to fill this bar. If you take damage, the Health Meter goes down clockwise. If it empties completely, you’ll restart at the last checkpoint.

**Incredi-Meter** – Each time you attempt an Incredi-Move, this empties a little. Certain items and defeating henchmen add to this meter. So start swinging!

**Special Action Meter** - This is used to show how “charged” a move is or how much longer the player has to repeatedly press the button to lift things.

**Enemy** – This is the enemy you’re currently attacking; in this case, Bomb Voyage’s henchman!

**Instructions** – If you see information here, be sure to read it!

### STATISTICS

Once you complete each level, your skills are comprehensively detailed in a series of statistics shown in the screen to the right.



## GAME SCREEN



**Dash Meter (Dash Levels Only)** – Check the screen above, and you’ll spot the Dash Meter on the right side of your screen. It is used to track the progress throughout the level you’re running through. Below is a description of how to read this meter:

**Dash Icon** – The Dash icon on the line along the right side of the screen shows you the location of Dash. It moves from the bottom of the meter to the top as you continue through the level.

**Checkpoints** – Notice orange bars appearing at the top of the meter and slowly moving towards the Dash icon? These are checkpoints. When Dash passes through the checkpoint, you’ve passed through it too! If Dash is defeated by being tripped, striking objects, or overheating, you start at the last orange bar you ran through.

**Time** – At the top of the screen, you’ll see a timer. This shows how much time remains until Dash reaches his goals.

**MPH** – Meaning “miles per hour”, and appearing on the bottom left hand corner of your screen, this indicates Dash’s speed.

**% (Percent)** – Check the bottom of the timer for a percentage that increases once you start. When you reach 100%, the level is done!

When you're thwacking evil-doers left and right, here are a couple of items that are handy for your plight!



**Health:** Replenishes your health.

Red-50% Replenishment  
Yellow-25% Replenishment  
Green-10% Replenishment



**Incredi-Power Increase:** Replenishes your Incredi-meter.

Red-50% Replenishment  
Yellow-25% Replenishment



**Bonus Item:** Unlocks artwork and videos in the Gallery.



**Incredi-Pointer:** Provides in-game instructions.



18 stages of robots and thugs are ready to hack; here's what to expect so that you can stay on track.

#### Level 1:

##### **BANK HEIST**

A young Mr. Incredible is on the trail of Bomb Voyage, the elusive criminal mastermind, and his host of cronies. There are a series of bank robberies and Mr. Incredible correctly assumes that this devious burglar is making off with the loot. It's up to Mr. Incredible to stop him!



#### Level 2:

##### **SKYLINE STRETCH**

That Bomb Voyage is one slippery customer, and as the chase heats up, Helen (the future Mrs. Incredible) joins in to help in his apprehension. Can she halt Bomb Voyage once and for all?



#### Level 3:

##### **BUDDY PINE & BOMB VOYAGE**

Buddy Pine's rocket boots are an impressive piece of jet technology, but Mr. Incredible doesn't want to examine them quite this close! Taking off on a wild ride across the city as he tries to remove a bomb from Buddy's cape, Mr. Incredible drops onto a rooftop right next to that master thief, Bomb Voyage – time for his journey to end!



#### Level 4:

##### **APARTMENT INFERNO**

Remember superheroes' lives in the good old days? There was respect, adoration, and people screaming for help from a burning building. Great news! Mr. Incredible's old friend Frozone is back, and so is the excitement! Are they getting in over their heads?



**Level 5:****LATE FOR SCHOOL**

The bus has left again without Dash. He's late! Or is he? With some sneaky superpower moves he may make it on time. Being the speediest person around does have its benefits though. It's time to test his sprinting ability and get to school before the bus does.

**Level 6:****BEACH LANDING**

The mysterious Mirage has offered Mr. Incredible a top-secret assignment that he's in no position to refuse. Moments later, she debriefs him while on a jet plane heading straight toward Nomanisan Island.

**Level 7:****NOMANISAN ISLAND**

After an unforgettable landing on Nomanisan Island, Mr. Incredible only gets to stretch his legs briefly before he has to start battling robots once again. Mirage warned him the Omnidroid is loose and wreaking havoc on the island, but where is it? It's up to Mr. Incredible to find and destroy it!

**Level 8:****VOLCANIC ERUPTION**

Mr. Incredible's luck matches his name, and he locates the Omnidroid. It's at about this point that Mr. Incredible wishes he had Frozone with him. The metal monstrosity throws Mr. Incredible into the mouth of an active volcano, and then dives in itself to finish the job!

**Level 9:****ROBOT ARENA**

After destroying the Omnidroid in his first mission Mr. Incredible has a new lease on life. He is now back on Nomanisan ready for adventure again. On his way to the conference room to get debriefed, he runs into a couple of obstacles. Don't worry - nothing can stop Mr. Incredible!

**Level 10:****GREAT FALLS**

It's bigger, it's better, and it's back! Is it too much for Mr. Incredible? The giant metallic shape starts to block out all the lights. An even more impressive Omnidroid engages Mr. Incredible in hand-to-claw combat.

**Level 11:****SYNDROME'S BASE**

Just what is really going on within the belly of Nomanisan Island? Mr. Incredible will soon discover more about Syndrome's diabolical plan. He now has to figure out what happened to his former allies and stop Syndrome, preferably in spectacular fashion.

**Level 12:****FINDING MR. INCREDIBLE**

Suspicious of her husband's whereabouts, Mrs. Incredible and the kids fly out to Nomanisan to find Mr. Incredible. After a horrific landing, Mrs. Incredible leaves the kids in a cave and takes off on her own adventure inside Syndrome's base to find her husband.

**Level 13:****100 MILE DASH**

Uh-oh! Dash is running for his life in a deadly race against the pursuing velocipods! These henchman-driven flying contraptions are as deadly as they are fast, and Dash needs every ounce of energy to keep one step ahead of them.

**Level 14:****VIOLET'S CROSSING**

With Dash speeding away, Violet is left to fend for herself. She's not too worried though; she doesn't cut enough of an imposing figure to worry Syndrome's henchman. In fact, her plan is to not reveal herself at all - invisibility is the best method of escape!





**Level 15:****INCREDI-BALL**

Dash escapes Syndrome's flying fiends, while Violet completes her stealthy sneak. They both meet up to combine their powers into a fearsome Incredi-Ball. Take Violet's force field, add Dash's speed, and mix together to form a real force to be reckoned with.

**Level 16:****SECRET LAVA LABS**

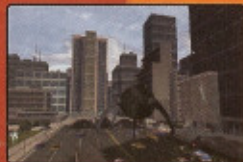
While the kids are having a ball, Mrs. Incredible has finally arrived at the inner sanctum of the reprehensible Syndrome. He doesn't make his underground lair easy to navigate, but continue she must in order to locate Mr. Incredible.

**Level 17:****ROCKET SILO**

The Incredibles meet up and try to find a way off of the island. They run right into the rocket bay. Violet's idea is to use the rocket, but they run into trouble when they discover that the power to the entire silo is out. Meanwhile, Mrs. Incredible tries to re-establish power to the rocket silo, and Mr. Incredible heads off to ready the rocket that will fly his family home.

**Level 18:****SAVE THE WORLD**

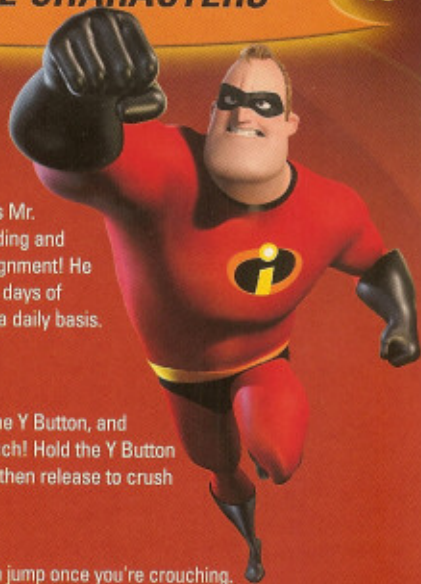
What seemed like a hair-brained scheme to blast back to civilization has worked! Of course, when The Incredibles arrive, they see that their work isn't done. Syndrome's greatest invention is wreaking havoc on Metroville. Can Syndrome save the city and finally be super?



Welcome the heroes of the game.

**MR. INCREDIBLE**

Once considered one of the world's greatest superheroes (known to all as Mr. Incredible), Bob Parr comes out of hiding and accepts a mysterious top-secret assignment! He can't wait to get back to the good old days of saving the world, and fighting evil on a daily basis.

**Incredi-Moves!****Incredi-Punch**

Charge your Incredi-Meter up, hold the Y Button, and release it to unleash your Incredi-Punch! Hold the Y Button while Mr. Incredible is in mid-air, and then release to crush anything directly below you.

**Crouch-Jump**

Want to leap higher than normal? Then jump once you're crouching.

**Roll**

Press and hold the R button, then move and hold the Control Stick (in the direction you want to move), then press the A button.

**Throw**

A useful technique to deal with airborne foes. Stand next to the object (or enemy), press the X Button to pick it up, and press the X Button again to launch it.

**Incredi-Actions!****Incredi-Jump**

Have you found an Incredi-Pointer? Then press and hold the A Button, and release it for a truly spectacular leap!

**Incredi-Turn**

Grab large objects with the X Button, and use the Control Stick to turn them in place.

**Incredi-Lift**

Got a really heavy object blocking your path? Then stand next to it and tap the X Button repeatedly until you lift it up and out of the way!

**Incredi-Throw**

Lift up a henchman with the X Button, and instead of pressing the X Button again, press and hold the Y Button for an even longer throw!

**MRS. INCREDIBLE**

Mrs. Incredible misses the old days, but doesn't dwell on those times as she has a wonderful family and is quite happy to spend her time with them. It is only until her family is in danger does she reassume her secret identity and use her elastic powers to save the day.

**Incredi-Moves!****Stretching**

Mrs. Incredible has stretching talents that can knock out henchman from far away. Press the R Button when a henchman is targeted and knock him out.

**Throwing**

Press and hold the X Button, and you'll grab a henchman before throwing him. Rotate the Control Stick in mid-throw to change the direction you throw him.

**Swinging**

When near a grapple point, shown by an Incredi-Pointer, press and hold the R Button to swing across a gap. Release the R Button to let go of the grapple point.

**Incredi-Actions!****Incredi-Punch**

Press the Y Button to unleash Mrs. Incredible's Incredi-Punches. The longer you hold the button, the stronger the attack will be!

**VIOLET**

Violet Parr, like her parents has special powers, and it seems only right that hers allow her to turn invisible and protect herself with an equally invisible shield. While on Nomanisan, she learns to confront fearsome situations, turning her defensive energies into an offensive force.

**Incredi-Moves!****Invisibility**

Press and hold the Y Button to use Violet's invisibility power. Hold the button too long though, and you'll deplete her Incredi-Meter, so use this sparingly.

**Incredi-Actions!****Incredi-Ball**

Once Violet meets up with Dash, she'll use her force field ability in conjunction with Dash's speed to form the Incredi-Ball. Almost nothing can stand in their way when they work together!



**DASH**

The smallest member of The Incredibles family, next to Jack-Jack, is also the quickest. Being able to run as fast as he can is awesome! But these Nomanisan baddies aren't like the ones on TV. They don't hold back!

**Incredi-Actions!****Incredi-Boost**

While running, press the Y Button for a turbo boost. Watch out! Hold the button too long, and Dash will overheat due to all that friction.

**Incredi-Ball**

Once Dash meets up with Violet, they can form the Incredi-Ball. Use Dash's speed to navigate the Incredi-Ball, and destroy henchmen and anything else in your path.

**Incredi-Ball Tips**

In a pinch, Dash and Violet are a great brother and sister team! Be sure you learn the following tips and keep the ball rolling to help defeat Syndrome's henchmen.

<i>Super Tip!</i>	<b>Keep Healthy</b>
	Watch that health meter! Henchmen attacks and laser beams damage the Incredi-Ball. Lose all your health and Violet will lose her concentration. This will cause the Incredi-Ball to disappear, leaving Dash and Violet defenseless!

**Full Force!**

Use the Incredi-Ball to send henchmen flying! You can also use it to destroy generators that can't be reached.



These evil-doers don't have enough clout; we've uncovered some weaknesses so the Incredibles can win every bout!

**ARSONIST**

Burning down an apartment building in lower downtown, these pyromaniacs need to be taught a lesson. Put up your dukes and keep the pounding going!

**NOMANISAN ISLAND HENCHMAN**

Are you an evil genius bent on diabolical revenge with a secret subterranean volcano base? Then do we have the guards for you! Not too bright, fiercely loyal, and guaranteed to waylay superheroes. Syndrome must have seen the advertisement; these henchmen are swarming the island.

**ARMORED HENCHMAN**

Imagine a henchman with enough seniority to afford a set of armor and strong enough to stand up to Mr. Incredible's punching. However, it isn't solid enough to withstand repeated pummeling, so get in up close and personal.

**LOBBER HENCHMAN**

These adversaries launch bombs in your general direction. You've got a second or two before the devices explode. Make good use of this time and launch the bomb back where it came from. Bombs can only be picked up when green.

**FLYING LOBBER HENCHMAN**

If you've encountered a Lobber Henchman, you know what to expect. Except these henchmen fly about on personal helicopter units. Roast their rotors in the same manner as before.

**LASER GUN HENCHMAN**

Deadly both far and near to you, these thugs come armed with laser guns, and they aren't afraid to use them! Use your impressive dodging ability to avoid those blasts, and finish them off.

**FLYING LASER GUN HENCHMAN**

Don't these guys ever stop?! Throw an object at them before they try and blast you. Hitting them before they fire sends them into a flat spin, down to the ground.

**SHIELD HENCHMAN**

They may not be much offensively, but attacking them directly won't get you anywhere. If these baddies get in your way, you'll have to throw at them everything available within reach to take them out.

## ENEMIES: ROBOTS

Robots are nasty and an attack really jolts, be sure you attack well, and unscrew their bolts!



### COCKATIEL

Avoid the brightly colored birds. They're actually hidden cameras strategically placed by Syndrome throughout the island. If one spots you or you set it off, you'll alert any nearby enemies thanks to the piercing alarm these security sentries emit!



### HELIBOT

A hovering robot with an electrical discharge that will shock you if you stand under it. This terror from above can only be reached after an Incredi-Jump to its level. Then clip those rotor blades and bring the Helibot down to earth for good.



### VELOCIBOT

These are just as nasty as the henchman-piloted velocipods, but don't have a pilot. This means carefully aiming and shooting them down to earth as quickly as possible is your only option.



### LEAPERBOT

These robots are the peskiest around. When you try to get in close to attack, they leap back away from you. Of course, they launch an airborne barrage to make you think twice about chasing them! Dodge that devastation, and keep following the Leaperbot until it runs out of room. Then finish it!



### MELEEBOT

Nomanisan Island is teeming with them! They spawn from robot generators in the dense jungle ground. Dodge their scanning lasers, or face their array of charging and slicing attacks. Instead, leap at them and stun them, using them to defeat other robots.

## ENEMIES: ROBOTS



### SEEKERBOT

As you might expect, these robots seek and then destroy. The only problem is they're programmed to execute this program when they spot you! If you're caught close to their explosion, expect a singed super suit at the very best. Use whatever means you can to explode these kamikaze devices in mid-flight.



### TANK

Although sharing the name of a tracked vehicle with a turret, this is a slightly more incredible version. Armed with a mass of weaponry from lasers to bombs, it will use any of them to defeat you. If you're able to turn one of the tank's weapons back on it, giving it a taste of its own medicine, you'll take it down.



### OMNIDROID

CENSORED! THIS MATERIAL HAS BEEN DEEMED "CLASSIFIED" BY SYNDROME CORPORATION! AVERT YOUR EYES!

**DEVELOPED BY  
HEAVY IRON STUDIOS**
**Director**

Shiraz Akmal

**Executive Producer**

Lyle Hall

**Lead Programmer**

Daniel Sass

**Technical Director**

Jason Haerner

**Programmers**

Chris Bannock  
Kin Wai Choi  
Matt Gilgenbach  
Adam Hayek  
Dan Kollmorgen  
Travis McIntosh  
Phillip Nowell  
Ragnar Scheuermann  
Michael Scholz  
Svetoslav Todorov  
Justin Wilder

**Lead Game Designer**

Kirk Tome

**Game Designers**

Mark Acero  
Gary Brown  
Matt Elkins  
Tony Fiorella  
Lynn Henson  
Razmig Pulurian

**Lead Artist**

Alex Carbonero

**Art Director**

Jeff Bering

**Artists**

Tom Breenen  
Brice Broadbudd  
Alex Chavez  
Dorothy Chen  
Yongwoo Cho  
John Ericco  
Thom Olsen  
Sylvia Park  
Sean Ro

**Lead Animator**

Kyle Kirby

**Animation Director**

Gregory Ecklund

**Character Animation Team**

Vivien Chang  
Daniel Fiske  
Gary Myers  
Thom Dixon  
Saurav Sarkar

**Producer**

Stephen Townsend

**Assistant Producer**

Kristian Davila

**Production & Localization****Support**

Keith Pope

**Lead Tester**

AJ Hernandez

**Testers**

Gamer Knutson  
Roy Gnan  
David Foy  
Darci Morales

**Localization Manager**

Amy Small

**Programming Support**

Amra Dhanwadekar  
Randy Dillon  
Neil Kaapuni  
Ryan Mapes  
Karen Paik  
Mark Pope  
Eric Will

**Additional Artwork**

Zachary Adams  
Jeffery Black  
R. Scott Caple  
Harbell Ilustre  
Reiko Sato  
Edward Toth

**Concept Artwork**

R. Scott Caple

**Instruction Manual**

Kristian Davila

**Sound FX Design**

Tommy Tallarico Studios, Inc.

**Sound Designer**

Nathan Smith

**Audio Support**

William Nadal  
Jason De Heras

**Music**

Michael Giacchino

**Additional Music, Arranging & Orchestration**

Chris Tilton  
Tim Simonec

**Score Engineer**

Dan Wallin

**Recordist**

Paul Wertheimer

**Score Copyist**

Greg Nestor

**Orchestra Contractor**

Reggie Willson

**Orchestra Performers**

Hollywood Studio Symphony at Paramount Studios

**Senior System Administrator**

Joachim Thuau

**Operations Manager**

Colin Walter

**Office Assistant**

Angie Kim

**Director of Development**

Shiraz Akmal

**General Manager**

Lyle Hall

**Special Thanks:**

David Kimball & Studley Inc.  
Alan Hartley & Canwood Construction  
AJ Wilder, Rick Paransen & Walcott AI  
All of our loved ones for their support and patience...

**THQ, INC.**

Ex. VP Worldwide Studios  
Jack Sorensen

**Director, Quality Assurance**

Monica Vallejo

**Test Supervisor**

Travisty Tholan

**Test Lead**

Nickolas Gardner  
Amin Razi  
Lorena Villa  
Justin Drolet

**Testers**

Alexis Ladd  
Paul Adriano  
Jared Hickman  
Craig Scheile  
Tim Flanagan  
Brooks Rowlett  
Sven Roackowff  
Dylan Ross  
Bridget Roy  
Josh Kraoff  
Christopher Gomez  
Paul Mahoney  
Terrance Oppenheimer  
Shad Garton  
Carlos Aguilar  
Walter Doyenart  
Emily Combs  
Jeff Falstrom  
Stewart Rodriguez  
Lance Spott  
Jacob Burke  
Vahagn Kirakosian  
Matt Esterline  
John New  
Sam Martin  
Patrick Thomson  
Dioscora Rochino  
Colin Harmon

**First Party Supervisor**

Evan Icenbice

**First Party Specialists**

Adam Afrunt  
Scott Ritchie  
Johi Dagang

**QA Operations Manager**

Mario Weibel

**QA Technicians**

James Krentz  
Brian McElroy

**Mastering Lab Technicians**

Charles Batarso  
Glen Peters  
Jon Katz

**Database Applications Engineer**

Jason Roberts

**Game Evaluation Team**

Sean Heffron  
Matt Elzie  
Scott Frazier

**Senior Vice President - Worldwide Marketing**

Peter Dille

**Director - Global Brand Management**

Alison Quinion

**Senior Global Brand Manager**

Trent Hersthenson

**Global Brand Manager**

David Kim

**Associate Brand Manager**

Peter Kennedy

**Director of Creative Services**

Howard Liebeskind

**Creative Services Manager**

Kirk Somdaj

**Director of Media Relations**

Liz Pileri

**Senior Media Relations Manager**

Kristina Kirk

**Media Relations Manager**

Kathy Mendoza

**Media Relations Coordinator**

Gretchen Armerding

**Instruction Manual**

David S J Hodgson

**Packaging and Manual Design**

Price Design

**THQ INTERNATIONAL**

Director, Global Brand Management

Michael Pattison

**Senior Global Brand Manager**

Jenniffer Wyatt

**Marketing and Services Manager**

Julian Socquet-Clerc

**Global PR Manager**

Neena Patel

**Senior Project Manager Art**

Till Enzmann

**Internal Creative, DTP Operator**

Anja Umbiet

Deslef Tapper

Dirk Offenberg

Jens Spangenberg

Ramona Sackers

Ramona Stell

**Director of Localisation**

Susanna Dieck

**Localisation Engineer**

Bernd Kurtz

**Head of UK Marketing**

Richard Williams

**UK Product Marketing Manager**

Angela Bateman

**UK PR Manager**

Helen Myers

**Head of Product Management, Germany**

Christina Etdlebrueck

**Head of PR, Germany**

Raoul Birkhold

**Marketing Director, Asia Pacific**

Mike Kalodzinski

**Assistant Marketing Manager, Asia Pacific**

Elizabeth Kotevska

**PR Manager, Asia Pacific**

Estelle Diever



# ALSO AVAILABLE!

Help the Power Rangers stop Mesogog's evil plans.

# POWER RANGERS DINOTHUNDER



GAME BOY ADVANCE

THQ  
www.thq.com



© 2004 THQ Inc. Power Rangers Dino Thunder and all related logos, names and characters are trademarks of THQ Inc. and Buena Vista International, Inc. All Rights Reserved. THQ and the THQ logo are trademarks and/or registered trademarks of THQ Inc. All Rights Reserved. All other trademarks, logos and copyrights are property of their respective owners. TM, ®, Game Boy Advance and the Nintendo GameCube logo are trademarks of Nintendo.



Disney PRESENTS A PIXAR FILM

# THE INCREDIBLES

SAVE THE DAY • NOVEMBER 5

READ THE COMICS COMING FROM DARK HORSE THIS WINTER.

[www.theIncredibles.com](http://www.theIncredibles.com)

[www.darkhorse.com](http://www.darkhorse.com)



The Incredibles ©2004 Disney Enterprises, Inc./Pixar Animation Studios. Dark Horse Comics® is a trademark of Dark Horse Comics, Inc., registered in various categories and countries. All rights reserved.

## Also Available



Disney PRESENTS A PIXAR FILM

# THE INCREDIBLES

PIXAR  
ANIMATION STUDIOS



EVERYONE

**E**

Violence

ESRB CONTENT RATING

[www.esrb.org](http://www.esrb.org)

GAME BOY ADVANCE



[www.thq.com](http://www.thq.com)

© Disney/Pixar. © 2004 THQ Inc. THQ and the THQ logo are trademarks for and/or registered trademarks of THQ Inc. All Rights Reserved. All other trademarks, logos and copyrights are property of their respective owners. THE INCREDIBLES IS A TRADEMARK OF DISNEY ENTERPRISES, INC. THE INCREDIBLES IS A TRADEMARK OF PIXAR ANIMATION STUDIOS. THQ, ©, GameBoy Advance is a trademark of Nintendo.



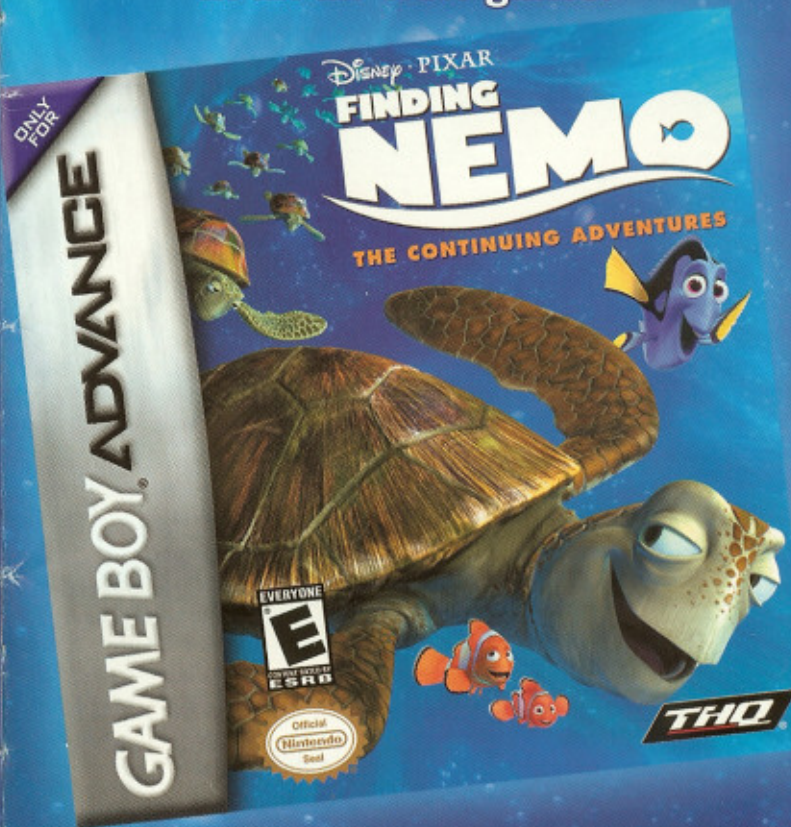
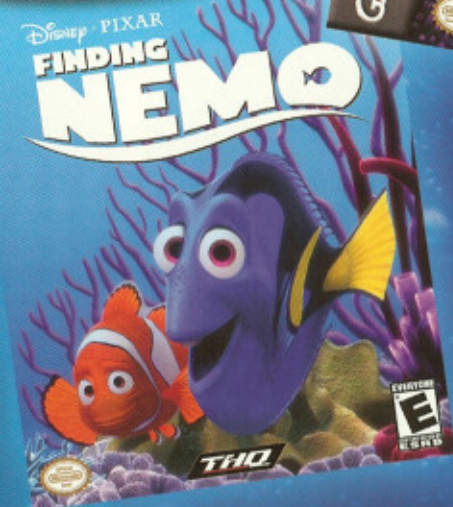
# DIVE INTO ADVENTURE!

# LOOK WHO'S BACK!

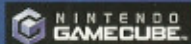
Nemo and his friends are back in an all-new game!



PLAYER'S CHOICE  
NINTENDO GAMECUBE



GAME BOY ADVANCE



PIXAR  
ANIMATION STUDIOS



www.thq.com

Finding Nemo. ©2004 Disney/Pixar. Licensed by THQ Inc. THQ and its logo are trademarks and/or registered trademarks of THQ Inc. All rights reserved. All other trademarks, logos and copyrights are property of their respective owners. Finding Nemo is a Walt Disney Pictures Production of a Pixar Animation Studios Film.



GAME BOY ADVANCE



PIXAR  
ANIMATION STUDIOS



www.thq.com

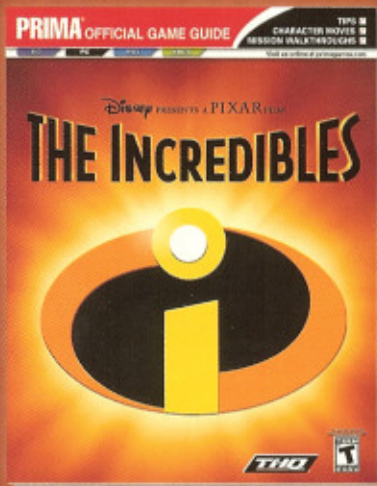
Finding Nemo. ©2004 Disney/Pixar. Licensed by THQ Inc. THQ and its logo are trademarks and/or registered trademarks of THQ Inc. All rights reserved. All other trademarks, logos and copyrights are property of their respective owners. Finding Nemo is a Walt Disney Pictures Production of a Pixar Animation Studios Film.

# YOU'VE GOT THE GAME, NOW GET THE GUIDE!

Disney PRESENTS A PIXAR FILM

# THE INCREDIBLES

## PRIMA OFFICIAL GAME GUIDE



- SUPER STRATEGIES FOR ALL 18 EXPANSIVE LEVELS
- SAVE-THE-DAY TIPS FOR FIGHTING, RACING, AND PUZZLE SOLVING
- POWERFUL GAMEPLAY TACTICS FOR ALL 4 PLAYABLE CHARACTERS
- MAPS TO GUIDE YOU THROUGH EVERY AREA
- SECRETS EXPOSED

Disney  
INTER  
ACTIVE  
GAMES

PIXAR  
ANIMATION STUDIOS

THQ  
www.thq.com

The Incredibles © Disney/Pixar. Licensed by THQ Inc. THQ and its logo are trademarks and/or registered trademarks of THQ Inc. All rights reserved. All other trademarks, logos and copyrights are property of their respective owners.

**primagames.com®**

The Prima Games logo is a registered trademark of Random House, Inc., registered in the United States and other countries. Primagames.com is a registered trademark of Random House, Inc., registered in the United States.

### Warranty and Service Information

In the unlikely event of a problem with your product ("Product"), you may only need simple instructions to correct the problem. Please contact the THQ Inc. ("THQ") Customer Service Department at (818) 880-0455 or on the web at <http://www.thq.com> before returning the Product to a retailer. Live Customer Service Representatives are available to help you Monday through Friday 9am to 5pm PST or you can use our automated systems by phone or on the web 24 hours a day, 7 days a week. Please do not send any Product to THQ without contacting us first. Your 5 digit Product Code is 38033. Please use this code to identify your Product when contacting us.

### Limited Warranty

THQ warrants to the last of THQ's ability to the original consumer purchaser of the Product that the medium on which the Product is recorded shall be free from defects in materials and workmanship for a period of ninety (90) days from the original date of purchase. The Product is sold "as is," without express or implied warranty of any kind, and THQ is not responsible for any losses or damages of any kind resulting from use of this Product. If a defect occurs during this ninety (90) day warranty period, THQ will either repair or replace, at THQ's option, the Product free of charge. In the event that the Product is no longer available THQ may, in its sole discretion, replace the Product with a Product of comparable value. The original purchaser is entitled to this warranty only if the date of purchase is registered at point of sale or the consumer can demonstrate, to THQ's satisfaction, that the product was purchased within the last ninety (90) days.

### To receive warranty service:

Notify the THQ Customer Service Department of the problem requiring warranty service by calling (818) 880-0455 or on the web <http://www.thq.com>. If the THQ service technician is unable to solve the problem by phone or on the web via e-mail, he will authorize you to return the Product, at your risk of damage, freight and insurance prepaid by you, together with your dated sales slip or similar proof-of-purchase within the ninety (90) day warranty period to:

THQ Inc.  
Customer Service Department  
23001 Agoura Road, Suite 270  
Calabasas Hills, CA 91301

THQ is not responsible for unauthorized returns of Product and reserves the right to send such unauthorized returns back to customers.

This warranty shall not be applicable and shall be void if: (a) the defect in the Product has arisen through abuse, unreasonable use, mistreatment or neglect; (b) the Product is used with products not sold or licensed by Nintendo or THQ (including but not limited to, non-licensed game enhancement and copier devices, adapters and power supplies); (c) the Product is used for commercial purposes (including rental); (d) the Product is modified or tampered with; (e) the Product's serial number has been altered, defaced or removed.

### Repairs after Expiration of Warranty

After the ninety (90) day warranty period, defective Product may be replaced in the United States and Canada for US\$25.00. The original purchaser is entitled to the replacement of defective Product for a fee, only if proof of purchase is provided to THQ. Make checks payable to THQ Inc. and return the product along with the original proof of purchase to the address listed above.

### Warranty Limitations

THIS WARRANTY IS IN LIEU OF ALL OTHER WARRANTIES AND REPRESENTATIONS. NO OTHER WARRANTIES OR REPRESENTATIONS OR CLAIMS OF ANY NATURE SHALL BE BINDING ON OR OBLIGATE THQ. ANY APPLICABLE IMPLIED WARRANTIES OR REPRESENTATIONS, INCLUDING WARRANTIES OF MERCHANTABILITY AND FITNESS FOR A PARTICULAR PURPOSE ARE HEREBY LIMITED TO NINETY (90) DAYS FROM THE DATE OF PURCHASE AND ARE SUBJECT TO THE CONDITION SET FORTH HEREIN. IN NO EVENT SHALL THQ BE LIABLE FOR CONSEQUENTIAL OR INCIDENTAL DAMAGES RESULTING FROM THE BREACH OF ANY EXPRESS OR IMPLIED WARRANTIES.

*The provisions of this warranty are valid in the United States only. Some states do not allow limitations on how long an implied warranty lasts or exclusion of consequential or incidental damages, so the above limitations and exclusions may not apply to you. This warranty gives you specific legal rights, and you may also have other rights, which may vary from state to state.*

### Warning

Copying of this Product or any of its contents or elements is illegal and is prohibited by United States and international copyright laws. Back-up or archival copies of this Product or any of its contents or elements are not authorized and are not necessary to protect your Product. United States and international copyright laws also protect this manual and other printed matter accompanying this Product. Violators will be prosecuted.