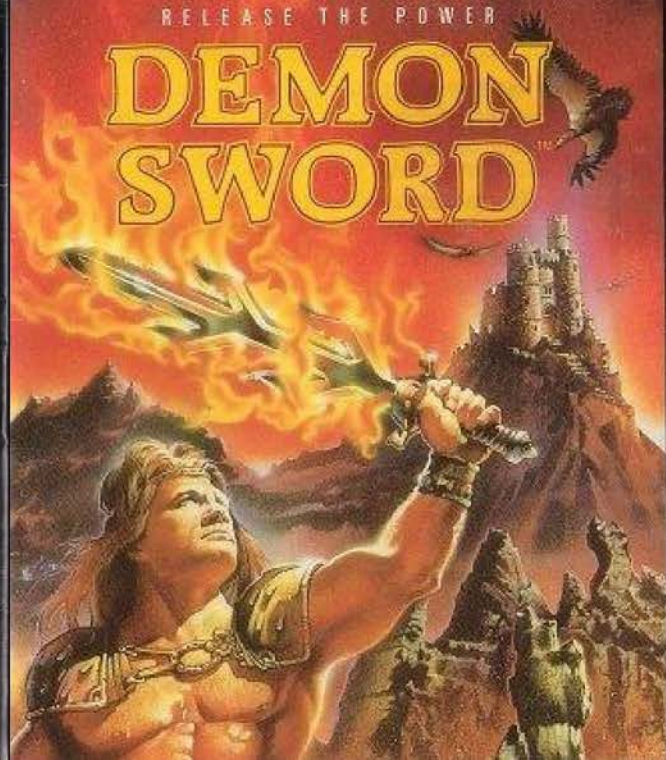


**TAITO™**  
THE ONLY GAME IN TOWN.™

Printed in Japan



NES-00-USA  
**HOW  
TO  
PLAY**

**TAITO™**

# TAITO™



This official seal is your assurance that Nintendo® has reviewed this product and that it has met our standards for excellence in workmanship, reliability and entertainment value. Always look for this seal when buying games and accessories to ensure complete compatibility with your Nintendo Entertainment System®

This game is licensed by Nintendo® for play on the



Nintendo® and Nintendo Entertainment System® are trademarks of Nintendo of America Inc.

## CARE OF YOUR GAME

- Always make sure the power is off when inserting or removing the game pak from your computer.
- This is a high precision game pak. Avoid subjecting it to extreme temperatures or shocks. Store at room temperature. Never attempt to dismantle it.
- Do not touch the terminal connectors or get them wet or the circuitry may be damaged. Never insert your fingers or any metal objects into the terminal leads.
- Use of thinners, solvents, benzene, alcohol and other cleaning agents can damage the game pak.

Taito® and Demon Sword™ are trademarks of Taito America Corp. Copyright © 1989.

## THANK YOU

for buying Demon Sword™ from Taito®.  
For the most fun, read this instruction manual thoroughly before you begin your journey.

The Story . . . . .	2
How to Operate . . . . .	3
How to Play . . . . .	4
Strength and Status . . . . .	5
Magic Items . . . . .	6
Special Magic . . . . .	8
The Realm of Demon Sword . . . . .	10
Password Option . . . . .	14
Hints and Tips . . . . .	15
Compliance with FCC Regulations . . . . .	16
Limited Warranty . . . . .	17

## THE STORY

Welcome to an epic saga of Good versus Evil, where a Dark Fiend rules an ancient world with cruel, terrifying magic. The land cries for a champion to end the eternal tyranny. From a small farming village in the High Hills comes a noble fighter called Victar. He carries the battered and rusted hilt of an old sword. The fables tell of how this sword once defeated the Dark Fiend. Victar must find the missing blades and overcome the Fiend's demon horde.

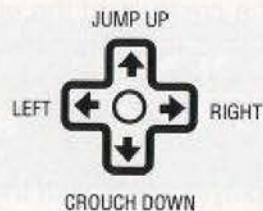
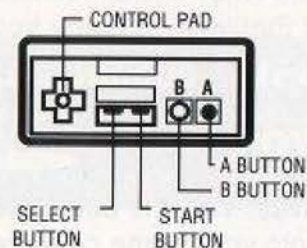
## HOW TO OPERATE

"A" Button

Swing Victar's sword.

"B" Button

Throw darts.



### Start Button

- Press the **START** button to begin the game.

### Pause Function

- Press the **START** button to pause the game
- Press the **START** button to resume play.



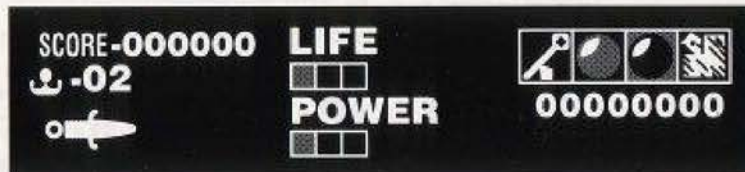
## HOW TO PLAY

**DEMON SWORD** consists of three worlds. Each world has two levels. A level is completed when Victor successfully defeats the creature at the end of that level. A blade from the Demon Sword is awarded when the player completes both levels in a world. The player will enter a seventh level if he completes all three worlds.

A player starts with three lives. Your life decreases if an enemy creature hits you or runs into you. Some creatures are more lethal than others. The game ends if the player indicator reaches zero. You can restore your energy level by collecting red spheres and extend this level by collecting black spheres.

## STRENGTH AND STATUS

Victor's energy levels and magic item inventories are displayed below the game screen.



## MAGIC ITEMS

There are two types of magic items that Victor can collect:

**REGULAR MAGIC:** These items appear on the screen when Victor defeats an enemy. Their effect happens automatically.

### KEYS

Opens the  
Mystic Gates.



### BLACK SPHERE

Adds one LIFE square.



### RED SPHERE

Restores one LIFE square



## MAGIC ITEMS (continued)

**REGULAR MAGIC:** (continued)

### PHOENIX

Rescues Victor if he  
falls into a bottomless pit.



### DART WHEEL

Victor can throw four  
darts for a short time.



### ARROW

Increases dart  
throwing speed.



### ARROW BEAM

Victor transforms into three  
invincible fighters for a short time.



## SPECIAL MAGIC

These items are only found when the player enters the Mystic Gates.

### FIRE SPHERES

Fire balls circle around Victor and protect him.



### LIGHTNING

Sheet lightning destroys all enemies on the screen.



### POWER BEAM

Direct waves of energy against tough opponents.



### POWER DART

Increases Victor's dart strength.



## SPECIAL MAGIC (continued)

### To select a magic item during game play:

Press the **START** button to pause the game.

Press the **UP ARROW** or **DOWN ARROW** keys to display the magic items.

Press the **LEFT ARROW** or **RIGHT ARROW** keys to select a magic item.

Press the **"A"** button to activate a magic item. It will now appear beside the regular magic item inventory.

Press the **START** button to resume play.

Press the **SELECT** button during game play to use the magic item.

## THE REALM OF DEMON SWORD

Prepare yourself for an adventure into uncharted lands, where sinister creatures and unworldly beings protect the Dark Fiend's dominion!

### WORLD ONE

#### The Bamboo Forest

Victar begins his journey in this land of tall trees, broken bridges, and bottomless canyons. The training grounds of the Demon Warrior are at the end of this level.

#### Cedar Mountain

A long stairway leads to thick forests and rocky gorges. The Old Wizard waits for Victar on a craggy escarpment.

## THE REALM OF DEMON SWORD (cont'd)

### WORLD TWO

#### The Temple Graveyard

Our hero must climb high walls and crumbling stairways to reach the temple where the Dark Priest dwells.

#### Fire Mountain

An evil land that's full of dead trees and fire pits. The Tower of the Troglodyte casts its shadow from the top of Fire Mountain.



### WORLD THREE

#### Bone Mountain

Unspeakable horror lies in the tunnels of Bone Mountain. The Skullkeeper lurks in his damp and musty lair.

#### The Castle

A maze of stairs leads Victar to the castle's tallest tower, where he must vanquish the elusive Harpee.

### The Final Battle

When all three blades of the **Demon Sword** are forged together, Victar must enter the **Brimstone Fortress**. Do you have the courage to descend into its depths? Here you will find the Fiend's chief servant, known to all as the Dark Lord.

### The Mystic Gates

The Mystic Gates can transport Victar to the Mystic Realm or the Dungeon Realm. The Mystic Realm sometimes gives Victar a gift. The only way to escape the Dungeon Realm is to fight the warrior that waits for Victar.



## PASSWORD OPTION

This game uses a password system on Controller 1 to let you continue the current game.

### To see the password at the end of the current game:

Press the **DOWN ARROW** key. Hold this key down and press the following buttons in this order: "B" "A" "B" "A"

Press the "A" button if you want to continue the game.

Press **SELECT** and then press the "A" button if you want to exit the game.

### To enter the password at the start of the game:

Press the **UP ARROW** key. Hold this key down and press the following buttons in this order: "A" "B" "A" "B"

Use the **UP/DOWN/LEFT/RIGHT ARROW** keys to move the pointer.

Press the "A" button to select a letter.

Press the "B" button to move backwards.

When the password is entered, move the pointer to the word **END** and press the "A" button. A correct password lets you continue.

## HINTS AND TIPS

- Save your magic items for the really tough enemies.
- Never stand in one place for too long.
- Tall trees offer a good defense against the demon hordes.
- Collect as many red spheres as you can before fighting the Dark Lord.
- The only way to escape from the dungeon gates is to defeat the warrior within.

## COMPLIANCE WITH FCC REGULATIONS

This equipment generates and uses radio frequency energy and if not installed and used properly, that is, in strict accordance with the manufacturer's instructions, may cause interference to radio and television reception. It has been type tested and found to comply with the limits for a Class B computing device in accordance with the specifications in Subpart J of Part 15 of FCC Rules, which are designed to provide reasonable protection against such interference in a residential installation. However, there is no guarantee that interference will not occur in a particular installation. If this equipment does cause interference to radio or television reception, which can be determined by turning the equipment off and on, the user is encouraged to try to correct the interference by one or more of the following measures:

- Reorient the receiving antenna
- Relocate the NES with respect to the receiver
- Move the NES away from the receiver
- Plug the NES into a different outlet so that the computer and receiver are on different circuits.

If necessary, the user should consult the dealer or an experienced radio or television technician for additional suggestions. The user may find the following booklet prepared by the Federal Communications Commission helpful: "How to Identify and Resolve Radio-TV Interference Problems." This booklet is available from the U.S. Government Printing Office, Washington, DC 20402, Stock No. 004-000-00345-4.

## TAITO SOFTWARE, INC. LIMITED WARRANTY

Taito Software, Inc. warrants to the original purchaser of this Taito product that this cartridge is free from defects in materials and workmanship for a period of ninety (90) days from the date of purchase. This Taito product is sold "as is", without expressed or implied warranty of any kind, and Taito is not liable for any losses or damages of any kind resulting from the use of this product. Taito agrees for a period of ninety (90) days to either repair or replace, at its option, free of charge, this Taito product. Send product postage paid, along with dated proof of purchase, to the address shown below.

This warranty shall not be applicable and shall be void if the defect in the Taito software product has arisen through abuse, unreasonable use, mistreatment or neglect. THIS WARRANTY IS IN LIEU OF ALL OTHER WARRANTIES AND NO OTHER REPRESENTATIONS OR CLAIMS OF ANY NATURE SHALL BE BINDING ON OR OBLIGATE TAITO. ANY IMPLIED WARRANTIES APPLICABLE TO THIS SOFTWARE PRODUCT, INCLUDING WARRANTIES OF MERCHANTABILITY AND FITNESS FOR A PARTICULAR PURPOSE, ARE LIMITED TO THE NINETY (90) DAY PERIOD DESCRIBED ABOVE. IN NO EVENT WILL TAITO BE LIABLE FOR ANY SPECIAL, INCIDENTAL, OR CONSEQUENTIAL DAMAGES RESULTING FROM POSSESSION, USE OR MALFUNCTION OF THIS TAITO SOFTWARE PRODUCT.

Some states do not allow limitations as to how long an implied warranty lasts and/or exclusions or limitations of incidental or consequential damages, so the above limitations and/or exclusions of liability may not apply to you. This warranty gives you specific rights, and you may also have other rights which vary from state to state.

11715 North Creek Pkwy South, Suite 110 • Bothell, WA 98011  
Tel: (804) 984-3344