

NEED HELP WITH INSTALLATION, MAINTENANCE,
OR SERVICE? CALL 1-800-355-3700.

W0179-USA

YOSHI!

Nintendo

Nintendo of America, Inc.
P.O. Box 231, Redmond, WA 98073-0231 U.S.A.

© 2001 Nintendo

INSTRUCTION BOOKLET

©

This official seal is your assurance that Nintendo has reviewed this product and that it has met our standards for excellence in workmanship, reliability and entertainment value. Always look for this seal when buying games and accessories to ensure complete compatibility with your Nintendo product.



All Nintendo products are licensed for sale for use only with other authorized products bearing the Official Nintendo Seal of Quality™.

⚠ WARNING ⚠

DO NOT USE WITH FRONT OR REAR PROJECTION TV

Do not use a front or rear projection television with your Nintendo Entertainment System™ (NES) and NES games. Your projection television screen may be permanently damaged if video games with stationary scenes or patterns are played on your projection television. Similar damage may occur if you place a video game on hold or pause. If you use your projection television with NES games, Nintendo will not be liable for any damage. This situation is not caused by a defect in the NES or NES games; other than the repetitive images may cause similar damage to a projection television. Please contact your TV manufacturer for further information.

READ BEFORE USING YOUR NES

A very small portion of the population may experience epileptic seizures when viewing certain kinds of flashing lights or patterns that are commonly present in our daily environment. These persons may experience seizures while watching some kinds of television pictures or playing certain video games. Players who have not had any previous seizures may nonetheless have an undiagnosed epileptic condition. We suggest that you consult your physician if you have an epileptic condition or if you experience any of the following symptoms while playing video games: altered vision, muscle twitching, other involuntary movements, loss of awareness of your surroundings, mental confusion, or convulsions.

Thank you for purchasing the Yoshi™ Game Pak for your Nintendo Entertainment System.†

Please read the instruction booklet carefully and follow the correct operating procedures. Keep the instruction booklet and the warranty safe for future reference.

CONTENTS

HATCH AND MATCH WITH YOSHI	4
HOW TO PLAY	5
LET'S START PLAYING	8
HOW TO PLAY SOLO (1-PLAYER GAME)	11
HOW TO PLAY AN OPPONENT (2-PLAYER GAME)	15

PRECAUTIONS

- 1) This is a high precision Game Pak. It should not be stored in places that are very hot or cold. Never let it or drop it. Do not take it apart.
- 2) Avoid touching the connectors. Do not get them wet or dirty. Doing so may damage the Game Pak and/or the Console Deck.
- 3) Do not clean with benzene, paint thinner, alcohol or other such solvents.
- 4) Store the Game Pak in its protective sleeve when not in use.
- 5) Always check the Game Pak edge connector for foreign material before inserting the Game Pak into the Console Deck.

Note: In the interest of product improvement, Nintendo Entertainment System specifications and design are subject to change without notice.

†This is a registered trademark of Nintendo of America Inc.
©1992 Nintendo of America Inc.



HATCH AND MATCH WITH YOSHI!



Yoshi is an action puzzle game starring Mario's dinosaur buddy Yoshi, and other familiar characters like Little Goomba and Blooper. Once again, Mario is going to have to battle away to save Yoshi, who is imprisoned in an egg. Match the egg shells to release Yoshi and score big points!



HOW TO PLAY



It takes fast finger work to make Mario shuffle the four trays and catch the can of characters falling from the top of the screen. There are six different characters, including Little Goomba, Boozer and Blue Boozy. You must match a falling character with another of the same type to make them both disappear. If the characters don't match up, they will start to stack on top of each other. If your stacks grow above the top line, the game will be over! Sometimes, Yoshi's egg will fall with the other characters. Watch up the top and bottom parts of Yoshi's egg and you will form an entire egg and clear away all the characters in between the lines. Yoshi will then hatch out of the egg, giving you bonus points.



Using the Controller

Use Controller [1] to play a 1-player game.

Use Controllers [1] and [2] to play a 2-player game.

Controller 1 / Controller 2



Control Pad

- ←] Moves Mario to the left.
-] Moves Mario to the right.
- ↑] Spends up the fall of dropping characters.
- When the Mario power is finished, the controls used to catch Yoshi.
- The controls used to catch Yoshi's egg in the level.

A and B Buttons

These buttons select the position of the traps that have set here.



SELECT Button

Press this button on the title screen to move the screen. This button is not used during the game.

START Button

- 1) Press this to start play.
- 2) Press this to pause play.
Press this button during the game to pause the action. Press this button again to return the game from where you left off.



LET'S START PLAYING



Correctly insert the cartridge into the Nintendo Entertainment System. Turn the power switch of the NES ON to display the Title screen.

Use either the D-Pad or the SELECT button to select a 1-player or 2-player game. Then press the START button to display the Menu screen.



Menu Screen

1-Player Game



Game Type

Level

Speed

Trap Type

GAME: Use this to select the type of game to be played.

A Type: In this game you attempt to score as many points as possible.

B Type: In this game you attempt to clear as many stages as possible.

LEVEL: Use this to select the level of difficulty of the game. The higher the number, the more difficult the game.

A Type: At higher difficulty levels, the characters will fall faster.

B Type: You start out with more characters already shot up at higher difficulty levels.

SPEED: Use this to select the speed at which the characters fall.

1 (S): The characters will fall slowly.

2 (M): The characters will fall quickly.

MUSIC: Use this to select the type of background music.

OFF: The music will be turned off.

2-Player Game

When playing a 2-player game, each player will have a separate LEVEL and SPEED menu. This allows you to set your own individual level and speed to give a better player a handicap.



After setting the Menu screen, press the START button to start play.

HOW TO PLAY SOLO

(1-Player Game)

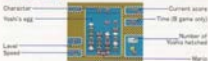
A TYPE

You can play the game until the characters stack up higher than the top line. As your score gets higher and you make more matches, the speed at which the characters fall increases. If you can get a character to land on one of its own legs, both will disappear and you will get 2 points. If you match and hatch Yoshi's egg, you'll get some points for for a super score!

B TYPE

You start the game with some characters already placed. Your goal is to clear all characters from your screen to advance to the next stage. With each stage, the number of characters you must clear increases!

GAME SCREEN



The Characters

There are 8 kinds of characters that fall.



Little Bird



Yoshi



Yoshi's egg



Koopa



Yoshi's egg



Yoshi's egg

Egg Matching Hint From Yoshi!

In the A Type game, the game level will increase after 40 characters have fallen. When the game advances to the next level, the falling speed of the characters will slow a little, but then it will gradually speed up again. Make it your aim to move as through the levels. Good luck!



How to Put the Egg Together

Pieces of Yoshi's egg shell are mixed in with the falling characters. If you can line up the upper and lower halves of the egg in the same column, you'll create a whole egg that will then hatch to reveal Yoshi.



If an upper shell half lands on one of Yoshi's traps, it will disappear.



If a lower shell half lands on one of Yoshi's traps, it will remain there. The egg starts characters on top of it or try to replace it by a top half.



If a lower shell half lands on top of another lower shell, both pieces will disappear.



If an upper shell half lands on top of a lower shell half, an egg will form and Yoshi will hatch from it.

If you combine some characters between an upper shell half and a lower shell half, you will get a bonus depending on how many characters you combine.



1 Yoshi
1 Egg
1 Yoshi
1 Yoshi
1 Yoshi



2 Yoshi
2 Egg
2 Yoshi
2 Yoshi
2 Yoshi



3 Yoshi
3 Egg
3 Yoshi
3 Yoshi
3 Yoshi



4 Yoshi
4 Egg
4 Yoshi
4 Yoshi
4 Yoshi



HOW TO PLAY AN OPPONENT (2-PLAYER GAME)



The players start the game at the same time. To win, you need to clear all the characters on your trap before your opponent does. You receive an egg each time you clear your screen. However, if your characters pile up over the trap line, you and your opponent will get an egg. The first person to receive 3 eggs wins the game.

GAME SCREEN



How to Attack in the Challenge Mode

You can send extra characters over to your opponent if you sandwich characters between upper and lower halves of Yoshi's egg. The number of characters you sandwich will fall as extra characters on your opponent's screen.

Your screen



The character you sandwich is sent to your opponent's screen.

Opponent's screen



The character increase is one. Three characters begin to fall.

Challenge Result Screen



Victory egg

The Battle Result screen will be displayed when the game ends.

