

# COLD WINTER™

# SCARFACE™

The Game  
COMING FALL 2005

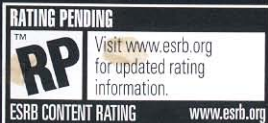
SCARFACEGAME.COM



EmuMovies



PlayStation 2



Scarface Interactive Game © 2005 Sierra Entertainment, Inc. Scarface is a trademark and copyright of Universal Studios. Licensed by Universal Studios Licensing LLLP. All Rights Reserved. Sierra and the Sierra logo are registered trademarks or trademarks of Sierra Entertainment, Inc. in the U.S. and/or other countries. All other trademarks are property of their respective owners. Parental Advisory: A Note to Parents: Scarface is rated R. Consult [www.filmratings.com](http://www.filmratings.com) for further information. The ratings icon is a registered trademark of the Entertainment Software Association. Licensed by Sony Computer Entertainment America for play on PlayStation 2 computer entertainment systems with the NTSC U/C designation only. "PlayStation" and the "PS" Family logo are registered trademarks of Sony Computer Entertainment Inc. Manufactured and printed in the U.S.A. THIS SOFTWARE IS COMPATIBLE WITH PLAYSTATION 2 CONSOLES WITH THE NTSC U/C DESIGNATION. U.S. AND FOREIGN PATENTS PENDING. 7215810





## WARNING: READ BEFORE USING YOUR PLAYSTATION®2 COMPUTER ENTERTAINMENT SYSTEM.

A very small percentage of individuals may experience epileptic seizures when exposed to certain light patterns or flashing lights. Exposure to certain patterns or backgrounds on a television screen or while playing video games, including games played on the PlayStation 2 console, may induce an epileptic seizure in these individuals. Certain conditions may induce previously undetected epileptic symptoms even in persons who have no history of prior seizures or epilepsy. If you, or anyone in your family, has an epileptic condition, consult your physician prior to playing. If you experience any of the following symptoms while playing a video game—dizziness, altered vision, eye or muscle twitches, loss of awareness, disorientation, any involuntary movement, or convulsions — IMMEDIATELY discontinue use and consult your physician before resuming play.

### WARNING TO OWNERS OF PROJECTION TELEVISIONS:

Do not connect your PlayStation 2 console to a projection TV without first consulting the user manual for your projection TV, unless it is of the LCD type. Otherwise, it may permanently damage your TV screen.

### USE OF UNAUTHORIZED PRODUCT:

The use of software or peripherals not authorized by Sony Computer Entertainment America may damage your console and/or invalidate your warranty. Only official or licensed peripherals should be used in the controller ports or memory card slots.

### HANDLING YOUR PLAYSTATION®2 FORMAT DISC:

- This disc is intended for use only with PlayStation 2 consoles with the NTSC U/C designation.
- Do not bend it, crush it or submerge it in liquids.
- Do not leave it in direct sunlight or near a radiator or other source of heat.
- Be sure to take an occasional rest break during extended play.
- Keep this compact disc clean. Always hold the disc by the edges and keep it in its protective case when not in use. Clean the disc with a lint-free, soft, dry cloth, wiping in straight lines from center to outer edge. Never use solvents or abrasive cleaners.

**GET INSIDE!  
Join Now!**

## Register Your Game Today

Free tips, tricks, demos, trailers, and more! Receive free technical and customer support. Be the first to know about beta tests, tournaments, game testing opportunities, and other events. Plus, stay informed on the latest VU Games news, updates, discounts & more!

Go to <http://reg.vugames.com> Now!

# COLDWINTER™

## Table of Contents

|   |    |
|---|----|
| Getting Started . . . . .                   | 2  |
| Starting Up . . . . .                       | 3  |
| Introduction . . . . .                      | 4  |
| Main Menu . . . . .                         | 4  |
| In-Game Pause Menu . . . . .                | 4  |
| HUD (Heads-Up Display) . . . . .            | 5  |
| Multiplayer . . . . .                       | 7  |
| Creating a Player Profile . . . . .         | 8  |
| Joining an Online Game . . . . .            | 8  |
| Creating (Hosting) an Online Game . . . . . | 9  |
| Credits . . . . .                           | 10 |
| Customer Support . . . . .                  | 11 |
| FAQ and Troubleshooting Guide . . . . .     | 12 |
| License Agreement . . . . .                 | 13 |

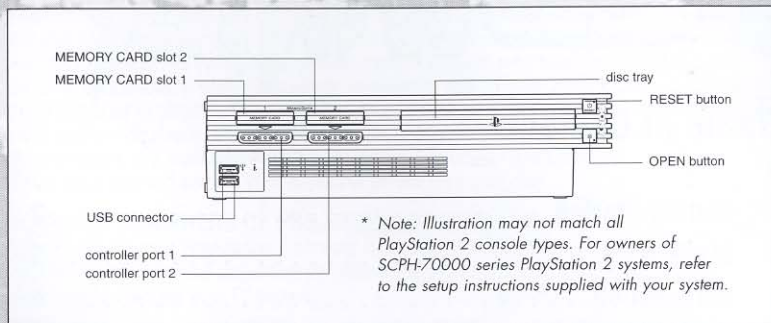


Copyright © 2005 Swordfish Studios Limited. All rights reserved. Cold Winter and the Swordfish Studios logo are trademarks of Swordfish Studios Limited. Sierra and the Sierra logo are registered trademarks or trademarks of Sierra Entertainment, Inc., in the U.S. and/or other countries. This product contains software technology licensed from GameSpy Industries, Inc. © 1999-2004 GameSpy Industries, Inc. All rights reserved. Development tools and related technology provided under license from Logitech. © 2001-2004 Logitech. RenderWare is a registered trademark of Canon Inc. Portions of this software are Copyright 1998-2002 Criterion Software Ltd. and its Licensors. The ratings icon is a registered trademark of the Entertainment Software Association. All other trademarks are property of their respective owners.



## Getting Started

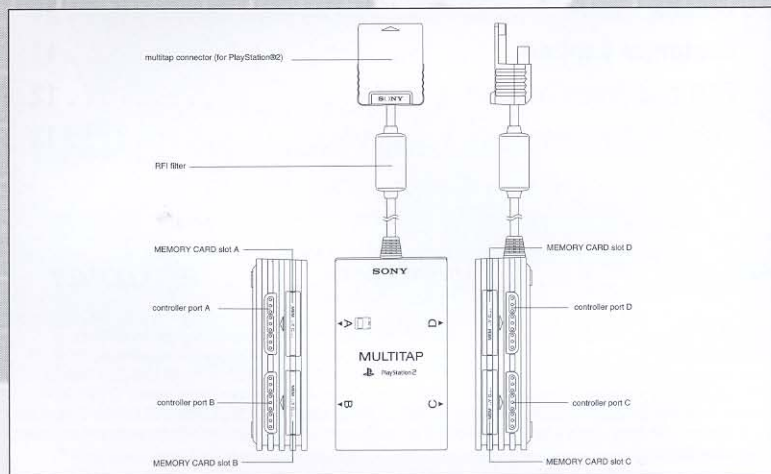
### Using the PlayStation®2 System



Set up your PlayStation®2 computer entertainment system according to the instructions in its Instruction Manual. Make sure the MAIN POWER switch (located on the back of the console) is turned ON. Press the RESET button. When the power indicator lights up, press the OPEN button and the display will open. Place the Cold Winter disc on the disc tray with the label side facing up. Press the OPEN button again and the disc tray will close. Attach game controllers and other peripherals, as appropriate. Follow on-screen instructions and refer to this manual for information on using the software.

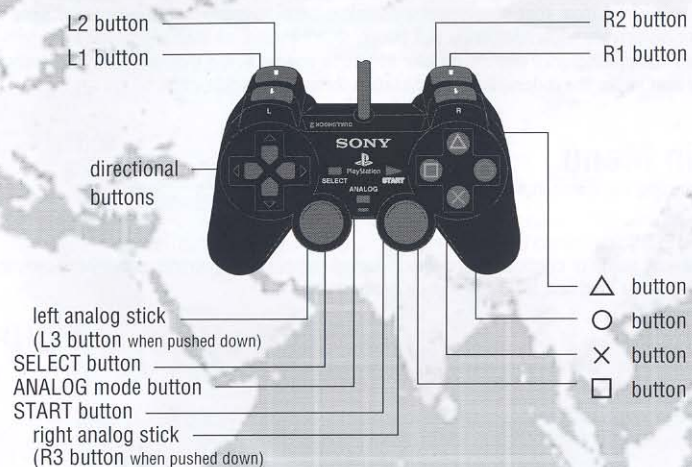
### Memory Card (8MB)(for PlayStation®2)

To save game settings and progress, insert a memory card (8MB)(for PlayStation®2) into MEMORY CARD slot 1 of your PlayStation®2 system. You can load saved game data from the same memory card or any memory card (8MB)(for PlayStation®2) containing previously saved games.



## Starting Up

### DUALSHOCK™2 ANALOG CONTROLLER CONFIGURATIONS





## Introduction

You are Andrew Sterling, British MI6 agent and an expert in the kind of covert operations the public doesn't believe proper governments engage in. Caught spying in China, you await execution. Your government denies all knowledge of your activities and has left you to die. However, a friend from your covert past arranges a daring escape and in return, asks you to work for his private security agency. But things aren't always as they seem. The lines between honor, allegiance and deceit blur as you're snared in the machinations of a secret society that seeks the redemption of civilization through its destruction.

## Main Menu

Upon starting the game, the Main Menu appears with the following options:

### Play Game

Begin a new game or continue a previously saved game. You can create new single-player profiles here or load one that has already been created.

### Edit Profile

Create or edit a multiplayer profile. Select your avatar, name and control preferences.

### Split-Screen

Create a split-screen Multiplayer game with up to four players.

### Online

Join or create a Multiplayer game. See more about Multiplayer on page 7.

### Options

Adjust your in game options, and save or load (profiles only), here.

## In-Game Pause Menu (START Button)

During single-player and multiplayer game play, pressing the START button will pause your game and display the following options:

### Settings

Adjust your playing preferences here.

### Save Game

Save your game. This will save your game at the last checkpoint.

### Quit to Main Menu

Quit the game and return to the Main Menu.

## In-Game Pause Menu (SELECT Button)

During single-player game play, pressing the SELECT button will pause your game and display the following options:

### Objectives

Displays all current outstanding and completed objectives.

### Help

Displays help.

### Intelligence

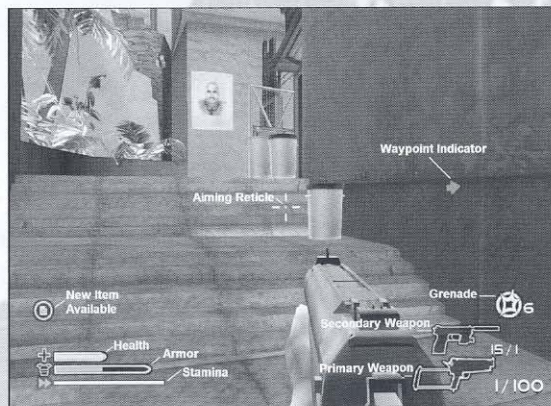
Displays all collected intelligence found within the current level.

### Combined Items

Displays all combined items available within the current level and component parts. For more on item combining, please see page 6.

## HUD (Heads-Up Display)

The HUD displays all pertinent in-game information onscreen.



### Aiming Reticle

The weapon crosshair is an aiming aid.

### New Item

Whenever you pick up a new item, such as intelligence or a combined item component, you will be informed here. Whenever you've gathered enough components to create an item, it will also appear here.



## Health

This indicates how many hit points you have. You can always use your medipack to heal (left directional button).

## Armor

This indicates how much armor you are wearing. Armor can be found throughout the level and be picked up off of dead enemies when searched.

## Stamina

This indicates how much stamina you have. Sprinting as well as picking up objects depletes your stamina. Stamina regenerates over time.

## Waypoint Indicator

The Waypoint Indicator directs you to the present primary objective. As you get closer, the arrow will change and indicate how many feet you are away from it.

## Grenade Inventory

This shows you what grenades you currently have equipped and ready for use. You can quickly scroll through your grenade inventory with Default Controls: Circle button.

## Secondary Weapon

This is your secondary weapon; you are carrying it but it is not equipped. You can carry only two weapons at a time. If you want to arm this weapon, press Default Controls right directional button. The available ammo is in the lower right.

## Primary Weapon

This is the weapon you are currently equipped with. The available ammo is in the lower right-hand corner.

## Combined Items

The player can see what combined items are available in a level by viewing the Recipe Cards in the in-game Pause Menu (SELECT button). When you acquire a new component part for each combined item, the empty slots will fill in. For example: To create a Molotov cocktail, you need a rag, a bottle, and a fuel can. In the menu at the beginning of a level the Molotov is found on, you will see the recipe card with the empty slot for each component part. As you acquire each part, the slots fill in. Once you have all the parts, the New Item Available Indicator on your HUD will flash. Access the menu to quickly assemble the combined item.

Note: Some of the same component parts can be used in different items. For example: Both Molotov Cocktails and Fire Bombs require fuel cans.

# Multiplayer

## Split-Screen

You can play with up to four of your friends in split-screen mode with the same options and game modes found online.

Note- multitap (for PlayStation®2) is required for split-screen games of more than two players.

## Online

With a network adapter (Ethernet/modem)(for PlayStation®2), a memory card (8MB)(for PlayStation®2) containing a valid Your Network Configuration file, and a broadband Internet connection (DSL, cable modem, or higher-speed), you can join and host online games. Use the Network Adaptor Start-Up Disc to create, edit and save a network configuration. Cold Winter is also compatible with the USB Headset (for PlayStation®2).

## Game Types

There are six different modes of multiplayer gameplay:

### *Deathmatch*

Only kills matter in this mode- the more the better.

### *King of the Hill*

Race against the other players to capture "the node." Five points are awarded for every time you successfully capture it. Kills aren't counted in this game.

### *Flag Tag*

Find the flag and hold onto it for as long as you can. It's too bad your hands are so busy carrying the flag because you can't shoot your opponents. Kills aren't counted in this game.

### *Domination*

Capture, defend and retain as many Objective Points in the level as possible. A point is awarded every five seconds for every point held.

### *Last Man Standing*

Cats have nine lives, but in this game, you've only got a set amount; and once they're gone, you're out. Outshoot and outlast your opponents to win.

### *Head Match*

Try to get ahead in this gruesome variation of Flag Tag.



## Creating a Player Profile

1. Select Edit Profile from the Main Menu OR Select Online from the Main Menu.
2. Using the directional buttons, select New Profile.
3. Name- To change your profile name, select Name by pressing the X button and use the directional buttons to use the keyboard that appears.
4. Player Model- You can alter your avatar's appearance.
5. Aim Assist- You can get a little help with your aiming skills with this feature.
6. Pitch- You can change the Look controls to Invert or Normal.
7. Controller Configuration- You can alter your controller configuration to any of the preset configurations here.

## Joining an Online Game

You can join an already-hosted game at any time.

1. Insert a memory card (8MB)(for PlayStation®2) containing a valid Your Network Configuration file into MEMORY CARD slot 1."
2. Select the Online option from the Main Menu.
3. Select or Create a Profile.
4. Accept the User License.
5. Select the Your Network Configuration file you would like to use.
6. In the Online Game Select Screen (Lobby), choose any listed game by highlighting it.
7. The game type and parameters are displayed in the lower portion of the screen. Press the X button to join.
8. If a game is Password Protected, you'll be required to know the password in order to join.
9. You will be taken to a secondary Lobby that lists all the players who have currently joined that particular game.
10. When the game is launched by the host, you will be prompted to Connect by pressing the X button to join.

## Creating (Hosting) an Online Game

You can host and play in a peer-to-peer online game. As the host, you select the game parameters of your choosing. For hosting, we recommend a higher broadband connection.

1. Press the X button to Create Game in the Online Game Select Screen (Lobby).
2. Password Protection- You may choose to set a password for your game. This allows only those who have the password to join.
3. Game Type Select- Choose what game mode you'd like to play.
4. Game Time Limit- Play with a limit of 5 to 120 minutes or none at all.
5. Game Points Limit- Play with a point limit of 10 to 500 or none at all.
6. Weapons Damage- Changes the amount of damage that weapons deliver.
7. Team Game- Changes any game into a team game.
8. Friendly Fire- Turns on and off friendly damage to your teammates.
9. Map Select- Allows you to choose between the 12 available maps.
10. Weapon Select- Customize the weapons found in the game or select predetermined setups of Balanced Loadout, Terrorist Weapons, Western Military, Light Pistols, Fully Automatic, Sniper Weapons, and Heavy Weapons.
11. Once the parameters are set, you're returned to the Hosting Lobby and are ready to go. Press the X button to launch your game.



## Credits

**Designed and Developed by**  
**Swordfish Studios, Birmingham, UK**

**Development Director**  
Julian Widdows

**Project Lead**  
Dave Percival

**Lead Programmer**  
Tim Austin

**Senior Programmers**  
Zafar Qamar  
Mike Stimpson

**Programmers**  
Mox  
Rich Carless  
Rob Wilson

**Additional Programming**  
Tom Hammersley  
Steve Williams

**Lead Artists**  
John Court  
Andy Taylor

**Senior Artists**  
Chris Rocks  
Gordon Theobald

**Artists**  
Justin Batchelor  
Dan Cook  
Matt Stephens  
Andy Stewart

**Animator**  
Tim Birks

**Senior Level Designer**  
Gav Cooper

**Level Designers/Scripters**  
Nick Hall  
Amanda Jeffrey  
Colin Nicholls

**Music and Audio**  
Mark Willot

**Lead Tester**  
Stuart Williams

**Testers**  
Stuart Clenton  
Gavin Clark

**John Grey Cinematics**  
Warren Ellis

With a big cheers to all the staff at Swordfish and everyone who's supported us, but especially: Trevor Williams (Managing Director), Lee Mather, Ade Williams, Kerry Dudley, Paul Finnegan, John Scolah, Bob Spour, Chris Lee, Jo Dray, Steve Thompson, Rob Watkins, Greg Whitfield, Rob Love, Rob Precious, Brett Butcher, Paul Topping, and all at Criterion, Mick Morris, Brian Mitchell, and all at Audiomotion, Tony Liviabella, Pat Hill and SN Systems, Toby and The Sound Company, all at Gamespy, Logitech, Andrea D'Orta and all at Creative Labs, Maria and P'nut, Carolyn, Deb & Alexander, Emily, Derek E, Derek & Beryl, The League of Gentlemen, Mike's Mum, Elaine R, Cheats & Tips, Neelam & Maariya, John & Sylvia, Barb, Gemma, Sarah, Michelle, Leah, Penny, Amanda and Joshua, Denise.

**Published by Vivendi Universal Games, Inc.**

### VIVENDI UNIVERSAL GAMES PRODUCTION

**Executive Producer/VP**  
Drew Markham

**Producer**  
Ian Stevens

**Associate Producer**  
Ellen Williams

**Executive Vice President of Worldwide Studios**  
Michael Pole

**Vice President**  
Kelly Ryan

**Chief Technical Director**  
Michael Heilemann

**Additional Production Support**  
Clark Wyatt, Tim Hall, Joe Selinske,  
Tom Gastall

### BRAND MARKETING

**President, North American Sales and Marketing**  
Philip O'Neil

**Group Vice President, Marketing**  
Ed Zobrist

**Vice President, Marketing**  
Koren Buckner

**Senior Brand Manager, Marketing**  
Lori Inman

**Associate Brand Manager, Marketing**  
Yoh Watanabe

**Brand Coordinator, Marketing**  
Kristin Bruno

### PUBLIC RELATIONS

**Director, Public Relations**  
Adam Kahn

**Associate PR Manager**  
Lisa Douet

### QUALITY ASSURANCE

**Project Lead**  
Linda Maier

**Testers**  
Alan Moore, Brandon Sanders, Carl Kevitz, Dwayne Zamora, Eric Hoffmaster, George Chen, James Pratt-Young, Jeff Montray, Jonathan Gomez, Jovan Colbert, Justin Cruz, Lazlo Szoke, Michael Robles, Nuria Andres, Zach Smith, Joe Ha, Ryan Stockstad, Hector Salavarrieta

**QA Manager**  
Igor Krynitskiy

**Senior QA Manager - Functionality**  
James Galloway

**Technical Requirements Group Supervisors**  
Ali Raza, Joaquin Meza, Joe Olivas

**Technical Requirements Group Testers**  
Fausto Lorenzano, Lauren Kamieniecki, Mark Jihanian, Robert Gardner, Ryan French, Tom Craven, William Bagnell

**Vivendi Universal Product Certification**  
Brandon Valdez, Cyra Talton, Glenn Dphrepaulezz, Richard Benavides

**Senior Manager-Technical Requirements Group**  
Chris Wilson

**Senior Manager - Resources**  
Michael Gonzales

**QA Supervisors**  
James Pasque, Chris Richardson

**VP of Studio Operations**  
Rich Robinson

### VIVENDI UNIVERSAL GAMES INTERNATIONAL

**President & COO**  
Jean-Francois Grollemund

**Marketing Director Games**  
Estelle Dubernard

**Senior Brand Manager**  
Antoine Molant

**Head of Communication**  
Simon Maflin

### LOCALIZATION TEAM

Gerry Carty, Barry Kehoe, Eithne Hagan, Kerrie Barbour

### VUG Special Thanks

Everyone at Swordfish Studios, Melissa Stevens and the Baked Beans - Poppa Loves You!, Glenn, Judy and Kelli, Chris Clark, Nathan Bosia, Gerald Martin, Tom Hitchcock, Stephen Wickes, Tom Keegan, Eric Weiss, Daniel Suarez, Michael Bannon, Peter Della Penna, Marcus Sanford, Anouchka Van Riel, Charles Yam, Rod Rigole, James Riordan, Kevin Crook, Pam Teller, Miriam Bishay, Eric Culqui, Suzan Rude, Cathy Truong, Anna Nakada, Bruce Hack

## Customer Support

**VU Games Customer Support can be reached in the following ways:**

### Technical Support

Phone: 800-630-0811  
6:00 AM EST to 6:00 PM EST

### Customer Service

Phone: 800-757-7707  
6:00 AM EST to 6:00 PM EST

Internet: <http://support.vugames.com>

### Mail

VU Games  
4247 South Minnewawa Avenue  
Fresno, CA 93725



# A FAQ and troubleshooting guide, including port range list

## Firewalls

In order to join or host a Cold Winter game from behind a router with NAT (Network Address Translation), or firewall, you may need to enable PORT FORWARDING. You will need to route, or forward, all data on port(s) UDP 3658, 13139, 51536-51549 and TCP 59515- 59524 to the IP address assigned to your PlayStation®2 console. (Note: Users using DHCP must ensure that their PlayStation®2 console is always assigned the IP address specified in the PORT FORWARDING setup; under these circumstances you may need to change your PlayStation®2 from "Auto Detect (DHCP)" to a "Static IP" address using the Network Configuration GUI or Network Adaptor Start-Up Disc to ensure that forwarded data always gets to your PlayStation®2console.)

If you are still having trouble connecting to other players, try bypassing the router or firewall by connecting your PlayStation®2 console directly to your DSL modem, cable modem, or other broadband device.

For further questions, please contact

Vivendi Universal Games Technical Service  
Support Department: Phone: 1-800-630-0811  
Internet: <http://support.vugames.com>.

## USB Headset trouble shooting information

During game play, if your USB headset is plugged into your PlayStation®2 console, and you are not able to chat with your opponent:

Your opponent may not have a USB headset connected to their PlayStation®2. Your opponent may be connecting to the Internet through a dial-up modem connection. You and your opponent may have a low quality connection to each other.

## LICENSE AGREEMENT

This software program, any printed materials, and any online or electronic documentation (the "Program") are the copyrighted work of VU Games, Inc., or its licensors. All use of the Program is governed by the terms of the End User License Agreement which is provided below ("License"). The Program is solely for use by end users according to the terms of the License Agreement. Any use, reproduction or redistribution of the Program not in accordance with the terms of the License Agreement is expressly prohibited.

### END USER LICENSE AGREEMENT

- Limited Use License.** VU Games, Inc. ("VUG") hereby grants, and by utilizing the Program you thereby accept, a limited, nonexclusive license and right to use one (1) copy of the Program for your use on a Sony PlayStation®2 computer entertainment system. The Program has a multi-player capability that allows users to utilize the Program over the Internet. Use of the Program over the Internet is subject to your acceptance of a Terms of Use Agreement. VUG, or its licensees, reserves the right to update, modify or change the Terms of Use Agreement at any time.
- Ownership.** All title, ownership rights and intellectual property rights in and to the Program and any and all copies thereof (including but not limited to any titles, computer code, themes, objects, characters, character names, stories, text, dialog, catch phrases, locations, concepts, artwork, animations, sounds, musical compositions, audiovisual effects, methods of operation, moral rights, any related documentation, and "plugins" incorporated into the Program) are owned by VUG or its licensors. The Program is protected by the copyright laws of the United States, international copyright treaties and conventions, and other laws. All rights are reserved. The Program may contain certain licensed materials, and VUG's licensors may act to protect their rights in the event of any violation of this Agreement.
- Responsibilities of End User.**
  - Subject to the Limited Use License as set forth above, you may not, in whole or in part, copy, photocopy, reproduce, translate, reverse engineer, derive source code from, modify, disassemble, decompile, or create derivative works based on the Program, or remove any proprietary notices or labels on the Program without the prior consent, in writing, of VUG.
  - You are entitled to use the Program for your own use, but you are not entitled to: sell, grant a security interest in or transfer reproductions of the Program to other parties in any way, nor to rent, lease or license the Program to others without the prior written consent of VUG; or exploit the Program or any of its parts for any commercial purpose.
  - You may not host or provide matchmaking services for the Program or emulate or redirect the communication protocols used by VUG in the on-line feature of the Program, through protocol emulation, tunneling, modifying or adding components to the Program, use of a utility program or any other techniques now known or hereafter developed, for any purpose, including, but not limited to, network play over the Internet, network play utilizing commercial or non-commercial gaming networks, or as part of content aggregation networks, without the prior written consent of VUG; and
  - You may not create or maintain, under any circumstance, more than one simultaneous connection to any hosting service utilized for on-line play. All such connections, whether created by the Program or by other tools and utilities, may only be made through methods and means expressly approved by VUG. Under no circumstances may you connect, or create tools that allow you to connect, to the hosting service's private binary interface or interfaces other than those explicitly provided by VUG for public use.
- Program Transfer.** You may permanently transfer all of your rights under this License, provided the recipient agrees to the terms of this License.
- DNAS.** This software uses "DNAS" (Dynamic Network Authentication System), a proprietary authentication system created by Sony Computer Entertainment Inc. ("SCEI"). "DNAS" retrieves information about a user's hardware and software for authentication, copy protection, account blocking, system, rules, or game management and other purposes. The information collected does not identify the user personally and will not be shared with any non-SCEI company. A PUBLISHER CAN COMBINE THIS INFORMATION WITH PERSONALLY IDENTIFYING INFORMATION FROM THE PUBLISHER'S RECORDS IF THE USER PROVIDES THE PERSONALLY IDENTIFYING INFORMATION. BEFORE PROVIDING ANY PERSONAL INFORMATION TO A PUBLISHER, PLEASE BE SURE TO REVIEW THE PUBLISHER'S PRIVACY POLICY AND TERMS AND CONDITIONS OF USE. DO NOT PROVIDE PERSONALLY IDENTIFYING INFORMATION TO A PUBLISHER UNLESS YOU ACCEPT THE CONDITIONS OF USE AND TERMS OF THEIR PRIVACY POLICY. SCEI, Sony Computer Entertainment America ("SCEA") and their affiliates cannot guarantee the continuous operation of the "DNAS" servers. SCEA shall not be liable for any delay or failure of the DNAS servers to perform. If you receive a message during login identifying a "DNAS" authentication error, please contact SCEA Consumer Services at 1-866-466-5333. For additional information concerning "DNAS", visit [www.us.playstation.com/DNAS](http://www.us.playstation.com/DNAS). In the event of a systems incompatibility or inoperability with DNAS, the sole liability of SCEI, SCEA and their affiliates shall be limited to the repair or replacement of the user's affected game software, console or peripherals at the option of SCEA. SCEA, its parents, affiliates, or licensed publishers shall not be liable for any delays, system failures, authentication failures, or system outages, whether may come from time to time, affect online game play or access thereto.
- Duration of the "On-Line" Component of the Program.** This Program contains an "on-line" component that allows you to utilize the Product over the Internet utilizing servers and software maintained by VUG and/or its affiliates. VUG may, in its sole discretion, provide the servers and software technology necessary to utilize the "on-line" component of the Program, or VUG may license to third parties the right to provide the servers and software technology necessary to utilize the "on-line" component of the Program. However, nothing contained herein shall be construed so as to place an obligation upon VUG to provide the servers and software technology necessary to utilize the "on-line" component before the time that the Program is Out of Publication. The term "Out of Publication" as used herein shall mean that the Program is no longer being manufactured by VUG.
- Termination.** This License is effective until terminated. You may terminate the License at any time by destroying the Program. VUG may, at its discretion, terminate this License in the event that you fail to comply with the terms and conditions contained herein. In such event, you must immediately destroy the Program.
- Limited Warranty.** VUG EXPRESSLY DISCLAIMS ANY WARRANTY FOR THE PROGRAM AND MANUAL(S). THE PROGRAM AND MANUAL(S) ARE PROVIDED "AS IS" WITHOUT WARRANTY OF ANY KIND, EITHER EXPRESS OR IMPLIED, INCLUDING, WITHOUT LIMITATION, THE IMPLIED WARRANTIES OF MERCHANTABILITY, FITNESS FOR A PARTICULAR PURPOSE, OR NONINFRINGEMENT. ANY WARRANTY AGAINST INFRINGEMENT THAT MAY BE PROVIDED IN SECTION 2-312(3) OF THE UNIFORM COMMERCIAL CODE AND/OR IN ANY OTHER COMPARABLE STATE STATUTE IS EXPRESSLY DISCLAIMED. The entire risk arising out of use or performance of the Program remains with you; however, VUG warrants the disc(s), on which the Program is furnished, to be free from defects in materials and workmanship, under normal use, for a period of ninety (90) days from the date of delivery. VUG's sole liability in the event of a defective disc shall be to give you a replacement disc. Some states do not allow the exclusion or limitation of incidental or consequential damages, or allow limitations on how long an implied warranty lasts, so the above limitations may not apply.
- Limitation of Liability.** NEITHER VUG, ITS PARENT, SUBSIDIARIES, AFFILIATES NOR LICENSORS SHALL BE LIABLE IN ANY WAY FOR LOSS OR DAMAGE OF ANY KIND RESULTING FROM THE USE OF THE PROGRAM INCLUDING, BUT NOT LIMITED TO, LOSS OF GOODWILL, WORK STOPPAGE, COMPUTER FAILURE OR MALFUNCTION, OR ANY AND ALL OTHER COMMERCIAL DAMAGES OR LOSSES. Some states do not allow the exclusion or limitation of incidental or consequential damages, or allow limitations on how long an implied warranty lasts, so the above limitations may not apply to you.
- Equitable Remedies.** You hereby agree that VUG would be irreparably damaged if the terms of this License were not specifically enforced, and therefore you agree that VUG shall be entitled, without bond, other security, or proof of damages, to appropriate equitable remedies with respect to breaches of this License, in addition to such other remedies as VUG may otherwise have available to it under applicable laws. In the event any litigation is brought by either party in connection with this License Agreement, the prevailing party in such litigation shall be entitled to recover from the other party all the costs, attorneys' fees and other expenses incurred by such prevailing party in the litigation.
- Miscellaneous.** This License shall be deemed to have been made and executed in the State of California, and any dispute arising hereunder shall be resolved in accordance with the law of the State of California. This License may be amended only by an instrument in writing executed by both parties. This License constitutes and contains the entire agreement between the parties with respect to the subject matter hereof and supersedes any prior oral or written agreements.

RSA BSAFE® SSL-C and Crypto-C software from RSA Security Inc. have been installed. RSA is a registered trademark of RSA Security Inc. BSAFE is a registered trademark of RSA Security Inc. in the United States and other countries. RSA Security Inc. All rights reserved.

This software uses "DNAS" (Dynamic Network Authentication System), a proprietary authentication system created by Sony Computer Entertainment Inc. to provide security and to help protect copyrighted content. The unauthorized transfer, exhibition, export, import or transmission of programs and devices circumventing its authentication scheme may be prohibited by law. For additional information, see [www.us.playstation.com/DNAS](http://www.us.playstation.com/DNAS).