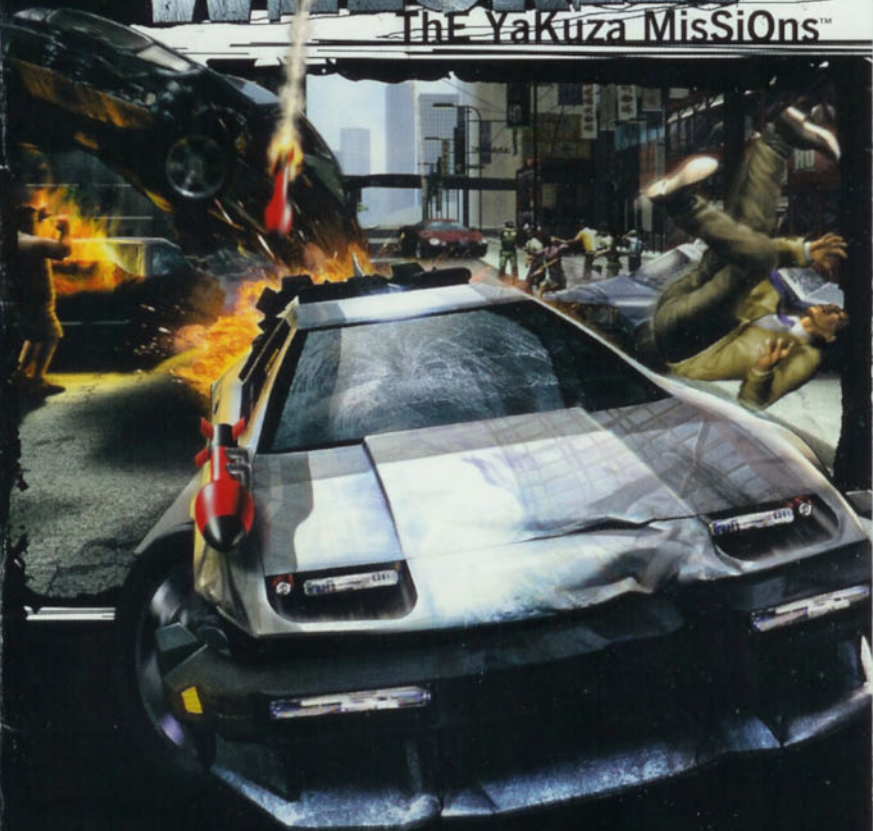


WIRECKLESS

The Yakuza MisSiOns™



EmuMovies

ACTIVISION.

WARNING: READ BEFORE USING YOUR PLAYSTATION®2 COMPUTER ENTERTAINMENT SYSTEM.

A very small percentage of individuals may experience epileptic seizures when exposed to certain light patterns or flashing lights. Exposure to certain patterns or backgrounds on a television screen or while playing video games, including games played on the PlayStation®2 console, may induce an epileptic seizure in these individuals. Certain conditions may induce previously undetected epileptic symptoms even in persons who have no history of prior seizures or epilepsy. If you, or anyone in your family, has an epileptic condition, consult your physician prior to playing. If you experience any of the following symptoms while playing a video game – dizziness, altered vision, eye or muscle twitches, loss of awareness, disorientation, any involuntary movement, or convulsions – IMMEDIATELY discontinue use and consult your physician before resuming play.

WARNING TO OWNERS OF PROJECTION TELEVISIONS:

Do not connect your PlayStation®2 console to a projection TV without first consulting the user manual for your projection TV, unless it is of the LCD type. Otherwise, it may permanently damage your TV screen.

USE OF UNAUTHORIZED PRODUCT:

The use of software or peripherals not authorized by Sony Computer Entertainment America may damage your console and/or invalidate your warranty. Only official or licensed peripherals should be used in the controller ports or memory card slots.

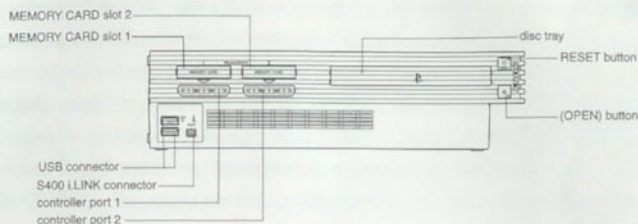
HANDLING YOUR PLAYSTATION 2 FORMAT DISC:

- This disc is intended for use only with PlayStation®2 consoles with the NTSC U/C designation.
- Do not bend it, crush it or submerge it in liquids.
- Do not leave it in direct sunlight or near a radiator or other source of heat.
- Be sure to take an occasional rest break during extended play.
- Keep this compact disc clean. Always hold the disc by the edges and keep it in its protective case when not in use. Clean the disc with a lint-free, soft, dry cloth, wiping in straight lines from center to outer edge. Never use solvents or abrasive cleaners.

CONTENTS

Getting Started	2
Starting Up	3
Game Controls	4
Quick Start	4
Welcome to Hong Kong	5
How to Play	5
The Game Screen	6
Bonus Missions, Cheats and Cars	7
Sub-Missions	7
Bonus Missions	7
Cheats	8
Cars	8
Two Player	8
Options	9
Load Game	9
Save Game	9
Replay	9
Music Volume	9
SFX Volume	9
Vibration	9
Hints and Tips	10
Credits	11
Customer Support	13
Software License Agreement	17

GETTING STARTED



Set up your PlayStation®2 computer entertainment system according to the instructions in its Instruction Manual. Make sure the MAIN POWER switch (located on the back of the console) is turned on. Press the **RESET** button. When the power indicator lights up, press the **Open** button and the disc tray will open. Place the WRECKLESS™ disc on the disc tray with the label side facing up. Press the **Open** button again and the disc tray will close. Attach game controllers and other peripherals, as appropriate. Follow on-screen instructions and refer to this manual for information on using the software.

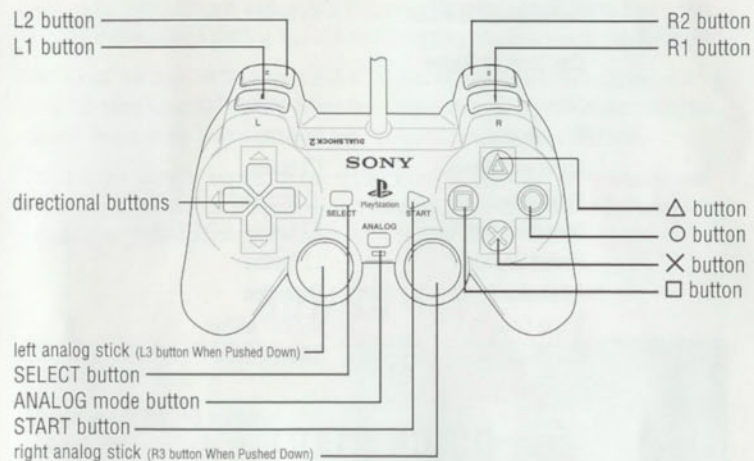
Memory Card

WRECKLESS™ requires a memory card (8MB) (for PlayStation®2) to save your game. A saved game's data takes up 187 KB. You can obtain a memory card through the retailer where you purchased your PlayStation®2 game console or this game.

To access your memory card, insert your memory card into MEMORY CARD slot 1.

STARTING UP

DUALSHOCK®2 analog controller CONFIGURATIONS



Controller Settings

The vibration function can be adjusted by selecting **VIBRATION** from the Options menu (see page 9) regardless of whether the mode indicator on the controller is ON or OFF.

GAME CONTROLS

Menus and Settings

Select Menu Option:	directional buttons
Accept Menu Selection:	× button or START button
Cancel Menu Selection:	△ button

Car and In Game

Steer:	left analog stick
Accelerate:	× button
Brake and Reverse:	□ button
Handbrake:	△ button
Powerslide/180 turn :	□ button + × button
Rocket Launch :	L1 button
Adrenaline Boost :	R1 button
Toggle Camera View:	SELECT button
Pause Game:	START button

QUICK START

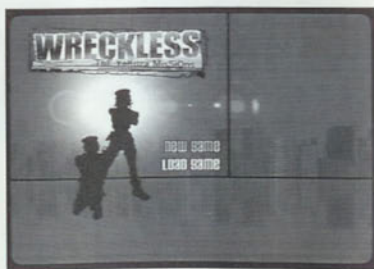
I know, I know... you coughed up your cash and you don't want to read the manual, you just want to get in the car and start tearing up the streets. We can't blame you.

So here's the fastest way onto the streets of Hong Kong.

Assuming you've already got the game loaded, you'll see the title screen.

Follow these steps:

1. Choose **New Game**.
2. On the Scenario Select screen, choose either **Dragon Adventure** or **Spy Story**.
3. Select the appropriate **Mission** and **Difficulty Level**.
4. Select your **Vehicle**. Note: To select an option, use the × button. To cancel, use the △ button.



WELCOME TO HONG KONG

Welcome to Hong Kong. Mystery and intrigue; money and power; East and West: Hong Kong has it all. Being one of the most prominent cities in all of Asia, and not without reason, this island country is just bustling with energy and vitality. Stroll along Victoria Harbour or take a refreshing ride on the enchanting above-ground street cars and really soak up the sights, sounds and attitude that make Hong Kong stand alone. Feel a little hungry? Try the mango pudding and dim sum; they may convince you to stay for good!

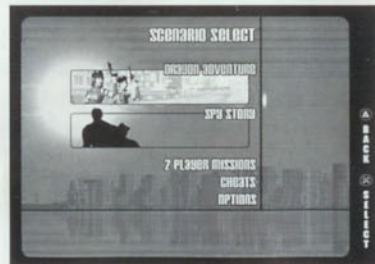
The Yakuza are loose on the streets and out of control. The good honest citizens of Hong Kong are being terrorized and the police department seems incapable of controlling the Yakuza. Public safety is at an all-time low. **SOMEONE** needs to do **SOMETHING!**

You're on the scene to answer the call of the city and stop the madness! Take the role of the elite police unit the **Dragons** or as a couple of **Spies** hired to beat the Yakuza and to take down Tiger Takagi—the head of the Hong Kong Yakuza.

HOW TO PLAY

Put simply, get in a vehicle and FLOOR IT!

Choose one of the two scenarios and pick one of the available missions. Each mission objective is explained before you go on to pick your vehicle. Before some of the missions, you'll see a short scene explaining the situation. Then, as the mission starts, you'll be given instructions about what needs to be accomplished. Complete each main objective successfully and you'll move on to the next set of missions.

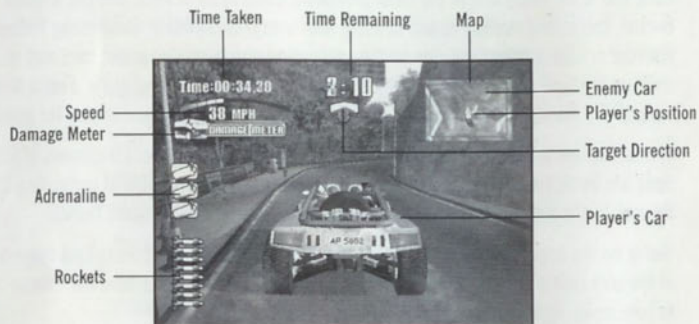


Vehicle Selection

Once you've selected a mission, you get to choose which vehicle you'd like to trash, I mean use. Use the **directional buttons** to choose the vehicle and then press the × button to select it. To begin with, each of the scenarios has three different vehicles, more vehicles will unlock as you complete missions. But beware, not all vehicles are suitable for all missions.



THE GAME SCREEN



Time Remaining: Finish the level before this counter reaches zero.

Map: Shows the area around your car. The yellow arrow in the center of the map indicates your car and the direction you're travelling. The red dots show the enemy cars. As you approach an enemy or target area, the map will zoom in. Remember, there is more than one way to get from point A to point B, and time is precious.

Player's Car: Your car, amusingly enough.

Enemy Car: One of the many enemy cars that need to be taken out.

Speed: Shows your current speed.

Time Taken: The time taken so far on this mission.

Target Direction: Shows the direction of the enemy or goal.

Note: This shows the direct route (as the crow flies). It will NOT guide you around the streets.

Damage Meter: Objective's remaining energy.

Rockets: Shows how many rockets you have left.

Adrenaline: Shows your number of remaining adrenaline boosts.

BONUS MISSIONS, CHEATS AND CARS

Sub-Missions

As well as the main objective, each mission has a smaller sub-mission. These are small tasks that can be completed as you try to finish your main objectives. Completing the sub-missions successfully will help you unlock the extra features that are locked when you first begin to play.

Failing to complete a sub-mission will NOT hinder your progress through the main game, so don't worry!

Before you play each mission, pay careful attention to see what the current **SUB-MISSION** is, you will see the description written below the main mission description.



At the end of the mission you will be given a **GOLD**, **SILVER** or **BRONZE** award.

GOLD: Achieved by completing both the **MISSION** and **SUB-MISSION** fully.

SILVER: Achieved by completing the **MISSION** and doing well at **SUB-MISSION**.

BRONZE: Achieved by only completing the **MISSION**.

A medal on the Your Missions screen will show how you have scored for each mission.

Bonus Missions

Lucky old you. Not only do you have 20 missions in which to cause maximum chaos, we have also included 20 bonus missions guaranteed to produce even more mayhem! Each mission has its own bonus mission which, once unlocked, can be completed at anytime. To select a bonus mission, go to your scenario of choice and highlight a bonus mission from the Your Missions screen. The objectives of each bonus are explained on this screen. The further you progress in the game, the more bonus missions you'll unlock. The more bonuses you complete, the greater the number of cheats you can activate. Well...What are you waiting for?

Cheats

More mayhem? Surely not. These cheats enhance and alter your gameplay experience.

Use the Game Cheats screen to activate your desired cheat. The cheat will be active on the next missions you play. If you want to disable cheats or change your selection, come back to this menu.



Cars

Extra vehicular mayhem! There are 19 extra BONUS CARS for you to unlock. Once activated, they can be selected on the Choose Your Vehicle screen and used for just about any mission! Unlocking them is easy, highlight the car and read the details. Don't forget to save, or your extra vehicles will be lost.

TWO PLAYER

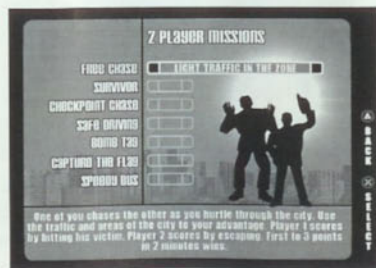
This is not your ordinary split screen mode, it's a whole new way of playing two player driving games. The major and obvious difference is that **BOTH** players are on the same screen at all times. Try it and see.

During the game, one player will control the "chasing" car. This is the car closest to the camera, and will look the largest. Generally this will be **PLAYER 1**.

The other player will control the car being "chased." This is the car slightly further away from the camera and slightly smaller. Generally this is **PLAYER 2**.

Some more advanced two player missions have the chasing roles reversed as you play!!!

There are seven different two player games to choose from. Once you have chosen the style of game, then choose from four different starting locations each with different traffic levels. Then both players can choose their cars.



OPTIONS

This menu gives you access to the load and save areas, as well as the game settings and Replay.

Load Game

From here you can load a previously saved game without returning to the title screen. To load a game, follow the on-screen prompts. Once loaded, you will return to the Options menu.

Save Game

As well as saving at the end of the mission, you can save from this menu. Saving will store your current game status that includes:

- Mission progress.
- Unlocked vehicles.
- Unlocked and selected cheats.
- Current replay for the last mission that was played.
- All audio options.

Use the on-screen prompts to guide you through the saving process.

Replay

Use this option to view your latest and greatest moments.

Music Volume

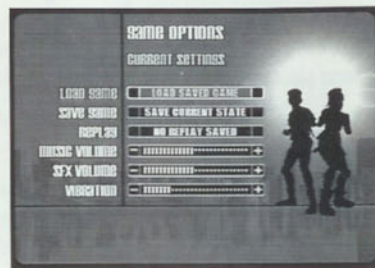
Use this to adjust the level of the music.

SFX Volume

Use this to adjust the level of the sound effects.

Vibration

This option sets the level of vibration.



HINTS AND TIPS

Not that you'll need any help...

The right car for the job: If you're having trouble, try changing your car. Some cars accelerate better, some are more maneuverable, some are smaller to squeeze through traffic, some are heavier and less affected by collisions, some are simply too big to fit in some places. It's up to you to choose the right vehicle for the job!

Use the map and the arrow: These will often show important information to help you complete your mission.

Use rockets, but carefully: Rockets are very powerful. They are good at taking out long range targets, but they take time to master. They're pretty useful at close range too, and for clearing obstructive vehicles off the road!!

Get your adrenaline pumping: Use adrenaline boost in the busiest and tightest spots. It gives you heightened reactions to respond to the situation.

Shortcuts: The shortest route between A and B is a straight line, so take it! You'll never get ahead by only taking the easy way out. Use your keen wits and good sense of direction to find better routes through the city.

Environment: Be sure you use the environment to its full advantage. This means if you have to drive on the sidewalk, through parks, or over buildings, please do. You have a license to be reckless and also a job to do!

Taking 'Em Out: I'm not talking about lunch or dinner. Ram them off the road! Rear-end them at high speeds, smash into their sides, push them into oncoming traffic, or take them head-on! Any way you cut it, you gotta TAKE 'EM OUT!

Cheat: If at first you don't succeed, CHEAT! Unlocking the cheats will not only allow you to create more carnage on the streets of Hong Kong, but will also help in your missions. So don't forget to use cheats, you've earned them.

Note: Not all cheats can be used in the two player modes.

Negotiating the busy traffic: Especially on HARD setting, try to avoid the hotspots where you know traffic is busy, and of course...drive on the sidewalk !!!

CREDITS

Activision Studios

Head of Studio/
Producer/Programming
Tom Heath

Senior Programmers

Stephen Harding
Gary Vine

Programming

Simon Franco
Norman Liu

Art Director

Jason Millson

Graphic Artists

Ed Niblett
Kevin Wafer
David Pinkney
Doug McPherson
Colin Wren

Associate Producer

Daniel Rose

Additional Production

Juan Valdes
Julie Man

VP, European Studios

Julian Lynn-Evans

EVP, Worldwide Studios

Larry Goldberg

Studio Japan

Takehisa Abe
David Grijns
Austin Keys
Tad Horie
Jeff Matsushita

Special Thanks

Jenny Heath
Ko-Shuey Harding
Jackie Millson
Debbie Pickering
Mona Franco
Claire Burt
Becky Whitgrove
Koon Sang Liu

Activision US

Business Affairs
Phil Terzian
Michael Hand
David Kay

EVP, Global Brand Management
Kathy Vrabeck

VP, Global Brand Management
Will Kassoy

Global Brand Manager
Rachel Silverstein

Associate Brand Manager
Byron Beede

VP, Corp. Communications
Maryanne Lataif

Sr. Publicist, Corp. Communications
Lisa Fields

Jr. Publicist, Corp. Communications
Maclean Marshall

Creative Services

VP, Creative Services
Denise Walsh

Director, Creative Services
Matthew Stainer

Manager, Creative Services
Jill Barry

Activision UK

Senior VP, European Publishing
Scott Dodkins

Director of Strategic Marketing Europe
Roger Walkden

Marketing Manager
Carolyn London

Assistant Brand Manager
Nerys Lukes

PR Manager ROE
Suzanne Panter

PR Administrator
Vicky Cayzer

Head of Publishing Services
Natalie Ranson

Localization Project Manager
Tamsin Lucas

Creative Services Manager
Jackie Sutton

Publishing Services Assistant
Trevor Burrows

Packaging Design
Ignited Minds, LLC

Manual Design & Layout
Ignited Minds, LLC

Quality Assurance

Project Lead
Chad Fazzaro

Senior Project Lead
Adam Hartsfield

QA Manager, Console Testing
Joe Favazza

Floor Leads
Frank So
Steve Peñate

Testers

Elvir Caranay
Hubert Cheng
Allen Chiu
Paul Colbert
Alex Cortez
Trent Deike
Michael DeMarti
Joshua Feinman
David Hansen
John Macmillan
Chad Makings
Monster Middleton
Garrett Oshiro
John Phu
Kenneth J. Ruiz
Mike Wale
Terik Keller-Walker

QA Special Thanks

Jim Summers
Jason Wong
Tim Vanlaw
Nadine Theuzillot
Marilena Rixford
Ed Clune
Ben DeGuzman
Indra Gunawan
Marco Scataglini
Todd Komesu
Willie Bolton
Chad Siedhoff
Jennifer Vitiello
Jeremy Gage
Nick Favazza
John Hong

Customer Support

CS Manager
Bob McPherson

CS Escalation and Information Lead
Rob Lim

CS Phone Lead
Gary Bolduc

CS E-Mail Lead
Mike Hill

Game Engine by Travellers Tales, Knutsford, UK

Special Thanks

Jon Burton
Steve Monks
Dave Dootson
Leon Warren
Alister Crowe
Glynn Scragg

CUSTOMER SUPPORT

NOTE: Please do not contact Customer Support for hints/codes/cheats; only technical issues.

Internet/E-mail: <http://www.activision.com/support>

Our support section of the web has the most up-to-date information available. We update the support pages daily so please check here first for solutions. If you cannot find an answer to your issue you can email us using the support form. A response may take anywhere from 24-72 hours depending on the volume of messages we receive and the nature of your problem.

NOTE: Internet/e-mail support is handled in English only.

Phone: (310) 255-2050

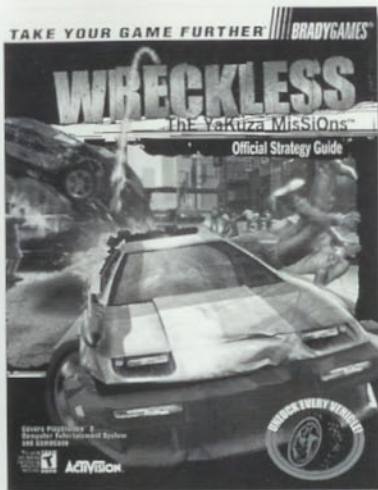
You can call our 24-hour voice-mail system for answers to our most frequently asked questions at the above number. Contact a Customer Support representative at the same number between the hours of 9:00 am and 5:00 pm (Pacific Time), Monday through Friday, except holidays.

Please do not send any game returns directly to Activision without first contacting Customer Support. It is our policy that game returns/refunds must be dealt with by the retailer or online site where you purchased the product. Please see the Limited Warranty contained within our Software License Agreement for warranty replacements.

NOTES

NOTES

RIP UP THE STREETS...



the Official Strategy Guide from BradyGames shows you how!

- Expert Mission Strategy.
- Hard-To-Find Shortcuts.
- Extremely Detailed City Maps.
- Bonus Missions Revealed!
- Tips to Unlock Every Vehicle!



To purchase the BradyGames' *WRECKLESS: The Yakuza Missions™ Official Strategy Guide*, visit your local electronics, book, or software retailer. Also available online at bradygames.com.

ISBN: 0-7440-0192-7

UPC: 7-52073-00192-6

PRICE: \$14.99 US / \$21.99 CAN / £9.99 Net UK

ACTIVISION

BRADYGAMES
TAKE YOUR GAME FURTHER

©2001-2002 Bunkasha Publishing Co., Ltd. Portions ©2002 Activision Publishing, Inc. Game Engine ©2002 Traveller's Tales. Published and distributed by Activision Publishing, Inc. Activision is a registered trademark, and Wreckless and Wreckless: The Yakuza Missions are trademarks of Activision, Inc. and its affiliates. All rights reserved. The ratings icon is a trademark of the Interactive Digital Software Association. All other trademarks and trade names are the property of their respective owners.

Software License Agreement

USE OF THIS PROGRAM IS SUBJECT TO THE SOFTWARE LICENSE TERMS SET FORTH BELOW. "PROGRAM" INCLUDES THE SOFTWARE INCLUDED WITH THIS AGREEMENT, THE ASSOCIATED MEDIA, ANY PRINTED MATERIALS, AND ANY ON-LINE OR ELECTRONIC DOCUMENTATION, AND ANY AND ALL COPIES AND DERIVATIVE WORKS OF SUCH SOFTWARE AND MATERIALS. BY OPENING THIS PACKAGE, AND/OR USING THE PROGRAM, YOU ACCEPT THE TERMS OF THIS LICENSE WITH ACTIVISION, INC. ("ACTIVISION").

LIMITED USE LICENSE. Activision grants you the non-exclusive, non-transferable, limited right and license to use one copy of this Program solely and exclusively for your personal use. All rights not specifically granted under this Agreement are reserved by Activision. This Program is licensed, not sold. Your license confers no title or ownership in this Program and should not be construed as a sale of any rights in this Program.

OWNERSHIP. All title, ownership rights and intellectual property rights in and to this Program and any and all copies thereof (including but not limited to any files, computer code, themes, objects, characters, character names, stories, dialog, catch phrases, locations, concepts, artwork, animation, sounds, musical compositions, audio-visual effects, methods of operation, moral rights, and any related documentation, incorporated into this Program) are owned by Activision or its licensors. This Program is protected by the copyright laws of the United States, international copyright treaties and conventions and other laws. This Program contains certain licensed materials and Activision's licensors may protect their rights in the event of any violation of this Agreement.

YOU SHALL NOT:

- Exploit this Program or any of its parts commercially, including but not limited to use at a cyber cafe, computer gaming center or any other location-based site. Activision may offer a separate Site License Agreement to permit you to make this Program available for commercial use; see the contact information below.
- Sell, rent, lease, license, distribute or otherwise transfer this Program, or any copies of this Program, without the express prior written consent of Activision.
- Reverse engineer, derive source code, modify, decompile, disassemble, or create derivative works of this Program, in whole or in part.
- Remove, disable or circumvent any proprietary notices or labels contained on or within the Program.
- Export or re-export this Program or any copy or adaptation in violation of any applicable laws or regulations.

LIMITED WARRANTY. Activision warrants to the original consumer purchaser of this Program that the recording medium on which the Program is recorded will be free from defects in material and workmanship for 90 days from the date of purchase. If the recording medium is found Any implied warranties prescribed by statute are expressly limited to the 90-day period described above.

EXCEPT AS SET FORTH ABOVE, THIS WARRANTY IS IN LIEU OF ALL OTHER WARRANTIES, WHETHER ORAL OR WRITTEN, EXPRESS OR IMPLIED, INCLUDING ANY WARRANTY OF MERCHANTABILITY, FITNESS FOR A PARTICULAR PURPOSE OR NON-INFRINGEMENT, AND NO OTHER REPRESENTATIONS OR CLAIMS OF ANY KIND SHALL BE BINDING ON OR OBLIGATE ACTIVISION.

When returning the Program for warranty replacement please send the original product disks only in protective packaging and include: (1) a photocopy of your dated sales receipt; (2) your name and return address typed or clearly printed; (3) a brief note describing the defect, the problem(s) you are encountered and the system on which you are running the Program; (4) if you are returning the Program after the 90-day warranty period, but within one year after the date of purchase, please include check or money order for \$20 U.S. currency per disc replacement. Note: Certified mail recommended.

In the U.S. send to: Warranty Replacements, Activision, Inc., P.O. Box 67713, Los Angeles, California 90067

LIMITATION ON DAMAGES. IN NO EVENT WILL ACTIVISION BE LIABLE FOR SPECIAL, INCIDENTAL OR CONSEQUENTIAL DAMAGES RESULTING FROM POSSESSION, USE OR MALFUNCTION OF THE PROGRAM, INCLUDING DAMAGES TO PROPERTY, LOSS OF GOODWILL, COMPUTER FAILURE OR MALFUNCTION AND, TO THE EXTENT PERMITTED BY LAW, DAMAGES FOR PERSONAL INJURIES, EVEN IF ACTIVISION HAS BEEN ADVISED OF THE POSSIBILITY OF SUCH DAMAGES. ACTIVISION'S LIABILITY SHALL NOT EXCEED THE ACTUAL PRICE PAID FOR THE LICENSE TO USE THIS PROGRAM. SOME STATES/COUNTRIES DO NOT ALLOW LIMITATIONS ON HOW LONG AN IMPLIED WARRANTY LASTS AND/OR THE EXCLUSION OR LIMITATION OF INCIDENTAL OR CONSEQUENTIAL DAMAGES. SO THE ABOVE LIMITATIONS AND/OR EXCLUSION OR LIMITATION OF LIABILITY MAY NOT APPLY TO YOU. THIS WARRANTY GIVES YOU SPECIFIC LEGAL RIGHTS, AND YOU MAY HAVE OTHER RIGHTS WHICH VARY FROM JURISDICTION TO JURISDICTION.

TERMINATION. Without prejudice to any other rights of Activision, this Agreement will terminate automatically if you fail to comply with its terms and conditions. In such event, you must destroy all copies of this Program and all of its component parts.

U.S. GOVERNMENT RESTRICTED RIGHTS. The Program and documentation have been developed entirely at private expense and are provided as "Commercial Computer Software" or "restricted computer software." Use, duplication or disclosure by the U.S. Government or a U.S. Government subcontractor is subject to the restrictions set forth in subparagraph (c)(1)(ii) of the Rights in Technical Data and Computer Software clauses in DFARS 252.227-7013 or as set forth in subparagraph (c)(1) and (2) of the Commercial Computer Software Restricted Rights clauses at FAR 52.227-19, as applicable. The Contractor/Manufacturer is Activision, Inc., 3100 Ocean Park Boulevard, Santa Monica, California 90405.

INJUNCTION. Because Activision would be irreparably damaged if the terms of this Agreement were not specifically enforced, you agree that Activision shall be entitled, without bond, other security or proof of damages, to appropriate equitable remedies with respect to breaches of this Agreement, in addition to such other remedies as Activision may otherwise have under applicable laws.

INDEMNITY. You agree to indemnify, defend and hold Activision, its partners, affiliates, contractors, officers, directors, employees and agents harmless from all damages, losses and expenses arising directly or indirectly from your acts and omissions to act in using the Product pursuant to the terms of this Agreement.

MISCELLANEOUS. This Agreement represents the complete agreement concerning this license between the parties and supersedes all prior agreements and representations between them. It may be amended only by a writing executed by both parties. If any provision of this Agreement is held to be unenforceable for any reason, such provision shall be reformed only to the extent necessary to make it enforceable and the remaining provisions of this Agreement shall not be affected. This Agreement shall be construed under California law as such law is applied to agreements between California residents entered into and to be performed within California, except as governed by federal law and you consent to the exclusive jurisdiction of the state and federal courts in Los Angeles, California. If you have any questions concerning this license, you may contact Activision at 3100 Ocean Park Boulevard, Santa Monica, California 90405, (310) 255-2000, Attn: Business and Legal Affairs, legal@activision.com.

Coming
Soon



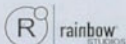
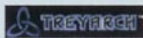
**SHAUN MURRAY'S
PRO WAKEBOARDER™**



Available
Now



PlayStation 2



Activision, Inc. P.O. Box 67713, Los Angeles, CA 90067

© 1999-2002 Activision, Inc. and its affiliates. Published and distributed by Activision Publishing, Inc. Activision and Pro Surfer are registered trademarks and Activision 02, Pro BMX, Pro Wakeboarder and Sports Revolution are trademarks of Activision, Inc. and its affiliates. All rights reserved. Kelly Slater and trademark of Kelly Slater, Mat Hoffman is a trademark of Mat Hoffman and Shaun Murray is a trademark of Shaun Murray. All other trademarks and trade names are property of their respective owners.

Licensed for play on the PlayStation 2 computer entertainment system with the NTSC U/C designation only. PlayStation and the "PS" Family logo are registered trademarks of Sony Computer Entertainment Inc. The ratings icon is a registered trademark of the Interactive Digital Software Association. Manufactured and printed in the U.S.A. THIS SOFTWARE IS COMPATIBLE WITH PLAYSTATION 2 CONSOLES WITH THE NTSC U/C DESIGNATION. U.S. AND FOREIGN PATENTS PENDING.

80429.226.US

PRODUCTS RANGE FROM
RATING PENDING TO TEEN

RP-T

CONTENT RATED BY
ESRB



SPORTS REVOLUTION

ACTIVISION.COM