



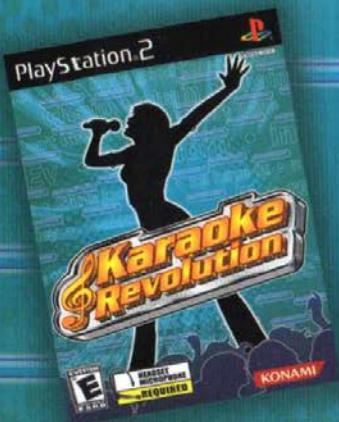
A REVOLUTION OF GAMES



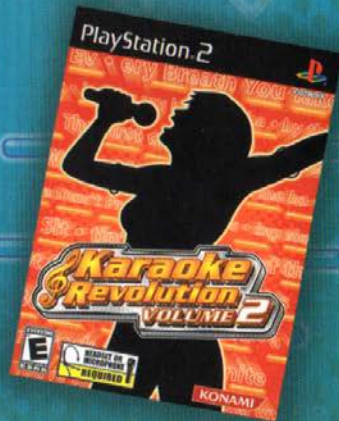
The Next Generation!



Smash hit songs, real music videos and new game modes



The ultimate interactive Karaoke experience



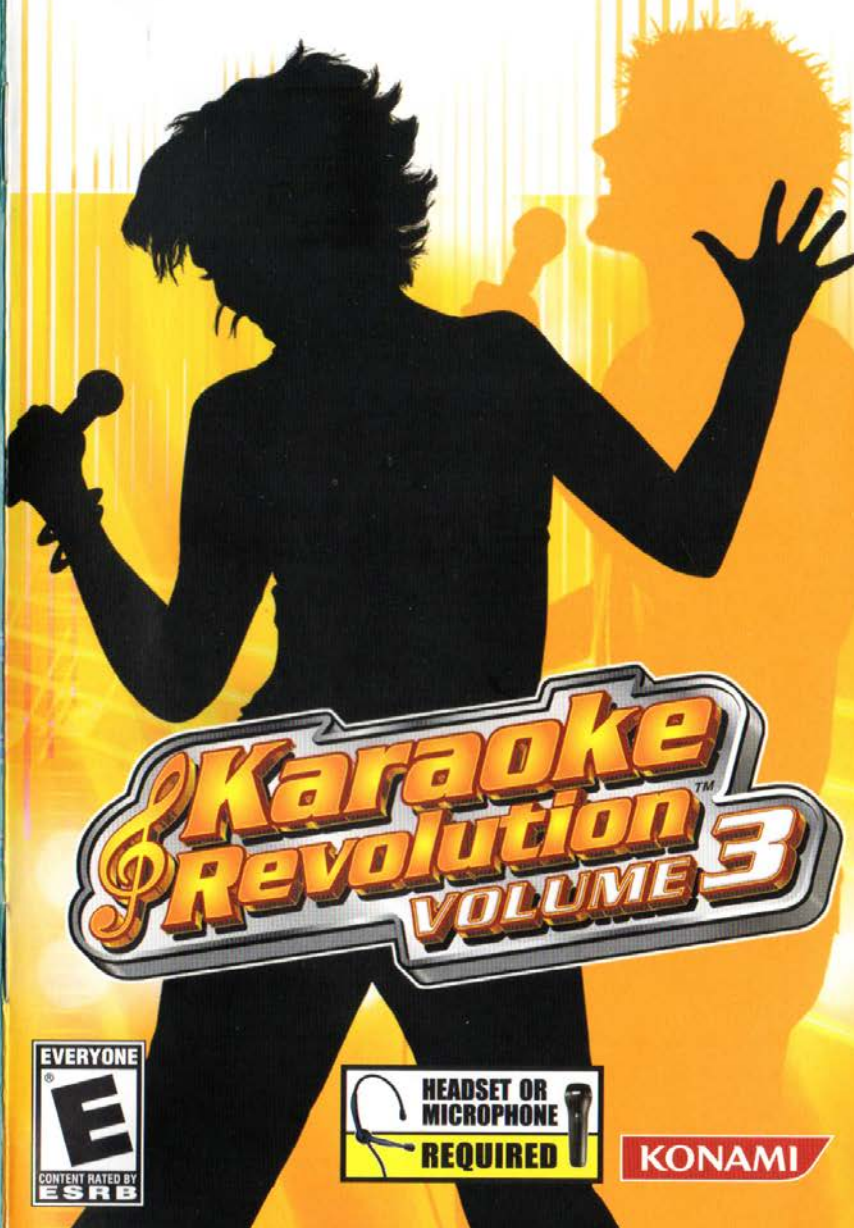
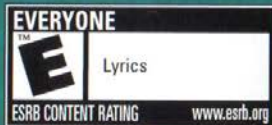
35 songs, new characters, new venues and new game modes

PlayStation 2

Konami Digital Entertainment - America, 1400 Bridge Parkway, Redwood City, CA 94065

KONAMI® and Dance Dance Revolution® are registered trademarks of KONAMI CORPORATION. DORMAX Dance Dance Revolution™ and KARAOKE REVOLUTION™ are trademarks of KONAMI CORPORATION. © 1999 2002 KONAMI & Konami Computer Entertainment Tokyo. © 1999 2003 KONAMI & Konami Computer Entertainment Tokyo. © 2003 2004 KONAMI. Developed by Harmonix Music Systems. Harmonix is a registered trademark of Harmonix Music Systems, Inc. KONAMI®, KARAOKE REVOLUTION™ and BEMANI™ are either registered trademarks or trademarks of KONAMI CORPORATION. © 2003 2004 KONAMI.

Licensed by Sony Computer Entertainment America for play on PlayStation 2 computer entertainment system. **EmuMovies** is a registered trademark of EmuMovies. "PS" and "PlayStation" and the "PS" Family logo are registered trademarks of Sony Computer Entertainment Inc. in the U.S.A. THIS SOFTWARE IS COMPATIBLE WITH PS2. DESIGNATION. U.S. AND FOREIGN PATENTS PENDING.



Karaoke Revolution VOLUME 3

WARNING: READ BEFORE USING YOUR PLAYSTATION®2 COMPUTER ENTERTAINMENT SYSTEM.

A very small percentage of individuals may experience epileptic seizures when exposed to certain light patterns or flashing lights. Exposure to certain patterns or backgrounds on a television screen or while playing video games, including games played on the PlayStation 2 console, may induce an epileptic seizure in these individuals. Certain conditions may induce previously undetected epileptic symptoms even in persons who have no history of prior seizures or epilepsy. If you, or anyone in your family, has an epileptic condition, consult your physician prior to playing. If you experience any of the following symptoms while playing a video game — dizziness, altered vision, eye or muscle twitches, loss of awareness, disorientation, any involuntary movement, or convulsions — IMMEDIATELY discontinue use and consult your physician before resuming play.

WARNING TO OWNERS OF PROJECTION TELEVISIONS:

Do not connect your PlayStation 2 console to a projection TV without first consulting the user manual for your projection TV, unless it is of the LCD type. Otherwise, it may permanently damage your TV screen.

USE OF UNAUTHORIZED PRODUCT:

The use of software or peripherals not authorized by Sony Computer Entertainment America may damage your console and/or invalidate your warranty. Only official or licensed peripherals should be used in the controller ports or memory card slots.

HANDLING YOUR PLAYSTATION 2 FORMAT DISC:

- This disc is intended for use only with PlayStation 2 consoles with the NTSC U/C designation.
- Do not bend it, crush it or submerge it in liquids.
- Do not leave it in direct sunlight or near a radiator or other source of heat.
- Be sure to take an occasional rest break during extended play.
- Keep this compact disc clean. Always hold the disc by the edges and keep it in its protective case when not in use. Clean the disc with a lint-free, soft, dry cloth, wiping in straight lines from center to outer edge. Never use solvents or abrasive cleaners.

Table of Contents

Getting Started	2
Controls	3
USB Headset/Microphone	4
Introduction	5
Main Menu	6
Prepare To Sing	7
Select Character	7
Judging Level	7
Select Venue	8
Select Song	9
How To Play	10
Game Screen	10
Music Staff	10
Phrases	10
Crowd Meter	11
Combos	11
Crowd Boost	11
Final Score	12
Hints & Tips	13
Game Modes	14
Quick Play	14
Single Player Modes	14
Showtime	14
Medley	14
Multi Player Modes	15
Medley	15
Arcade	15
Karaoke Competition	16
Duets	16
Duets	16
Sing-Off	18
Knockout	19
Karaoke	19
Training	19
Extras	20
High Scores	20
Credits	20
Videos	20
Cheats	20
Options	21
Microphone Setup	21
Sound Setup	21
Display Setup	21
Save/Load	21
Credits	22

Thank you for purchasing **Karaoke Revolution™ Volume 3**. For best results, we recommend that you read through this manual prior to playing the game.

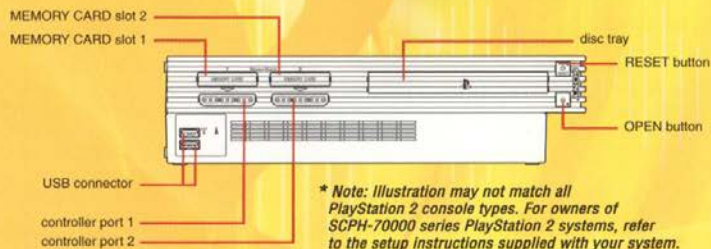
Konami is constantly striving to improve the quality of our products to give our customers the best gaming experiences possible. As a result, there may be some slight differences between versions of the same product, depending on when and where you purchased the game.

Karaoke Revolution™ Volume 3 is an original product produced and published by Konami Digital Entertainment, and developed by Harmonix Music Systems, Inc.

Getting Started

Setting Up Your PlayStation®2 System

Set up your PlayStation®2 computer entertainment system according to the instructions in the manual. Make sure the MAIN POWER switch (located in the back of the console) is turned ON. Press the RESET button. When the power indicator turns green, press the OPEN button and the disc tray will open. Place the **Karaoke Revolution™ Volume 3** disc on the disc tray with the label side facing up. Press the OPEN button again and the disc tray will close. Attach a DUALSHOCK®2 analog controller to controller port 1 and a USB headset or handheld microphone to a USB connector. Follow on-screen instructions and refer to this manual for information on using the software.



Memory Card (8MB)(for PlayStation®2)

To save game settings and progress, insert a memory card (8MB)(for PlayStation®2) into MEMORY CARD slot 1 (MEMORY CARD slot 2 is not used) of the PlayStation®2 computer entertainment system. You can load saved game data from the same memory card (8MB)(for PlayStation®2), or from any memory card (8MB)(for PlayStation®2) containing previously saved **Karaoke Revolution™ Volume 3** games.

NOTE: Karaoke Revolution™ Volume 3 uses at least 90 KB of memory card data to save each game. Make sure there is enough free space on your memory card (8MB) (for PlayStation®2) before starting play. Do not insert or remove a memory card (8MB)(for PlayStation®2) while saving/loading games or you may corrupt your save game data.

Controls

DUALSHOCK®2 ANALOG CONTROLLER CONFIGURATION



Menus

- directional buttons or left analog stick Highlight Menu Item
- directional buttons or left analog stick Change Highlighted Item
- × button Select Menu Item, Save Settings
- △ button Back to Previous Screen

In-Game Controls

- START button Pause Game
- While the song is playing, you can change the sound settings with the DUALSHOCK®2 analog controller. Use the following controls to mix the sound to your personal preference:
- × button (hold) + directional buttons Earpiece Volume
 - button (hold) + directional buttons Microphone Volume
 - △ button (hold) + directional buttons Guide Vocals Volume
 - button (hold) + directional buttons Music Volume

Controls

PlayStation®2 Headset/Microphone (Required)



Karaoke Revolution™ Volume 3 requires the use of at least one USB microphone or headset in order to play the game. If you do not already have a microphone or headset, there are several USB microphones and headsets available for purchase separately. The game supports microphones and headsets designed to work with the PlayStation®2, including the Karaoke Revolution Microphone and the Logitech® USB Microphone.

A USB headset/microphone must be plugged in at all times while playing the game. Before booting up the game, make sure to plug in a headset/microphone. The headset/microphone connects to either of the USB connectors, located on the front of the PlayStation®2. With the USB symbol facing up, insert the headset/microphone cable into one of the USB connectors. **Karaoke Revolution™ Volume 3** supports up to two microphones/headsets at a time.

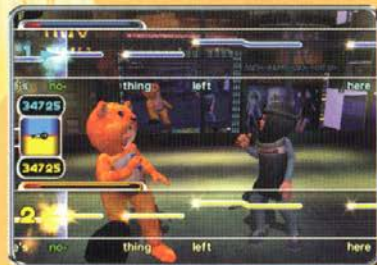
Two USB microphones/headsets are required for Duet Modes. If you have both microphones/headsets connected to your PlayStation®2 when you first run the game, the first microphone that is recognized by the system will be Microphone 1 within the game. Normally, this will be the microphone connected to the top USB port.

For best results, it is important to keep the headset microphone or handheld microphone positioned close to the front of your mouth while playing the game. We recommend that you access the Microphone Setup screen in Options to adjust the Mic Gain.

Introduction

Grab a friend and get ready – the ultimate party game now has duets! **Karaoke Revolution™ Volume 3** returns with support for two microphones and an all new lineup of current hits and karaoke classics. Two players can play as a team and sing duets, or battle head-to-head in several different game modes specifically designed for two microphones.

Karaoke Revolution™ Volume 3 allows you to sing your favorite songs in thrilling concert venues in front of a live audience that reacts to your performance.



The main objective of the game is to sing each song exactly like the original version. As you sing the song, your vocal performance is judged by how closely you can match the pitch and rhythm of the original lead vocals. If you sing like a pro, the crowd will cheer you on and you'll rack up the points. If you sing badly, you will lose the crowd and may even get booed off of the stage.

Don't worry, if you don't consider yourself a great singer you can lower the judging level and the game will become much more forgiving, even if you hit some bad notes. So don't be shy; get a bunch of friends together, step up to the mic, and start singing!

Main Menu



Quick Play

Jump in, select your favorite song, and start singing. Your performance will be scored.

Single Player

Game modes for one player:

- **Showtime** – Start your career as a singer and work your way to the top.
- **Medley** – Customize and perform your own song medley.

Multi Player

Game modes for up to eight players. Players take turns singing with one microphone:

- **Medley** – Perform song medleys and compete for the highest score (for 2 to 8 players)
- **Arcade** – Take turns singing to see who can score the most points and win the most rounds (for 2 to 8 players)
- **Karaoke Competition** – There is no scoring in this mode; each contestant votes on the performances (for 3 to 8 players)

Duet

Game modes that feature two players singing at the same time:
(2 microphones/headsets required)

- **Duets** – Two players play as a team and sing together for a combined score; includes traditional duets and regular songs (for 1 to 4 teams of 2 players)
- **Sing-Off** – Players sing alternating phrases and directly compete for the highest score (for 2 players)
- **Knockout** – Battle head-to-head on the same song while trying to knockout the opponent (for 2 players)

Karaoke

Standard Karaoke singing with no scoring, for one or two singers.

Training

Learn the basics of the game interface and how to play **Karaoke Revolution™ Volume 3**.

Extras

View lots of extra goodies including high scores, credits, videos, and cheats.

Options


Access the microphone, sound, display, and save/load options.

Prepare to Sing

Select Character

When you begin a new game, you will be able to customize your main character.

USERNAME

Select an existing name or enter a new name. You can delete any name in the list by pressing the  button.

CHARACTER

There are 12 main characters and 10 special characters to choose from, plus additional characters that you can unlock in Showtime Mode.

OUTFIT

Select an outfit for your character. New outfits will become available as you play through the game. Some of the special characters only have 1 outfit available.

JUDGING LEVEL

Determines how closely the vocal analyzer judges your singing performance against the original song (see Judging Level below).

When you proceed to the next screen, your username, character, outfit and judging level will be automatically saved to the memory card.

Judging Level

In **Karaoke Revolution™ Volume 3**, we offer four different judging levels for each player's vocal performance:

EASY

MEDIUM

HARD

EXPERT

Your singing will be judged and rated as you play the game. Each player is able to scale the judging difficulty individually, so that everyone has fun no matter how well they can sing. At the lower judging levels, the game widens the range of pitch and rhythm that is accepted. It will recognize that you are singing the proper notes even if your pitch or timing is a little off. The phrase meter will be shorter and will fill up quickly, making it easier to get a high rating for the phrase. If you select a higher judging level, you will need to sing much more closely to the original track, and the phrase meter will take longer to fill up.

NOTE: Judging Level is not available in the Karaoke and Karaoke Competition modes of play since there is no scoring in these modes.



Prepare to Sing

Select Venue

There are 13 unique venues to choose from. You must complete Showtime Mode in order to unlock all of the venues in the game. Press the **○** button to select a random venue (all modes except Showtime).



- GARAGE** Invite people over and put on a show in your garage.
- THE PARTY** Sing in front of your friends at a local house party.
- CENTRAL STATION** Take it to the streets and sing in the subway station.
- THE PIT STOP** Play with your new band in the local rock club.
- COUNTY FAIR** Strut your stuff on a big outdoor stage at the county fair.
- THE WAGON WHEEL** Holler and howl in this wild country bar.
- MUSIC VIDEO** Shoot your first music video with a variety of backdrops.
- SUPERSTAR TV** Make an appearance on a new television show.
- CLUB AVALANCHE** Bust out the jams in the hottest new club in town.
- HMX RECORDS** Promote your band with a live appearance in a record store.
- ROYAL HALL** Entertain the crowd in an elegant and stately concert hall.
- THE ROOFTOP** Showcase your skills high above the city streets.
- ENORMOBOWL** Perform live in the biggest concert venue in the world!
- FULL SCREEN LYRICS** Full screen lyrics will be displayed (only available in Karaoke Modes)

Prepare to Sing

Select Song

Highlight a song on the list to view additional information and hear a short preview of the song. You can press the **○** button to select a random song on the list.



Song information:

- SONG LENGTH** Length of the song in minutes:seconds format.
- HIGH SCORE** High score for the song at the current judging level.
- COMPLEXITY** The mic icons indicate the overall complexity of the song:

-  Easiest songs to sing
-  Medium song complexity
-  Most difficult songs to sing

Depending on the game mode, you may be presented with additional options after you select the song you wish to sing:

- PERFORM** Perform the song in front of a live crowd with scoring turned on. (Showtime)
- FULL SONG** Sing the full version of the song with scoring turned on. (Quick Play, Arcade, Duets, Karaoke Competition)
- SHORT SONG** Sing a short version of the song with scoring turned on. (Quick Play, Arcade, Duets, Karaoke Competition)
- PRACTICE** Practice the song before you are ready to perform the song for points. Scoring is turned off and you will not get booted off of the stage. (Quick Play, Showtime, Duets with one team)

How to Play

GAME SCREEN



Music Staff

The **Music Staff** and **Lyrics** are displayed at the bottom of the screen. The blue bars which scroll across the staff are called **Note Tubes**. Note tubes represent the pitch and length of each note you have to sing during the song. Each word within the song matches up with a corresponding note tube.

As the lyrics scroll across the screen, sing the proper words and try to match the note tubes as they reach the **Now Bar**. The **Pitch Arrow** will appear while you are singing; this represents your current pitch. The arrow will move away from the note tube and tilt slightly up or down if you sing above or below the note. If the arrow flattens out and lines up with the note tube, and green sparks appear, this means that you are hitting the note correctly.

Phrases

A **Phrase** is considered to be one line of lyrics within the song. The end of each phrase is designated by a **Phrase Marker**. When the phrase marker reaches the now bar, you have completed that phrase and a new phrase will begin.

How to Play

As you sing the correct notes in the phrase, the **Phrase Meter** will fill up and change colors. Try to hit as many notes as you can to fill the phrase meter. At the end of the phrase, your score will increase and you will receive a performance rating of **LOUSY**, **POOR**, **OK**, **GOOD**, or **GREAT**.

Crowd Meter

The **Crowd Meter** represents the excitement level of the crowd. This meter will move up or down after you receive a rating for each phrase. Try to keep the crowd excited throughout the song. If you are able to pin the meter to the maximum level, the meter will flash green and you will receive a special 2X score multiplier which doubles your score as long as you keep the meter pinned. If the meter drops down to a low position and starts flashing red, this is a warning that you are about to be booed off the stage. If you continue to receive bad ratings, you will eventually get booed off of the stage and the song will end.

Combos

If you manage to get a "Good" or "Great" rating on three phrases in a row, you will start a **Combo**. During the combo, you will receive a score bonus for every phrase. The number of combos will appear next to the phrase meter while the combo is in effect. As the combo number increases, the score bonus will increase as well. When you string together a 5 phrase combo, you will hit the maximum score bonus and "Combo: Max!" will be displayed on the screen. Continue to score "Good" or "Great" to keep the combo going.

Crowd Boost

During random phrases within the song, green sparkling note tubes will appear on the staff. If you hit the notes correctly and get a "Good" or "Great" rating, you will receive a **Crowd Boost**. The crowd boost will send the crowd meter shooting upwards. The crowd boost can be especially helpful when your crowd meter is really low.



How to Play

Final Score

At the end of the song, the Final Score Screen will display your score with the percentage of each phrase rating listed underneath. The score gauge shows how well you performed overall and how close you were to receiving an award.



Additional information is listed below:

SONG	Name of the song performed
PLAYER	Username of current player
HIGH SCORE	Current high score or new high score
HIGHEST COMBO	Highest combo achieved
JUDGING LEVEL	Judging level for the song

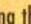


If you score enough points, you will be awarded a gold or platinum record. Win gold and platinum records in Showtime Mode to unlock special items in the game.

How to Play

HINTS & TIPS

Microphone Placement – For best results, it is important to keep the headset microphone positioned very close to the front of your mouth (1-3 cm) with the red dot facing your mouth. If you are using a handheld microphone, try to keep the microphone at the same distance from your mouth and sing directly into the microphone. We recommend that you access the Microphone Setup screen in Options to adjust the Mic Gain.

Headset Earpiece – If you are using a USB headset, you will be able to listen to your own voice through the earpiece without any music. This is like having your own professional in-ear monitor! You can control the volume level of the earpiece during a song by holding the  button and pressing the directional buttons up/down.

Practice – Every song featured in the game includes the lead vocals. In order to learn the songs, you should listen to and sing along with the original vocals. We have included a Practice option in Showtime and Quick Play, and a Karaoke Mode which you can use to practice the songs. You can also practice up on your duet parts and harmonies in Duets Mode, when only 1 team is selected.

Octaves – You can sing the songs in any octave without getting penalized. If certain notes are too high or low, try singing them in a different octave; the game system will automatically adjust.

Holding Notes – The game system will easily recognize vowel sounds as real notes. For long notes that are held, be sure to hold the vowel within the word, not the consonant. Make sure to hold each note for the entire length of the note tube. Also, try to sing cleanly without any distortion in your voice.

Judging Level – If you are having trouble getting through a particular song, try selecting a lower judging level or practice the song in Karaoke Mode.

Unlocked Items – All of the items that you unlock in the Single Player Modes will become globally available in all of the game modes for all of the players. The unlocked items will be automatically saved to the memory card (8MB)(for PlayStation®2).

Game Modes

QUICK PLAY

Quick Play makes it easy to sing a song without having to enter a full game mode. Choose your character, judging level, venue and any song from the list, then start singing!

Quick Play is also a great mode to use when you have a group of people who want to play the game, but aren't interested in a full multiplayer game. Sing one song, then let the next person choose what they want to sing.

SINGLE PLAYER MODES

Showtime

Warm up your vocal cords, step up to the mic, and begin your career as a professional singer. In Showtime Mode, you work your way to the top by starting out in your garage and singing through all of the venues until you reach the Enormobowl!

Within each venue, you will be given a selection of 4 songs to choose from. You must complete at least 1 song before moving on to the next stage. If you can make it through all 8 stages and win some awards along the way, you will unlock all sorts of cool stuff that can be used in any of the game modes. You haven't completely conquered Showtime Mode until you have obtained a platinum record on every song available.

Medley

In Medley Mode, you can customize and sing your own song medleys. Short clips from each song that you select will play in rapid succession. You must sing through all of the song clips to successfully complete the medley.



On the Medley Setup screen, set the number of songs (3, 4 or 5) you would like to include in the medley. Next, select the songs you wish to include in the medley. Each song you select will be displayed on the Playlist at the right side of the screen. If you have selected a song by mistake, press the **▲** button to take that song off of the playlist. When you have selected all of the songs for your medley, CONTINUE will be highlighted. Press the **⊗** button to start your medley.

If you want an extra challenge, press the **◎** button to fill all of the slots with random songs. Try to sing each song as it comes up. Fortunately, we give you a little help; the song title is displayed on the screen when each song clip begins.

Game Modes

MULTI PLAYER MODES

Medley

This is the multiplayer version of Medley Mode for 2 to 8 players. The players take turns singing song medleys and their scores are compared at the end of each round. Score the most points and win the most rounds to beat the competition!



When you begin a multiplayer medley game, there are several options to set for the game:

PLAYERS	Number of players in the game (2-8)
SONGS	Number of song clips in the medleys (3-5)
ROUNDS	Number of rounds in the game (1-5)
RANDOM ROUNDS	
NO RANDOM ROUNDS	Players select the songs
RANDOM LAST ROUND	Songs are randomly selected in the last round
ALL RANDOM ROUNDS	Songs are randomly selected in all rounds

At the beginning of every round, the players select the songs they wish to place in their song medleys. If the Random Rounds option is active, the song selection will be randomly generated for that round.

Arcade

In Arcade Mode, 2 to 8 players take turns singing individual songs to see who can get the highest score and win the most rounds. Each player will be able to select their own judging level along with their character, so expert singers can handicap themselves against novices.

Game Modes

When you begin a multiplayer arcade game, there are several options to set for the game:

PLAYERS Number of players in the game (2-8)

ROUNDS Number of rounds in the game (1-5)

RANDOM ROUNDS

NO RANDOM ROUNDS Players select the songs

RANDOM LAST ROUND Songs are randomly selected in the last round

ALL RANDOM ROUNDS Songs are randomly selected in all rounds

FULL/SHORT SONG Sing the full (normal) version or short version of the songs.

At the end of each round, you will be brought to the Round Recap Screen which has information about your progress in the current game. A final winner is declared at the end of the game.

Karaoke Competition

This is a multi player version of Karaoke for 3 to 8 players. Instead of the game system rating your performance, the contestants themselves are the judges. At the end of each song, the players will get a chance to secretly rate the performance of the singer. The player with the highest overall rating at the end of the final round wins the competition.

DUET MODES

All of the duet modes require 2 microphones in order to play.

Duets

In Duets, two players sing together as a team for a combined score. When a normal song is selected, the two players sing the same melody at the same time. However, certain songs within this mode allow the players to sing in harmony with separate vocal parts. These special duet songs are marked with a duet icon on the song selection screen.

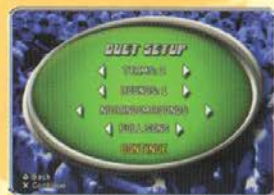
The object of Duets is to score the most points possible as a team. The combos, crowd boosts and crowd meter all react based off of the team performance. In order to get a combo, both players



★DUET

Game Modes

on the team have to get consecutive "Good" or "Great" phrase ratings. At the end of the song each player's individual score is displayed separately, and added together for a final team score.



When you begin a Multi Team Duets game, there are several options to set for the game:

TEAMS Number of 2 player teams in the game (2-4)

ROUNDS Number of rounds in the game (1-5)

RANDOM ROUNDS

NO RANDOM ROUNDS Players select the songs

RANDOM LAST ROUND Songs are randomly selected in the last round

ALL RANDOM ROUNDS Songs are randomly selected in all rounds

FULL/SHORT SONG Sing the full (normal) version or short version of the songs.

PRACTICE

If only one team is selected in Duets, a Practice option is available before you perform the song. Use this option to practice difficult duet sections or get your harmonies down.

If you had previously selected a song with the duet icon, you are taken to a special setup screen. Each player is able to check their microphone and select the vocal part they wish to sing (male vocal, female vocal, etc.). You can hear a short preview by highlighting each vocal part. Press the left or right directional buttons to switch vocal parts.



On the Duets Practice screen, you are given an additional option. The volume level of each vocal part can be changed to Loud or Soft. This is especially useful when learning a particular vocal part; you can set the volume of the other vocal to Soft in order to hear your part more clearly. You can also lower the overall music volume and raise the lead vocals volume to make your part stand out. Keep practicing those difficult harmonies!

Game Modes

Sing-Off Mode

In Sing-Off Mode, two players try to top each other as they sing alternating phrases. The objective of Sing-Off Mode is to outscore your opponent over the course of the entire song.



When you begin a Sing-Off game, there are several options to set for the game:

- BEST OF** Number of rounds in the series (1, 3 or 5)
- RANDOM ROUNDS**
 - NO RANDOM ROUNDS** Players select the songs
 - RANDOM LAST ROUND** Songs are randomly selected in the last round
 - ALL RANDOM ROUNDS** Songs are randomly selected in all rounds
- FULL/SHORT SONG** Sing the full (normal) version or short version of the songs.

Note: The match will end as soon as a player reaches the total number of rounds required to win, even if the total number of rounds have not been completed.

Knockout Mode

In Knockout Mode, two players go head-to-head and sing the same song in order to knockout their opponent. In order to score a knockout, a player must consistently receive better phrase ratings than their opponent.



A Knockout Meter tracks each player's progress during a song. At the end of each phrase, the knockout meter moves based on the difference between each player's phrase rating. The player that scores the higher rating for that phrase will fill the knockout meter with their

Game Modes

color (blue or gold). When the meter is almost completely full of one color and a player is in danger of being knocked out, the meter and the staff will flash red and a warning sound will play.

When the knockout meter is completely filled with a player's color, their opponent is knocked out of the round. If neither player scores a knockout by the end of the song, the player with the most points at the end of the song wins the round.



When you begin a Knockout game, there are several options to set for the game:

- BEST OF** Number of rounds in the series (1, 3 or 5)
- RANDOM ROUNDS**
 - NO RANDOM ROUNDS** Players select the songs
 - RANDOM LAST ROUND** Songs are randomly selected in the last round
 - ALL RANDOM ROUNDS** Songs are randomly selected in all rounds
- FULL/SHORT SONG** Sing the full (normal) version or short version of the songs.

Note: The match will end as soon as a player reaches the total number of rounds required to win, even if the total number of rounds have not been completed.

KARAOKE

Karaoke Mode is comparable to a normal karaoke machine. The lyrics of the song are displayed on screen without the music staff or note tubes and there is no scoring involved.

When you first enter this mode, you are given an option for One Singer or Two Singers. If One Singer is selected, there is an additional "Full Screen Lyrics" venue that is available on the Select Venue screen. This venue will display stationary lyrics on the entire screen, just like standard karaoke. If you select Two Singers, each player picks their own character, and the duet songs have a separate line of lyrics for each player.

TRAINING

In Training Mode, we teach you the basics of the game including the interface, and we'll take you through a few interactive examples. We recommend you go through training mode to get a better handle on how the game works before playing the other game modes.

Extras

High Scores

While you play the game, high scores will be saved for every full length song (high scores are not saved in Duet modes). You can check all of your high scores here. A high score is displayed for every song at each judging level.

Credits

Review the list of people who contributed lots of time, effort, and hard work (not to mention some really great singing) to bring you **Karaoke Revolution™ Volume 3**.

Videos

You can view a behind the scenes video here.

Cheats

Cheat codes will be listed here after you unlock them in Showtime.

Options

Microphone Setup

In Microphone Setup, you can adjust the Mic Gain, which is the input level of the microphone. We recommend using the default setting unless the microphone does not seem to be picking up your voice properly. Turn up the Mic Gain if the microphone is not picking up your voice properly. Keep in mind that you may experience distortion if you turn up the Mic Gain too high.

Sound Setup

Many of these settings can be changed with the DUALSHOCK®2 analog controller while a song is playing. See CONTROLS for more details:

MUSIC	Volume level of the background music track.
LEAD VOCALS	Volume level of the original lead vocals in the song.
SOUND FX	Volume level of the sound effects within the game.
MIC VOLUME	Volume level of the microphone playback through the speakers (different than Mic Gain).
EARPIECE	Volume level of your voice in the earpiece monitor (headset only).

Display Setup

MUSIC STAFF	Turn the music staff and the meters ON/OFF.
LYRICS	Turn the lyrics ON/OFF.

Save/Load

Your progress will automatically be saved as you play the game and loaded each time you boot up the game. However, if you have just inserted a memory card (8MB) (for PlayStation®2) and need to save/load or you wish to turn off the Autosave feature, you can do so here.

SAVE	Save your game to the memory card (8MB) (for PlayStation®2). NOTE: This will overwrite your existing save game file.
LOAD	Load your game from the memory card (8MB) (for PlayStation®2).
REFRESH	Refresh the screen if a new memory card (8MB) (for PlayStation®2) has been inserted.
AUTOSAVE	Turn the Autosave feature ON/OFF. Remember, if you turn Autosave OFF, you will have to manually save your progress.

Credits

HARMONIX

PROJECT MANAGEMENT

Project Leader
Creative Director
Director of Technology
Art Director
Music Director
QA Manager

PROGRAMMING TEAM

Lead Programmers
Engine Programmer
Programmer

MUSIC TEAM

Audio Lead
Sound Designers

ART TEAM

Art Lead
Character Designers
3D Character Artists
Venue Artists
Game Shell, HUD Artists
Lip Sync Animators
Character Animator
Video Artist

QUALITY ASSURANCE

Lead Tester
Testers

HARMONIX MANAGEMENT

CEO
CTO
CFO
VP Product Development
Seneschal
Network Admin

Fonts
Images

Special Thanks

WAVEGROUP SOUND

Music/Vocals Recorded & Produced at WaveGroup Sound (Fremont, CA)
Additional Music/Vocals Recorded & Produced by Robert Berry at SoundTek Studios (Campbell, CA)
Additional Music Recorded & Produced by Lyle Workman at Lyleworks (Glendale, CA)
Additional Music Recorded and Produced by Lance Taber (Sacramento, CA)

Executive Music Producer
Additional Production Services

Guitar
Bass

Tracy Rosenthal-Newsom
Josh "RoboKid" Randall
Eran Egozy
Ryan Lesser
Kasson Crooker
Paul Gallo

Steve Meroi, Christine Legge
Eric Malafeew
Damian Frank

Pete Maguire
Jeff Allen, Sachi Sato, Uygur "Nomad" Ovunc

Adolph Wong
Jennifer Hrabota Lesser, Matthew Gilpin
Jennifer Hrabota Lesser, Matt Taylor, Matthew Gilpin
David Flamburis, Brian Gibson, Dare Matheson
Kevin McGinnis, Jason Arnone
Chris Saraullo, Joey Kan, David Schlafman
Antonio Bolfo
Frank Difficult

DeVron Warner
Robynn Amy, Sean Baptiste, Phil Beaudreau,
Shannon Chwialkowski, Stefan Colson, Jeannine Hebb,
Naoko Takamoto, Reuben Taube

Alex Rigopoulos
Eran Egozy
Mike Dornbrook
Greg LaPiccolo
Kris Fell
Ed Selvaraj

fontalicious.com, Pixel Surgeon, Iconian Fonts, Ray Larabee
Jason Kendall, Getty Images, Audrey Welch, Josh Lewis

Gene Landy, Newbury Comics

Will Littlejohn
Darryl C. Anders, Robert Berry, Scott Dugdale,
Lance Taber, Lyle Workman
Ken Harrill, Lance Taber, Lyle Workman
Darryl C. Anders, Robert Berry, Lyle Workman

Credits

Drums, Percussion, Congas

Keyboards, Piano, Organ
Horns & Flute
Vocalists

Sound Effects
Engineers

Assistant Engineers
Programmers
Talent Coordination

Special Thanks to Sky Greenawalt

KONAMI DIGITAL ENTERTAINMENT - AMERICA

PRODUCTION

Senior Producer
Associate Producer
VP of Development
Executive Liaison
Additional Production Assistance
Design & Music Direction

QA Manager
QA Assistant Manager
Senior QA Lead
QA Liaison
Assistant Staff Leads
Lead Tester
Testers

LICENSING

VP of Content Licensing
Executive Assistant

PUBLISHING

President
COO
VP of Operations
Senior VP of Sales & Marketing
General Counsel

Product Manager
Additional Product Management
Senior Director of Marketing
Associate Director of Marketing
Director of Marketing Communications
Associate Director of Creative Services
Operations Manager
Associate Director of PR
Associate Manager of PR
Product Website
Package Design and Layout

Robert Berry, Gregg Bissonette, Scott Dugdale,
Will Littlejohn, Bryant Mills, Tearle Tomlin, Joey Waronker
Robert Berry, Scott Dugdale, Will Littlejohn
Gavin DiStasi, Melecio Magdaluyo
Darryl C. Anders, Sheida Ansari, Stephanya Barranti,
Robert Berry, Larry Brags, Brad Brooks, Andrew Chaikin,
Frank Clary, Mary Ellen Duell, Thom Duell, Scott Dugdale,
Indra Jones, Daline Jones-Weber, Michael Larsen,
Tony Lindsay, Mark Lee, Lisabell, Will Littlejohn,
Brooks Lundy, Chris Parry, Danny Sharago, Peter Steinbach,
Kenneth Washington, Austin Willacy, Susan Zelinsky

Mark Lee, Will Littlejohn
Robert Berry, Scott Dugdale, Bill Frank, Mark Lee,
Will Littlejohn, Sue Palmulder, Peter Steinbach,
Lance Taber, Lyle Workman
Frank Clary, Tearle Tomlin, Gin Wesener
Robert Berry, Scott Dugdale, Will Littlejohn
Leslie Barton

Michael McHale
Shawn Green
Kurt Busch
Tomoko Matsubayashi
Brand Inman
Michael McHale, Shawn Green

Michael Klug
Tsuyoshi "Yashiki" Arayashiki
Keith Matejka
Hiroami Nakajima
Jon Rivera, Jacqueline Jaszka
Ted Lange
John An, Kevin Chen, Gabriel Darone, Andrew Fitch,
Melissa Hadley, Michael Larsen, Joe Longworth,
Catherine Mitsunaga, Rob Morgan, Brian Perez, Renee Ya

Linda Osher
Natalie Martin

Tommy Gotsubo
Geoff Mulligan
Linda Stackpoole
Catherine Fowler
Nick Lefevre

Matt Knoles
Jason Enos
Rick Naylor
Brad Schlachter
Cherrie McKinnon
Monique Catley
Kathie Tompkins
Marc Franklin
Peter Nguyen
Mike Dobbins
Eclipse Advertising, Inc., Philip Travisano

Credits

Thanks to Ritche Corpus, Robert Jacobson, Cameron Little, Mike Smith, Fred Swan, Mitch Kampf, Joe Kreiner and everyone at Logitech for the Logitech® USB Microphone for PlayStation®2

Lip sync data created with Impersonator™ from OC3 Entertainment, Inc. Thanks to Doug Perkowski, Jamie Redmond and John Briggs at OC3.

Motion capture data was captured and processed at House of Moves. Thanks to Jarrod Phillips and everyone at HoM.

Thanks to Sony Computer Entertainment America including Nathan Bosia, Chris Clark, Mark Deloura, Brian Silva, Aletheia Simonson and Mark Vitello.

Special Thanks:

Everyone at KDE, Harmonix, WaveGroup, The Musicians, Paul Armatta, Theresa Bottenhorn, Jean Chung, Scott Dolph, Rob Goff, Melinda Hodgins, Hideo Kojima, Daniel Laskowski, Mark Lee, Barbara Loo, Takeshi Minagawa, Christy Motoyoshi, Jill Nightingale, Ken Ogasawara, Jennifer Price, Karyn Mason, Kaz Nirasawa, Jason Ray, Doug Rebert, Brett Robinson, Matt Robinson, Brad Smith, Daniel Tyrrell, Lee Allison Verdeckberg, Brett Walter, Akira Yamaoka

KONAMI CORPORATION

Executive Corporate Officer
General Manager
Product Manager
License Support

Kazumi Kitaue
Tetsuya Hiyoshi
Yoko Sekiguchi
Yoko Ishioka

MUSIC CREDITS

ABC

(Alphonso Mizell, Freddie Perren, Deke Richards, Berry Gordy, Jr.)
Published by Jobete Music Co., Inc. (ASCAP)

AGAINST ALL ODDS

(Phil Collins)
Published by EMI Golden Torch Music Corp. and EMI April Music Inc. (ASCAP)

AIN'T NO MOUNTAIN HIGH ENOUGH

(Valerie Simpson and Nickolas Ashford)
Published by Jobete Music Co., Inc. (ASCAP)

BEAT IT

(Michael Jackson)
Published by Warner-Tamerlane Publishing Corp. (BMI)

BURN

(Bryan Michael Cox, Jermaine Dupri, Usher Raymond)
© 2004 Published by W.B.M. Music Corp. (SESAC) o/b/o itself and Noontime South Inc. (SESAC) and Babyboy's Little Publishing Company (SESAC), EMI April Music Inc. (ASCAP), Shaniah Cymone Music (ASCAP) and UR-IV Music (ASCAP)

CALIFORNIA DREAMIN'

(John Phillips, Michelle Gilliam)
© 1965 Published by Universal Music Corp.

CARELESS WHISPER

(George Michael, Andrew Ridgeley)
Published by Wham Music Ltd. and Morrison-Leahy Music Ltd. (PRS)
Administered by Chappell & Co.

CHINA GROVE

(Tom Johnston)
©1973 Published by Warner-Tamerlane Publishing Corp. (BMI)

Credits

COME CLEAN

(Kara DiGuardi, John Shanks)
©2003 Published by WB Music Corp. (ASCAP) o/b/o itself, Dylan Jackson Music (ASCAP) and K'Stuff Publishing (BMI) c/o EMI Blackwood (BMI)
All Rights Reserved. Used by Permission.

DON'T YOU (FORGET ABOUT ME)

(Steve Schiff, Keith Forsey)
©1985 Published by Songs of Universal, Inc.o/b/o Usi B Global Music Publishing / Universal Music

FLASHDANCE... WHAT A FEELING

(Giorgio Moroder, Keith Forsey, Irene Cara)
© 1983 Published by WB Music Corp. (ASCAP), Alcor Music (USA) (ASCAP) /Carub Music (ASCAP)
Administered by WB Music Corp. and Famous Music Corporation (ASCAP)

HOLD ON

(Benji Madden, Joel Madden)
Published by EMI April Music Inc. (ASCAP)

I GOT YOU BABE

(Sonny Bono)
© 1965 Cotillion Music, Inc. (BMI) and Chris-Marc Music (BMI)
Administered by Cotillion Music, Inc.

IF I AIN'T GOT YOU

(Alicia Keys)
Published by EMI April Music Inc. (ASCAP)

IN THE MIDNIGHT HOUR

(Steve Cropper, Wilson Pickett)
© 1965 Published by Cotillion Music Inc. (BMI) and Irving Inc Music Inc. (BMI)

JOY TO THE WORLD

(Hoyt Axton)
© 1970 Published by Irving Music, Inc (BMI)

KILLING ME SOFTLY

(Charles Fox, Norman Gimbel)
© 1972 Published by Rodali Music (BMI) admin. by Sony/ATV Songs LLC and Fox-Gimbel Productions, Inc. (BMI)

LEAVE (GET OUT)

(Carsten Schack, Kenneth Karlin, Alex Cantrell, Phillip White)
Published by Songs of Dreamworks (BMI) and Alley Gaddy Music (BMI)
Administered by Cherry River Music Co. (BMI) and EMI Blackwood Music Inc. (BMI) and Plaything Music o/b/o itself and Smooth as Silk Publishing (ASCAP)

LOVE SHACK

(Kate Pierson, Fred Schneider, Keith Strickland, Cindy Wilson)
Published by EMI Blackwood Music Inc. (BMI)

MEANT TO LIVE

(Jonathan Foreman, Timothy Foreman)
© 2003 Published by Meadowgreen Music / Sugar Pete Songs (ASCAP)
Administered by EMI CMG Publishing

MY IMMORTAL

(Amy Lee, David Hodges, Ben Moody)
© 2003 Published by Zombies Ate My Publishing, For the Fallen Publishing and Dwight Fye Music, Inc. (BMI)

NEW YORK, NEW YORK

(John Kander, Fred Ebb)
Published by EMI Unart Catalog Inc. (BMI)

Credits

OOPS!... I DID IT AGAIN

(Max Martin, Rami Yacoub)

© 2000 Published by Zomba Music Publishers Ltd.

Administered by Zomba Enterprises Inc (ASCAP) (US & Canada)

RESPECT

(Otis Redding)

© 1965 Published by Irving Music, Inc (BMI)

SHINING STAR

(Maurice White, Philip Bailey, Lorenzo Dunn)

Published by EMI April Music Inc. (ASCAP)

SNAKE EATER

Music/words by Norihiko Hibino

Vocals by Cynthia Harrell

SOMEDAY

(Chad Kroeger, Michael Kroeger, Ryan Peake, Ryan Vikedal)

© 2003 Published by Warner-Tamerlane Publishing Corp. (BMI), Arm Your Dillo Publishing Inc.(SOCAN),

Black Diesel Music, Inc. (SOCAN), Zero G Music Inc. (SOCAN) and Ladokiv Music Inc. (SOCAN)

Administered by Warner-Tamerlane Publishing Corp (BMI)

TAKE MY BREATH AWAY

(Giorgio Moroder, Tim Whitlock)

© 1986 Published by WB Music Corp. (ASCAP) and Famous Music Corporation (ASCAP)

THANK YOU

(Paul Herman, Dido Armstrong)

Published by EMI Blackwood Music Inc (BMI), Warner Chappell Music LTD. (PRS) and Champion Music

Administered by WB Music Corp.

THE REASON

(Douglas Robb, Daniel Estrin, Chris Hesse, Markku Lappalainen)

©2003 Published by WB Music Corp. (ASCAP) and Spread Your Cheeks and Push Out the Music (ASCAP)

TWIST AND SHOUT

(Phil Medley, Bill Russell)

© 1964 Administered by Sony/ATV Songs LLC)

UNCHAINED MELODY

(Hy Zaret, Alex North)

© 1955 Published by Frank Music Corp.

UNDER PRESSURE

(David Bowie, Freddie Mercury, Brian May, John Deacon, Roger Taylor)

© 1981 Published by Screen Gems-EMI Music Inc./ Beechwood Music Corp (BMI) and Tintoretto Music (BMI)

Administered by RZO Music, Inc.

WAITING FOR YOU

Lyrics by Hiroyuki Owaku (Japanese) and Joe Romersa (English)

Music by Akira Yamaoka

Vocals by Melissa Williamson

WHEN I'M GONE

(Brad Arnold, Matthew Roberts, Robert Harrell, Christopher Henderson)

© 2002 Published by Songs of Universal, Inc. o/b/o itself and Escatawpa Songs

Credits

WHY CAN'T I

(Lauren Christy, Graham Edwards, Scott Spock, Liz Phair)

© 2003 Published by BMG Songs, Inc. (ASCAP) / Graham Edwards Songs & Careers BMG Music Publishing,

Inc. (BMI) / Scott Spock Songs (BMI) / Sony/ATV Tunes LLC / Civil War Days Music (ASCAP), Warner-

Tamerlane Publishing Corp. (BMI) o/b/o itself and Rainbow Fish Publishing (BMI), Hollylodge Music (BMI)

Administered by Warner-Tamerlane Publishing Corp.

YOU'RE THE ONE THAT I WANT

(John Farrar)

© 1978 Published by Unichappell Music Inc.(BMI), o/b/o itself and John Farrar Music (BMI)

Administered by Unichappell Music Inc.

Perfect for:



SING ALONG

with

The Logitech® USB Karaoke Microphone

- High-quality voice input with USB
- Reliable, high quality design
- Designed for karaoke games
- 15 foot cable



Logitech®

USB MICROPHONE

Available for purchase online at: www.logitech.com/PS2microphone.

© 2004 Logitech. All rights reserved. Logitech, the Logitech logo and other Logitech marks are owned by Logitech and may be registered. All other trademarks are the property of their respective owners.

KONAMI® and KARAOKE REVOLUTION™ are either registered trademarks or trademarks of KONAMI CORPORATION. © 2003 2004 KONAMI. Developed by Harmonix Music Systems. Harmonix is a registered trademark of Harmonix Music Systems, Inc. U.S. Patents Pending. All rights reserved.

WARRANTY

Konami Digital Entertainment - America warrants to the original purchaser of this Konami software product that the medium on which this computer program is recorded is free from defects in materials and workmanship for a period of ninety (90) days from the date of purchase. This Konami product is sold "as is," without express or implied warranty of any kind, and Konami is not liable for any losses or damages of any kind resulting from use of this program. Konami agrees for a period of ninety (90) days to either repair or replace, at its option, free of charge, any Konami product, postage paid, with proof of date of purchase, at its Factory Service Center. This warranty is not applicable to normal wear and tear. This warranty shall not be applicable and shall be void if the defect in the Konami software product has arisen through abuse, unreasonable use, mistreatment, or neglect.

THIS WARRANTY IS IN LIEU OF ALL OTHER WARRANTIES AND NO OTHER REPRESENTATIONS OR CLAIMS OF ANY NATURE SHALL BE BINDING ON OR OBLIGATE KONAMI. ANY IMPLIED WARRANTIES APPLICABLE TO THIS SOFTWARE PRODUCT, INCLUDING WARRANTIES OF MERCHANTABILITY AND FITNESS FOR A PARTICULAR PURPOSE, ARE LIMITED TO THE NINETY (90) DAY PERIOD DESCRIBED ABOVE. IN NO EVENT WILL KONAMI BE LIABLE FOR ANY SPECIAL INCIDENTAL OR CONSEQUENTIAL DAMAGES RESULTING FROM POSSESSION, USE OR MALFUNCTION OF THIS KONAMI PRODUCT.

Some states do not allow limitations as to how long an implied warranty lasts and/or exclusions or limitations of incidental or consequential damages so the above limitations and/or exclusions of liability may not apply to you. This warranty gives you specific rights, and you may also have other rights which vary from state to state.

If you experience technical problems with your game, please call our Warranty Services number at (650) 654-5687.

Konami Digital Entertainment - America
1400 Bridge Parkway
Redwood City, CA 94065

CONSUMER SUPPORT

If you feel stuck in the game, or just need a boost, don't worry! You can call the Konami Game Hint & Tip Line for help on many Konami games.

Konami Game Hint & Tip Line: 1-650-801-0465

Hints are available 24 hours a day. Availability is subject to change.

Become a

KONAMI

Insider

Go to www.konami.com/usa to register your KONAMI games and get exciting news and information from KONAMI.

When you register your game you will be automatically entered into monthly drawings to win FREE games!

For warranty information regarding Logitech microphones and headsets, please contact 702-269-3614