



THE LORD OF THE RINGS

THE RETURN OF THE KING™

TEEN
T
CONTENT RATED BY
ESRB

EmuMovies




NEW LINE CINEMA
An AOL Time Warner Company

**WARNING: READ BEFORE USING YOUR PLAYSTATION®2
COMPUTER ENTERTAINMENT SYSTEM.**

A very small percentage of individuals may experience epileptic seizures when exposed to certain light patterns or flashing lights. Exposure to certain patterns or backgrounds on a television screen or while playing video games, including games played on the PlayStation 2 console, may induce an epileptic seizure in these individuals. Certain conditions may induce previously undetected epileptic symptoms even in persons who have no history of prior seizures or epilepsy. If you, or anyone in your family, has an epileptic condition, consult your physician prior to playing. If you experience any of the following symptoms while playing a video game—dizziness, altered vision, eye or muscle twitches, loss of awareness, disorientation, any involuntary movement, or convulsions—IMMEDIATELY discontinue use and consult your physician before resuming play.

WARNING TO OWNERS OF PROJECTION TELEVISIONS:

Do not connect your PlayStation 2 console to a projection TV without first consulting the user manual for your projection TV, unless it is of the LCD type. Otherwise, it may permanently damage your TV screen.

USE OF UNAUTHORIZED PRODUCT:

The use of software or peripherals not authorized by Sony Computer Entertainment America may damage your console and/or invalidate your warranty. Only official or licensed peripherals should be used in the controller ports or MEMORY CARD slots.

HANDLING YOUR PLAYSTATION 2 FORMAT DISC:

- ❖ This disc is intended for use only with PlayStation 2 consoles with the NTSC U/C designation.
- ❖ Do not bend it, crush it, or submerge it in liquids.
- ❖ Do not leave it in direct sunlight or near a radiator or other source of heat.
- ❖ Be sure to take an occasional rest break during extended play.
- ❖ Keep this compact disc clean. Always hold the disc by the edges and keep it in its protective case when not in use. Clean the disc with a lint-free, soft, dry cloth, wiping in straight lines from center to outer edge. Never use solvents or abrasive cleaners.

This product has been rated by the Entertainment Software Rating Board. For information about the ESRB rating, or to comment about the appropriateness of the rating, please contact the ESRB at 1-800-771-3772.

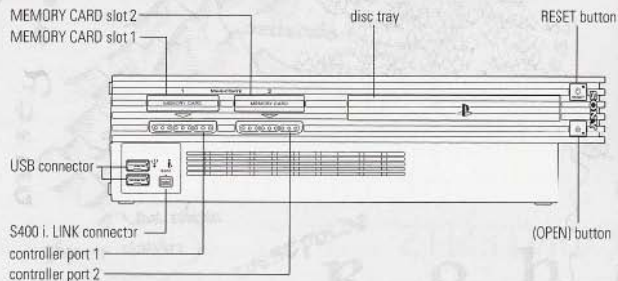
THE
**LORD
OF THE
RINGS**
THE RETURN
OF THE KING

CONTENTS

GETTING STARTED	2
COMMAND REFERENCE	3
COMPLETE CONTROLS	4
ATTACKS	5
COMBOS	5
INTRODUCTION	6
THE JOURNEY CONTINUES	7
MAIN MENU	7
OPTIONS	9
PLAYING THE GAME	10
GAMEPLAY SCREEN	10
PAUSE MENU	11
COMPLETING YOUR TASK	11
COOPERATIVE MULTIPLAYER	13
COOPERATIVE GAMEPLAY	13
ONLINE MULTIPLAYER	13
HEROES	19
SAVING AND LOADING	22
LIMITED 90-DAY WARRANTY	23

GETTING STARTED

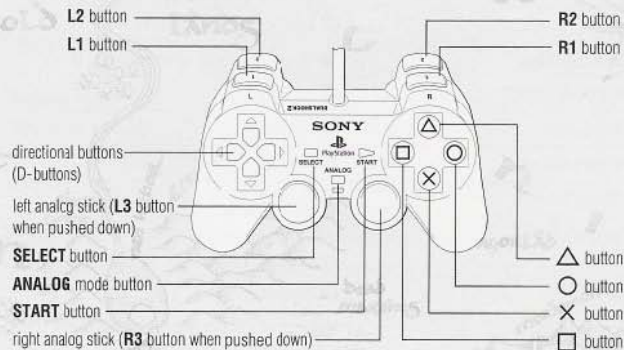
PLAYSTATION®2 COMPUTER ENTERTAINMENT SYSTEM



1. Set up your PlayStation®2 computer entertainment system according to the instructions in its Instruction Manual.
2. Make sure the MAIN POWER switch (located at the back of the console) is turned on.
3. Press the RESET button. When the power indicator lights up, press the open button and the disc tray will open.
4. Place the *The Lord of the Rings®: The Return of the King™* disc on the disc tray with the label side facing up. Press the open button again and the disc tray will close.
5. Attach game controllers and other peripherals, as appropriate.
6. Follow on-screen instructions and refer to this manual for information on using the software.

COMMAND REFERENCE

DUALSHOCK®2 ANALOG CONTROLLER CONFIGURATIONS



COMPLETE CONTROLS

GAMEPLAY CONTROLS

Move	left analog stick
Speed Attack	⊗ button or right analog stick ⇄
Fierce Attack	△ button or right analog stick ⇄
Physical Attack	⊙ button
Parry	⊞ button
Action Button	R1 button
Killing Move	R2 button
Ranged Attack	Hold the L1 button to activate the ranged attack, then press the ⊗ button to fire
Jump Back	L2 button
Special Ability	R1 button + R2 button + L1 button + L2 button
Pause Game	START button

NOTE: The longer you press the L1 button and the ⊗ button, the more power your ranged attack has.

MENU CONTROLS

Highlight menu items	D-button ⇄
Cycle choices/Move sliders	D-button ⇄
Select/Go to next screen	⊗ button
Return to previous screen	△ button
View level info	⊙ button (Level Select screen only)
Help	⊞ button

ATTACKS

Use these basic attacks to defeat even the fiercest foes.

Speed Attack	Take a very quick swipe at your foe.
Fierce Attack	Strike with a solid blow that can shatter the stoutest shield.
Ranged Attack	Fire an arrow, throw an axe, or shoot with your staff by activating your ranged weapon.
Killing Move	Finish off a fallen enemy with this fatal blow.
Physical Attack	Attack an enemy with a punch, kick, or a push to the ground.
Parry	Defend yourself against enemy attacks and arrows with a well-timed parry.
Jump Back	Escape painful blows by jumping out of harm's way.
Action Button	Perform actions such as firing catapults, raising drawbridges, or picking up war pikes.
Special Ability	Activates the unique ability each character possesses.

COMBOS

Your character begins the game with two simple combination moves.

SPEED COMBO ⊗ button, ⊗ button, ⊗ button.

FIERCE COMBO △ button, △ button.

- ◆ Many advanced moves can be purchased as upgrades.
- ◆ When some combos are successfully executed, the power of the attack harms all enemies in the immediate area, often knocking them down.

Orc Bane Successful Parry then press the R2 button.

Orc Hewer ⊗ button ⊗ button, △ button.

Ranger Fury △ button (hold and release).

NOTE: These attacks must be purchased with experience points before they are available for use.

ORC BANE

A Linked Attack instantly kills an enemy, but must begin with a successful parry.

ORC HEWER

An effective combo for taking out unshielded foes.

RANGER FURY

Press and hold the △ button or the right analog stick ⇄. This attack takes time, and your character remains in place while charging up the necessary power to pull it off. Once fully charged, let go of the △ button or right analog stick to unleash the attack.

INTRODUCTION

The Fellowship of the Ring formed to save Middle-earth from the treacherous power of The One Ring. From the Council of Elrond in Rivendell they set forth on their journey towards Mordor to destroy The One Ring in the fires of Mount Doom. Many challenges assailed the Fellowship, from Ringwraiths to legions of Orcs to the fearsome Balrog that took the great wizard Gandalf the Grey from their ranks. However, hope ultimately prevailed and the Fellowship kept true to its path.

That is, until the Fellowship split apart as they neared the dangers of Mordor. In the forests of Fangorn, Aragorn, Legolas, and Gimli met up once again with a reborn Gandalf the White and traveled to the lands of Rohan. There, a great battle occurred at Helm's Deep between men and the wizard Saruman's forces of evil. To the East, the hobbits Frodo and Sam searched for a way into Mordor with the destruction of The One Ring in the forefront of their minds.

As the hobbits draw closer to Mount Doom, Aragorn, Gimli, Legolas, and Gandalf travel by various roads to Gondor to aid the men of Middle-earth in preparing a desperate last stand against the unspeakable forces of evil. Against the gates of Minas Tirith, they expect Sauron to unleash thousands of troops to quickly snuff out the hopes of all free people. To withstand the unrelenting forces of Sauron, the members of the Fellowship know the destruction of The One Ring is the only thing that can save them. Will Gondor prevail? Will Frodo and Sam make it to the fires of Mount Doom? In this final chapter of *The Lord of the Rings*, the fate of Middle-earth is in your hands.

For more info about this and other titles, visit EA GAMES™ on the web at www.eagames.com.

THE JOURNEY CONTINUES

Where will you go and what might you encounter along the way? Choose a character and set out upon your quest.

MAIN MENU

Enter into single or multiplayer battles from the Main menu.

NOTE: If no game has been saved, you must first successfully complete the Helm's Deep level to access the Main menu.



SINGLE PLAYER

Defeat Sauron's minions in a series of single-player levels.

CO-OP

Team up with a friend to defend Middle-earth cooperatively.

OPTIONS

Adjust volume, subtitle, vibration, and difficulty settings.

CREDITS

View the game's credits.

ONLINE

Fight cooperatively with a friend over an Internet connection.

To start a single player game:

1. Select SINGLE PLAYER in the Main menu. The Single Player menu appears.
 2. Select NEW GAME in the Single Player menu. The Difficulty Select screen appears.
 3. Select a difficulty level – EASY, **NORMAL**, or HARD – and press the **X** button. The battle for Helm's Deep begins automatically.
- For more information on cooperative and online gameplay, > *Multiplayer* on p. 13.

LEVEL SELECTION

Choose your level and enter into the fray. There are three story paths you may choose. The center path (The Path of the King) in the Level Selection screen is for Aragorn, Legolas, and Gimli. The right-hand path (The Path of the Hobbits) is for Frodo and Sam. The left-hand path (The Path of the Wizard) is for Gandalf. The level you chose determines which characters you can play in order to complete the level.

- ❖ Once you have successfully completed the battle for Helm's Deep, the Level Selection screen appears.
- To select a level, highlight it and press the **X** button.
- ❖ Unlock new level by winning the previous level.
- ❖ Once you complete the full game, you are able to replay a level as any of the characters.
- ❖ Many extras are also available from the Level Selection screen, including interviews and secret levels. The more you achieve in the game, the more you unlock.

CHARACTER SELECTION

There are three character paths. The path you choose determines which characters you may play in a given level.

- ❖ Once you have chosen a level, the Character Selection screen appears.
- To cycle through available characters, press the D-button **↔**.
- To select a highlighted character, press the **X** button.

NOTE: Only characters that are highlighted can be selected.

- ❖ Hidden characters are unlocked as you advance through the game.

OPTIONS

Adjust sound, controller, and difficulty settings from the Options menu.

- To access the Options menu, select **OPTIONS** in the Main menu and press the **X** button.

MUSIC VOLUME Make the background music louder or softer.

VOICEOVER VOLUME Adjust the volume of the character's voices.

SUBTITLES Turn in-game subtitles **ON** or **OFF**.

VIBRATION Turn the controller vibration feature **ON** or **OFF**.

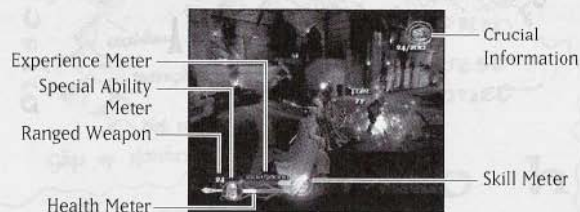
DIFFICULTY Select between **EASY**, **NORMAL**, or **HARD**.

PLAYING THE GAME

To defeat Sauron's evil forces, you must use all the cunning, courage, and talents at your disposal.

GAMEPLAY SCREEN

Mastering the gameplay screen is the first step towards saving Middle-earth.



Health Meter

As you take damage, your Health Meter depletes. When the bar is completely empty, you are defeated.

Experience Meter

Experience points are awarded each time you defeat an enemy. This allows you to gain levels and access more powerful skills.

Special Ability Meter

You can use your character's Special Ability by pressing the **L1**, **L2**, **R1**, and **R2** buttons simultaneously. The special ability will be active for a short period of time (the character icon will begin to white out). You will need to wait for the ability to recharge, when the character icon is in full color, before using it again.

Ranged Weapon

As you use your ranged weapon, this number will decrease until more ammunition is picked up.

Skill Meter

Earn higher ratings and experience points by stringing together successful hits. These experience points can be redeemed for upgrades. There are four ratings: Fair, Good, Excellent, and Perfect. If the Perfect rating is achieved, all your attacks cause additional damage for a brief period of time and the experience received for each kill is doubled.

Crucial Information

One or more gauges can appear in the upper right hand corner of the screen. These gauges can represent things like the paths you must take, tasks you must accomplish, or enemies you must slay.

- ❖ Parrying is a vital part of swordplay. It deflects incoming arrows, prevents damage if outnumbered, and when done successfully, allows you to perform instant killing moves.
- ❖ Jumping back from enemies can help you keep the health you already have.
- ❖ Walking over potions can restore lost health.

PAUSE MENU

Even the fiercest warrior needs a break from battle.

- To pause the game mid-battle, press the **START** button.

Resume

Continue gameplay where you left off.

Mission Tips

Get tips and advice on completing the level.

Show Upgrades

See a list of your current upgrades.

Options

Access sound, controller vibration, and difficulty settings.

Exit to Menu

Quit the current level and return to the Level Selection screen.

COMPLETING YOUR TASK

Determine how well you completed your level's objectives.

SCORING RESULTS SCREEN

At the end of each level, this screen summarizes your accomplishments.



- ❖ Completing a level gains you experience points. These are redeemable for new skills and abilities.
- To accept your earned experience points and move on to the Upgrades screen, select **CONTINUE** and press the **X** button.
- To replay the last level, select **REPLAY** and press the **X** button.

NOTE: You can always replay a level later by selecting it from the Level Selection screen (➤ p. 8).

UPGRADES

Improve your skills by spending your acquired experience points.



- To scroll through the list of possible upgrades, press the D-button \updownarrow . The skills, and the experience points required to obtain them, are highlighted.
- To toggle between Fellowship upgrades and Character upgrades, highlight either by pressing the D-button \leftrightarrow .
- ❖ Upgrades are purchased based on experience level. If a character wishes to purchase an upgrade, he must reach the experience level required by that upgrade in order to do so.
- ❖ Fellowship upgrades benefit all playable characters that have reached the experience level required by the upgrade. Character upgrades benefit only the character it was intended for.
- ❖ When a Fellowship upgrade is purchased, each member of the Fellowship must reach the indicated level before they can use it.
- To purchase an upgrade, highlight it and press the \otimes button. A prompt appears asking if you wish to confirm your selection. Select YES and press the \otimes button. The skill is upgraded.
- ❖ Be sure you have enough experience points to afford a desired skill.

COOPERATIVE MULTIPLAYER

Form your own Fellowship with a friend and defend Middle-earth.

COOPERATIVE GAMEPLAY

Fight cooperatively with a friend.

To start a cooperative multiplayer game:

1. Select CO-OP in the Main menu. The Co-op menu appears.
 2. Select NEW GAME in the Co-op menu and press the \otimes button. The Level Selection screen appears.
 3. Select a difficulty level — EASY, **NORMAL**, or HARD — and press the \otimes button.
 4. Choose the level you wish to play and press the \otimes button. The Character Selection screen appears.
 5. Select the character for player one, then select the character for player two. Gameplay begins.
- To toggle ON or OFF the 1P and 2P player indicators during cooperative gameplay, press the **SELECT** button.
 - ❖ In cooperative gameplay, the game is over only when both characters have died or one character dies after all available re-spawns have been used up.

ONLINE MULTIPLAYER

Form your own Fellowship with friends via the Internet.

To access online gameplay:

1. Select ONLINE in the Main menu. The Online menu appears.
2. Select a game save and press the \otimes button. Your upgraded characters and unlocked levels are available for online play.

NOTE: You must have a saved game in order to play *The Lord of the Rings: The Return of the King* online.

NOTE: IMPORTANT INFORMATION ON *THE LORD OF THE RINGS: THE RETURN OF THE KING* ONLINE SERVICE, INCLUDING AVAILABILITY FOR PLAY, TERMS AND CONDITIONS, AND MEMBERSHIP AGREEMENT CAN BE FOUND AT [HTTP://WWW.EAGAMES.COM](http://www.eagames.com). EA RESERVES THE RIGHT TO RETIRE *THE LORD OF THE RINGS: THE RETURN OF THE KING* ONLINE SERVICE FOR THIS PRODUCT AFTER 90 DAYS NOTICE.

This software uses "DNAS" (Dynamic Network Authentication System), a proprietary authentication system created by Sony Computer Entertainment Inc. ("SCEI"). "DNAS" retrieves information about user's hardware and software for authentication, copy protection, account blocking, system, rules, or game management and other purposes. The information collected does not identify the user personally. **A Publisher can combine this information with personally identifying information from the Publisher's records if the user provides the personally identifying information. Before providing any personal information to a Publisher please be sure to review the Publisher's privacy policy and terms and conditions of use. Do not provide personally identifying information to a**

Publisher unless you accept the conditions of use and terms of their privacy policy. SCEI, Sony Computer Entertainment America ("SCEA") and their affiliates cannot guarantee the continuous operation of the "DNAS" servers. SCEA shall not be liable for any delay or failure of the "DNAS" servers to perform. If you receive a message during login identifying a "DNAS" authentication error, please contact SCEA Consumer Services at 1-866-466-5333. For additional information concerning "DNAS", visit www.us.playstation.com/DNAS. In the event of the systems incompatibility or inoperability with DNAS, the sole liability of SCEI, SCEA and their affiliates shall be limited to the repair or replacement of the user's affected game software, console, or peripherals at the option of SCEA. SCEA, its parents, affiliates, or licensed Publishers shall not be liable for any delays, systems failures, authentication failures, or system outages, which may, from time to time, affect online game play or access thereto.

SELECT NETWORK CONFIGURATION

NOTE: To play online, you must own and install a Network Adaptor (Ethernet/Modem) (for PlayStation®2), an active Internet service provider (ISP) account, and a memory card (8 MB) (for PlayStation®2) with at least 256KB free space.

Before you can begin playing online, you must select Your Network Configuration file (found on your memory card) or create a new one through the included Network Configuration GUI.

NOTE: After using the included Network Configuration GUI, the RESET button functions differently in *The Lord of the Rings: The Return of the King*. To put the console into standby mode press and hold the RESET button until the LED indicates a red color.

NETWORK CONFIGURATION FILE

Press the D-button ⇄ to scroll through the available Internet service provider settings and select one for the upcoming Online game.

NOTE: *The Lord of the Rings: The Return of the King* is compatible with broadband only.

CREATE NEW/EDIT INTERNET SERVICE PROVIDER SETTINGS

The Network Configuration GUI allows you to create and edit Your Network Configuration file. When selected, the game shuts down while the Network Configuration GUI is loaded. When complete, the game re-launches itself.

CONNECT

After selecting an Internet service provider setting, the game connects to your Internet service provider. If the connection is successful, the *The Lord of the Rings: The Return of the King* Server Login screen appears.

ACCOUNT SETUP

Before you play online, you must first register for an EA Online account.

- If you have already created an account, press the D-button, highlight your existing EA Online account and then press the ⓧ button.

NOTE: *The Lord of the Rings: The Return of the King* supports a USB keyboard for entering account data and for communicating with other players while you are in the Game Lobby.

To create an account:

1. Select Create New EA Online Account from the Select EA Online Account menu and press the ⓧ button. The Setup New Account screen appears.
2. Select Account Name and press the ⓧ button to access the keyboard. The keyboard screen appears.
3. Enter your name by pressing the D-button to choose a letter and pressing the ⓧ button. When you are finished typing your name, select DONE and press the ⓧ button to confirm. The Setup New Account screen appears.
4. Select PASSWORD and press the ⓧ button. The Password screen appears.
5. Enter your password by pressing the D-button to choose a letter and pressing the ⓧ button. When you are finished typing your password, select DONE and press the ⓧ button to confirm. The Setup New Account screen appears.
6. Select CONFIRM PASSWORD and press the ⓧ button. The Confirm Password screen appears.
7. Enter your password again by pressing the D-button to choose a letter and pressing the ⓧ button. When you are finished, select DONE and press the ⓧ button to confirm. The Setup New Account screen appears.
8. Select SAVE and press the D-button ⇄ to choose to save your ACCOUNT NAME ONLY, YOUR NAME AND PASSWORD, or NO.
9. Select CONTINUE and press the ⓧ button. The SETUP NEW ACCOUNT (PART 2 OF 3) screen appears.
10. Select EMAIL ADDRESS and press the ⓧ button. The Enter E-mail Address screen appears.
11. Enter your email address by pressing the D-button to choose a letter and pressing the ⓧ button. When you are finished, select DONE and press the ⓧ button to confirm.
12. Press the D-button ⇄ to select the month, day, and year of your birth date and your gender. Select CONTINUE and press the ⓧ button to continue.
13. Press the D-button ⇄ to confirm that you've read the Terms of Service Agreement, select whether or not you wish to receive e-mails from EA GAMES, and whether or not you wish to share your info with premium EA game content partners. Select REGISTER and press the ⓧ button. Your account is created.

ACCESSING THE ONLINE MAIN MENU WITH AN EXISTING EA ACCOUNT

To access the Online Main menu using your default EA Account:

1. From the Main menu, select ONLINE and press the ⓧ button. Select a game to load and press the ⓧ button. The Select Network Configuration screen appears.
2. Select an Internet service provider setting and press the ⓧ button. The Select EA Online Account screen appears with any previously saved EA Accounts displayed.

3. Select USE and press the **X** button.
4. Enter your password if it was not saved, select DONE and press the **X** button. Your EA Account is loaded and the Select Online Profile Name screen appears.
 - Your EA Account only defaults once you've saved it.

To select a different EA Account:

1. From the Main menu, select ONLINE and press the **X** button. Select a game to load and press the **X** button. The Select Network Configuration screen appears.
2. Select an Internet service provider setting and press the **X** button. The Select EA Online Account screen appears.
3. Select Use Existing EA Online Account and press the **X** button. The Use Existing Account screen appears.
4. Select ACCOUNT NAME and press the **X** button. The Keyboard appears.
5. Enter your name by pressing the D-button \leftrightarrow to choose a letter and pressing the **X** button. When you are finished typing, select DONE and press the **X** button to confirm. The Use Existing Account screen appears.
6. Select PASSWORD and press the **X** button. The Keyboard appears.
7. Enter your password by pressing the D-button to choose a letter and pressing the **X** button. When you are finished typing, select DONE and press the **X** button to confirm. The Use Existing Account screen appears.
8. Select LOGIN press the **X** button. You are logged in and the Online Main menu appears.

About Your Online Profile Name

While in the Online Lobby, you are identified by your Online Profile Name. This name is different from the EA Account name and is set up as part of the login process. Each EA Account can have up to four online profiles. The first time you login, you will be asked to create a new online profile.

- If you have already created a profile, press the D-button \leftrightarrow to highlight your profile, and then press the **X** button.

To create a new Online Profile Name:

1. Select PROFILE NAME (if creating your first profile) or NEW and press the **X** button.
2. Enter your profile name by pressing the D-button to choose a letter and pressing the **X** button. When you are finished typing, select DONE and press the **X** button to confirm.

NOTE: The first character of your Online Profile Name must be a letter.

3. Select REGISTER and press the **X** button to create the profile.

ONLINE MAIN MENU

- Instant Matchup** Instantly join an online multiplayer game with the next available player.
- Matchup Lobbies** Select a level and a character and enter into multiplayer gameplay.
- News** Get news on *The Lord of the Rings: The Return of the King* online community.

- ❖ Experience gained online does not benefit your single-player campaign.

NOTE: In order to play online your console will form a connection to the console of the user that you are playing with. If you have a router or firewall you may not be able to connect. If you experience problems you may need to open UDP port 3658 to Internet traffic. Please note that opening up any port in your router or firewall could compromise the internal security of your network.

INSTANT MATCHUP

Don't want to wait too long to play online? Select Instant Matchup.

To play an Instant Matchup game:

- Select INSTANT MATCHUP in the Online Main menu and press the **X** button. The game checks the server for a suitable matchup partner and gameplay begins.

MATCHUP LOBBIES

Enter a room and forge a new Fellowship.



- ❖ In a game lobby, you can review each player's connection and game information before sending messages or challenges. Next to each player's name, you can see a set of lights. Each light represents a player's connection speed to the Internet. A player with more lights has a faster connection. Green indicates a fast connection while yellow and red suggest a slower connection.

To start a game:

1. Select **MATCHUP LOBBIES** in the Online Main menu and press the **X** button.
2. Select an online game room by pressing the D-button to scroll through the Room List and then press the **X** button to join the room.
 - To create your own room, press the **SELECT** button. Enter the name of the room, and give it a password if needed. To create the room, highlight **REGISTER** and press **X** button.
3. Invite a player to join you in a multiplayer game by pressing the **X** button on his or her name, choosing invite, and pressing the **X** button. Select a level by pressing the D-button \leftrightarrow . Then press the D-button \downarrow and select your character by pressing the D-button \leftrightarrow . Then select **INVITE** and press the **X** button. Once the other player accepts, gameplay begins.

EA Messenger

Find your friends online—or discover new ones.

- To open your EA Messenger, press the **Y** button.
- To find a user in EA Messenger, press the **SELECT** button.
- To send a message to a buddy, highlight their name and press the **R3** button.

To add a new buddy to your buddy list, find the buddy or while in a game room, select their name, then press the **X** button. Select **ADD BUDDY** and press the **X** button.

VOICE OVER IP

If you own a supported USB headset, you can talk with your friends while engaging in multiplayer online play.

- To access voice over IP, connect your USB headset. Voice over IP capability is always on by default.
- To toggle the microphone ON or OFF, press the **R3** button.
- ❖ Users with a supported USB headset are indicated by display text in the lobby.

NOTE: The headset is active only when in-game, not while in the online lobby.

AN INTERNET CONNECTION IS REQUIRED FOR THIS FEATURE.

Online features for *The Lord of the Rings: The Return of the King* subject to online Membership Agreement. EA reserves the right to terminate the online features for this product after 90 days notice.

YOU MUST BE 13+ TO REGISTER FOR THE EA ONLINE SERVICE.

HEROES

Get to know the members of the Fellowship.

GANDALF

Gandalf knows that desperate plans are required as the specter of darkness grows over Middle-earth and Sauron's armies issue forth from Mordor to destroy the world of Men. The White Wizard liberates Rohan and the war is turned toward Minas Tirith, the last great stronghold of free people, where he intends to distract Sauron's gaze with a final, bold defense.

As an advisor of Men, Gandalf musters the defenses of Gondor to stand firm in the face of darkness. As a warrior on the battlefield, Gandalf conjures shockwaves with his staff to knock enemies aside and then with his sword, he slays them with ease. But victory cannot be won by force of arms alone, and Gandalf's plans are meant to buy time, knowing all hope rests in the success of Frodo's quest.



ARAGORN

As the last descendant of the Kings of Men, Aragorn is fated to claim the long-empty throne of Gondor, should he prove worthy of this task. But to fulfill his destiny, Aragorn must first pass through the Paths of the Dead and attempt to command horrible foes who once betrayed Gondor. Then he must return to Minas Tirith and fight Sauron's hoard in defense of this besieged city. And, should he survive this path, Aragorn must at last face The Dark Lord's servants before the very gates of Mordor.

As a Ranger and Elf friend, Aragorn's ability with the bow allows him to defeat opponents at long range. His true prowess, however, lies in close combat. Wielding a reforged Narsil, the legendary sword that defeated Sauron, Aragorn is a deadly combatant on the battlefield, easily defeating multiple foes.



LEGOLAS

Although the Fellowship that set forth from Rivendell has been divided, still the friendship that binds these comrades together holds true. In support of Aragorn, Legolas and Gimli fight beside each other through hardship and peril, despite their differences. Yet their greatest challenges are yet to come, as they enter this war alone and vastly outnumbered.

As a fighter, Legolas' skill with matched blades has won him the respect of his friends. But it is the bow of Legolas that will often turn the tide of battle, his deadly accuracy stopping foes in their tracks. Legolas risks his immortality in the cause of all free Men, and he will not permit Aragorn or Gimli to go on without him – to whatever end.

GIMLI

As sturdy in spirit as he is in stature, Gimli the Dwarf is a formidable warrior. His skill with his weapons and his unflappable spirit earn for him a strong and unlikely bond with Aragorn and Legolas. Despite the distrust between Elf and Dwarf, all three of these warriors share a deep admiration for each other, forged in the fires of combat.

Armed with axes and the sheer force of his will, Gimli can quickly defeat enemies nearly twice his size. His ferocity in combat is a perfect compliment to the swordplay of Aragorn and the bow skill of Legolas. Together these companions intend to become an unstoppable force, helping Gandalf turn the tide in their war against Sauron.



FRODO

In the final days of the War of the Ring, the fate of all Middle-earth rests in the hands of Frodo Baggins. Now upon the most difficult part of his long journey, Frodo and his trusted companion Sam at last approach the devastated land of Mordor, home of The Dark Lord Sauron. With every step taken toward that fell place, the burden upon Frodo grows heavier.

Relentlessly pursued by Ringwraiths mounted upon huge flying beasts, Frodo and Sam must trust Gollum, if they hope to find safe passage through the encircling Orc forces. While huge armies rage around them, these two small hobbits must never falter, for failure will bring about the ruin of the world.

SAM

Often the unlikely may become the great heroes, and Sam Gamgee is destined to become the greatest hero of all. Every step taken by a weary and worn Frodo brings these two hobbits closer to Mount Doom and the fulfillment of their quest. Sam is always at Frodo's side, his unswerving loyalty and conviction of heart giving them hope, despite the seeming impossibility of their task and the odds against their success.

Sam is a warrior created by necessity, determined, ferocious and deadly despite his small size. His quick thinking and ability to use stealth to his advantage must get him – and Frodo – out of some very tight spots. Yet Sam's greatest strength is his love for his friend and his commitment to see things through.



SAVING AND LOADING

Games can be saved at the end of each level.

NOTE: Never insert or remove a memory card when loading or saving files.

To save a game:

1. Select CONTINUE from the Upgrades screen and press the **X** button. You are prompted to confirm if you wish to save your game.
2. Select YES and press the **X** button. The Memory Card prompt appears.
3. Select the location into which you would like to save your game and press the **X** button. A prompt appears asking if you are sure you want to save to this location.
4. Select YES and press the **X** button. The game is saved.

To load a single player game:

1. Select SINGLE PLAYER in the Main menu and press the **X** button. The Single Player menu appears.
2. Select LOAD GAME in the Single Player menu and press the **X** button. The Load Game screen appears.
3. Select which saved game you wish to continue by highlighting it and pressing the **X** button. The game is resumed.

To load a cooperative multiplayer game:

1. Select CO-OP in the Main menu. The Single Player menu appears.
2. Select LOAD GAME in the Single Player menu. The Load Game screen appears.
3. Select which saved game you wish to continue by highlighting it and pressing the **X** button. The game is resumed.

LIMITED 90-DAY WARRANTY

ELECTRONIC ARTS LIMITED WARRANTY

Electronic Arts warrants to the original purchaser of this product that the recording medium on which the software program(s) are recorded (the "Recording Medium") and the documentation that is included with this product (the "Manual") are free from defects in materials and workmanship for a period of 90 days from the date of purchase. If the Recording Medium or the Manual is found to be defective within 90 days from the date of purchase, Electronic Arts agrees to replace the Recording Medium or Manual free of charge upon receipt of the Recording Medium or Manual at its service center, postage paid, with proof of purchase. This warranty is limited to the Recording Medium containing the software program and the Manual that were originally provided by Electronic Arts. This warranty shall not be applicable and shall be void if, in the judgment of Electronic Arts, the defect has arisen through abuse, mistreatment or neglect.

This limited warranty is in lieu of all other warranties, whether oral or written, express or implied, including any warranty of merchantability or fitness for a particular purpose, and no other representation of any nature shall be binding on or obligate Electronic Arts. If any such warranties are incapable of exclusion, then such warranties applicable to this product, including implied warranties of merchantability and fitness for a particular purpose, are limited to the 90-day period described above. In no event will Electronic Arts be liable for any special, incidental, or consequential damages resulting from possession, use or malfunction of this Electronic Arts product, including damage to property, and to the extent permitted by law, damages for personal injury, even if Electronic Arts has been advised of the possibility of such damages. Some states do not allow limitation as to how long an implied warranty lasts and/or exclusions or limitation of incidental or consequential damages so the above limitations and/or exclusion of liability may not apply to you. In such jurisdictions, the Electronic Arts' liability shall be limited to the fullest extent permitted by law. This warranty gives you specific rights. You may also have other rights that vary from state to state.

RETURNS WITHIN THE 90-DAY WARRANTY PERIOD

Please return the product along with (1) a copy of the original sales receipt, showing the date of purchase, (2) a brief description of the difficulty you are experiencing and (3) your name, address and phone number to the address below and Electronic Arts will mail a replacement Recording Medium and/or Manual to you. If the product was damaged through misuse or accident, this 90-day warranty is rendered void and you will need to follow the instructions for returns after the 90-day warranty period. We strongly recommend that you send your product using a traceable delivery method. Electronic Arts is not responsible for products not in its possession.

RETURNS AFTER THE 90-DAY WARRANTY PERIOD

If the defect in the Recording Medium or Manual resulted from abuse, mistreatment or neglect, or if the Recording Medium or Manual is found to be defective after 90 days from the date of purchase, please return the product along with (1) a check or money order for \$15.00 made payable to Electronic Arts, (2) a brief description of the difficulty you are experiencing and (3) your name, address and phone number to the address below, and Electronic Arts will mail a replacement Recording Medium and/or Manual to you. We strongly recommend that you send your product using a traceable delivery method. Electronic Arts is not responsible for products not in its possession.

EA WARRANTY CONTACT INFO

E-mail and Website: <http://techsupport.ea.com>

Phone: (650) 628-1900

EA WARRANTY MAILING ADDRESS

Electronic Arts Customer Warranty

P.O. Box 9025

Redwood City, CA 94063-9025

NOTICE

Electronic Arts reserves the right to make improvements in the product described in this manual at anytime and without notice. This manual and the product described in this manual are copyrighted. All rights reserved. No part of this manual may be copied, reproduced, translated, or reduced to any electronic medium or machine readable form without prior written consent of Electronic Arts, P.O. Box 9025, Redwood City, California 94063-9025.

NEED A HINT? Call the EA HINTS & INFORMATION HOTLINE for recorded hints, tips, and passwords 24 hours a day, 7 days a week!

In the **US**, dial 900-288-HINT (4468), \$.99 per minute.

In **CANADA**, dial 900-451-4873, \$.99 (Canadian) per minute.

If you are under 18, be sure to get a parent's permission before calling. Hotline requires a touch-tone telephone. Call length determined by user; average length is four minutes. Messages subject to change without notice.

TECHNICAL SUPPORT—If you need technical assistance with this product, call us at (650) 628-4322 Monday through Friday between 8:30–11:45 AM or 1:00–4:30 PM, Pacific Standard Time. **No hints or codes are available from (650) 628-4322. You must call the EA HINTS & INFORMATION HOTLINE for hints, tips, or codes.**

TECHNICAL SUPPORT CONTACT INFO

E-mail and Website: <http://techsupport.ea.com>

Mailing Address: Electronic Arts Technical Support

PO Box 9025

Redwood City Ca 94063-9025

If you live outside of the United States, you can contact one of our other offices.

In **Australia**, contact:

Electronic Arts Pty. Ltd.

P.O. Box 432

Southport Qld 4215, Australia

In the **United Kingdom**, contact:

Electronic Arts Ltd.

P.O. Box 181

Chertsey, KT16 0YL, UK

Phone (0870) 2432435

In **Australia**: For Technical Support and Game Hints and Tips, phone the EA HOTLINE: 1 902 261 600 (95 cents per min.) CTS 7 days a week 10 AM–8 PM. If you are under 18 years of age parental consent required.

© MMIII New Line Productions, Inc. All Rights Reserved. The Lord of the Rings; The Return of the King and the names of the characters, items, events and places therein are trademarks of The Saul Zaentz Company d/b/a Tolkien Enterprises under license to New Line Productions, Inc. Game code and certain audio visual elements © 2003 Electronic Arts Inc. All rights reserved. Electronic Arts, EA GAMES and the EA GAMES logo are trademarks or registered trademarks of Electronic Arts Inc. in the U.S. and/or other countries. All other trademarks are the property of their respective owners. EA GAMES™ is an Electronic Arts™ brand.

Uses Bink Video. Copyright © 1997-2003 by RAD Game Tools, Inc.

This product contains Font Software licensed from Agfa Monotype Corporation and its suppliers, which may not be distributed, copied, reformatted, reverse engineered, or decompiled for any purpose. You may transfer the Font Software as part of the product to a third party provided that (i) the third party agrees to all the terms of this agreement and (ii) you have destroyed all copies of the Font Software in your custody or control, including any installed in your computer, immediately upon transferring such product. The Font Software is also protected by copyright and any copying or distribution of the Font Software, with or without the product, constitutes both copyright infringement and a theft of valuable property. You acquire no right, title or interest in the Font Software except the personal right to use such software, consistent with this agreement, as part of the product when installed in your computer. All rights reserved. To see the Agfa Monotype Corporation complete Font Software End User License Agreement please go to their website www.agfamonotype.com.



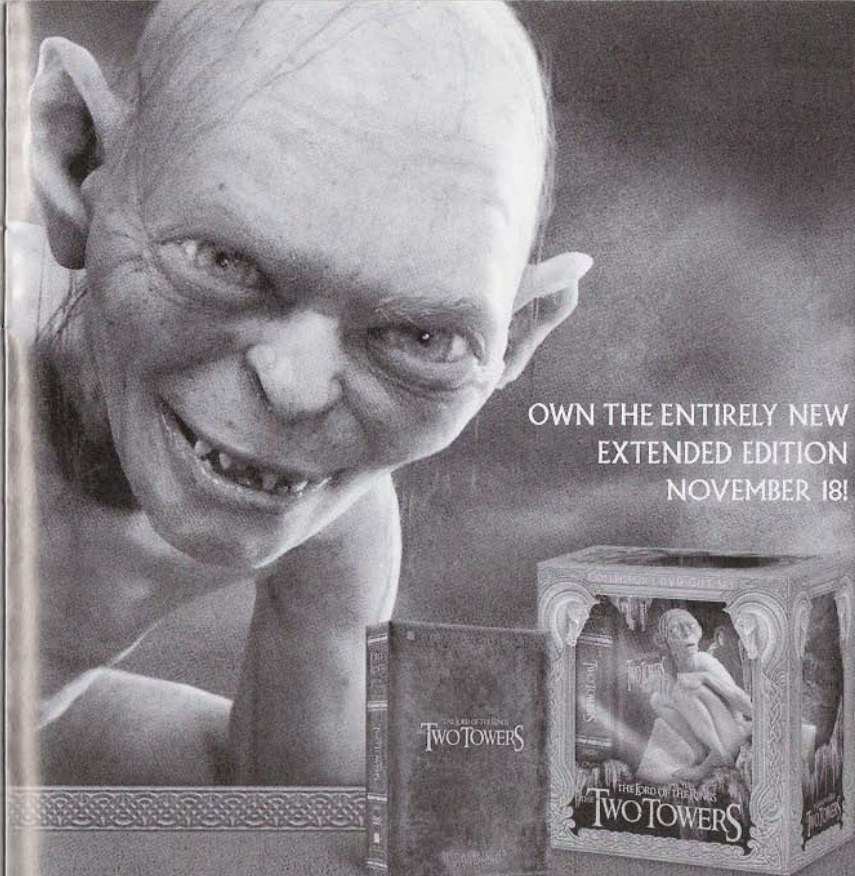
THX is a trademark or registered trademark of THX Ltd. All rights reserved.

A THX Certified Game is your assurance of consistent and optimal sound and picture performance. This game title was developed in a studio that meets THX's stringent reference standards for acoustical and visual performance, letting you enjoy the best in sound and picture playback.

RSA BSAFE® SSL-C and Crypto-C software from RSA Security Inc. have been installed. RSA is a registered trademark of RSA Security Inc. BSAFE is a registered trademark of RSA Security in the United States and other countries. RSA Security Inc. All rights reserved.

This product uses "DNAS" (Dynamic Network Authentication System), a proprietary authentication system created by Sony Computer Entertainment Inc. to provide security and to help protect copyrighted content. The unauthorized transfer, exhibition, export, import or transmission of programs and devices circumventing its authentication scheme may be prohibited by law. For additional information, see www.us.playstation.com/DNAS.

Proof of Purchase
The Lord of the Rings™; The Return of the King™
1468405



OWN THE ENTIRELY NEW
EXTENDED EDITION
NOVEMBER 18!

SPECIAL EXTENDED DVD EDITION*
&
COLLECTOR'S DVD GIFT SET

- 43 Minutes of New and Extended Scenes added by Director Peter Jackson
- 2 Bonus Discs of All-New Features
- Packaging Features Conceptual Sketches by the Film's Artists

AOL Keyword: Lord of the Rings www.lordoftherings.net www.newline.com

© MMIII New Line Productions, Inc. © MMIII New Line Home Entertainment, Inc. The Lord of the Rings, The Two Towers, and the names of the characters, events, items and places therein, are trademarks of The Saul Zaentz Company d/b/a Tolkien Enterprises under license to New Line Productions, Inc. All Rights Reserved.



PG-13
Epic Battle Violence and Some Scarier Images

Supplemental material not rated.

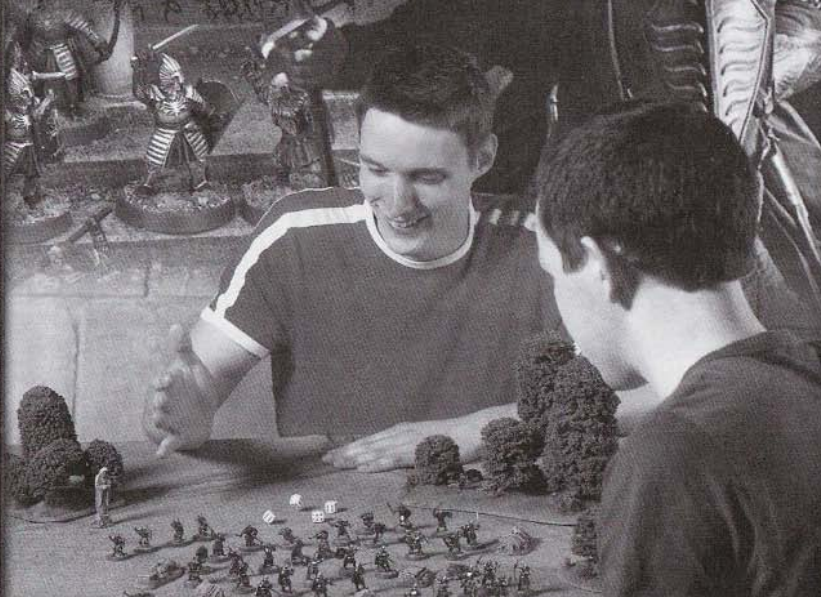
* ALSO AVAILABLE ON VHS



ORIGINAL THEATRICAL VERSION
NOW AVAILABLE ON DVD AND VHS!

THE LORD OF THE RINGS

THE RETURN OF THE KING
STRATEGY BATTLE GAME



BATTLE GAMES IN THE WORLD OF MIDDLE-EARTH

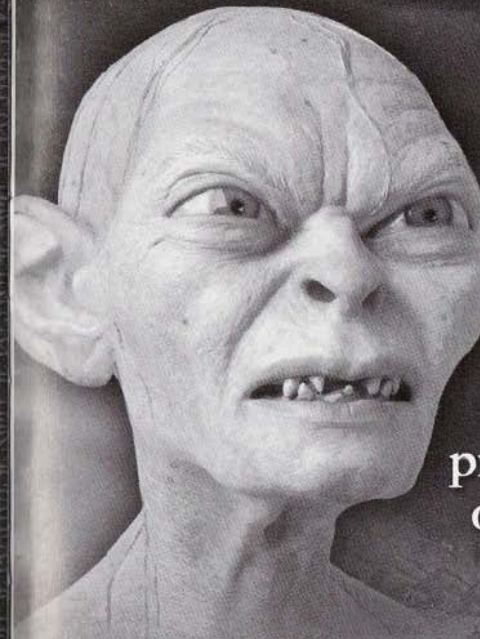
USA: www.games-workshop.com/lotr Canada: www.games-workshop.ca/lotr

© MMIII New Line Productions, Inc. All Rights Reserved. "The Lord of the Rings" and the names of the characters, items, events and places therein are trademarks of The Saul Zaentz Company d/b/a Tolkien Enterprises under license to New Line Productions, Inc. Games Workshop and the Games Workshop Logo are trademarks of Games Workshop Limited variably registered in the UK and other territories. All Rights Reserved.

NEW LINE CINEMA
AN AOL TIME WARNER COMPANY

GAMES WORKSHOP®

THE LORD OF THE RINGS
THE RETURN OF THE KING



So what makes this precious little piece of paper different from the rest?

With this you can get

15% Off

on authentic The Lord of the Rings™ collectibles made by Weta Workshop, the special effects company that helped bring Middle-earth to life on film.

Visit SideshowWeta.com

and use the e-coupon: ROTKEA on your next order!

Or Call (800) 474 - 3746

Offer expires 2/29/04. This 15% savings applies only to Sideshow Weta's The Lord of the Rings™ collectible items. Void where prohibited. Coupon can not be redeemed for cash value or for cash differences. Not valid in combination or with other coupons.

© MMIII New Line Productions, Inc. All rights reserved. "The Lord of the Rings, The Return of the King and the name of the characters, events, items and places therein, are trademarks of the Saul Zaentz Company d/b/a Tolkien Enterprises under license to New Line Productions, Inc." Manufactured by Sideshow, Inc and Weta Workshop, Ltd. All rights reserved.

Sideshow
WETA
COLLECTIBLES

NEW LINE CINEMA
An AOL Time Warner Company

0740 HOURS

December 7, 1941

An Epic Single-Player Adventure

- Survive Pearl Harbor to fight through the jungles of Guadalcanal, the streets of Singapore, and other battlegrounds of the Pacific.

Over 20 Authentic WWII Weapons

Intense Multiplayer Combat

- Blast away in the all-new co-op mode.
- Wage war as either side in rampaging 4-player battles.

All-Out Online Warfare

- Battle it out in Free-For-All and Team Combat modes.
- Lead your squad to victory with Voice Chat Communications.

THX Certified Sound Design

MEDAL OF HONOR RISING SUN

YOU DON'T PLAY, YOU VOLUNTEER.



PlayStation 2



Electronic Arts Inc. 209 Redwood Shores Parkway, Redwood City, CA 94065.

© 2003 Electronic Arts Inc. Electronic Arts, EA, EA GAMES, the EA GAMES logo and "You Don't Play, You Volunteer" are trademarks or registered trademarks of Electronic Arts Inc. in the U.S. and/or other countries. Medal of Honor is a trademark or registered trademark of Electronic Arts Inc. in the U.S. and/or other countries for computer and video game products. All Rights Reserved. All other trademarks are the property of their respective owners. EA GAMES™ is an Electronic Arts™ brand. 1468405

Licensed by Sony Computer Entertainment America for play on the PlayStation 2 computer entertainment systems with the NTSC U/C designation only. "PlayStation" and the "PS" Family logo are registered trademarks of Sony Computer Entertainment Inc. The ratings icon is a trademark of the Interactive Digital Software Association. Manufactured and printed in the U.S.A.



Violence