



PlayStation®

NTSC U/C

PlayStation®

MATURE

M

CONTENT RATED BY  
ESRB

SLUS-00662/  
00668/90028

[ parasite eve ]

TM

SQUARESOFT®

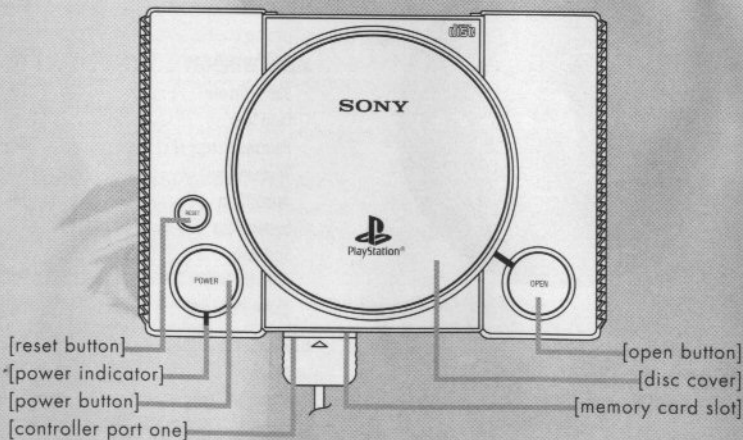
# [contents] [1]



<b>GETTING STARTED</b> .....	2
Memory Card .....	2
<b>CONTROLS</b> .....	3
<b>INTRODUCTION</b> .....	5
<b>CAST</b> .....	6
<b>SAVING &amp; LOADING</b> .....	8
Saving Data .....	8
Continuing From Saved Data .....	8
<b>BEGINNING A GAME</b> .....	9
Field .....	9
World Map .....	9

<b>MENU WINDOW</b> .....	10
Status Screen .....	10
Item Icon .....	10
Parasite Energy (PE) Icon .....	11
Weapon Icon .....	11
Armor Icon .....	11
System Icon .....	12
Sort Icon .....	12
Tune-Up Icon .....	12
Bonus Point Icon .....	13
<b>BATTLE</b> .....	14
Attacking .....	14
Abnormal Status .....	15
<b>USING PARASITE ENERGY</b> .....	16
<b>AFTER A BATTLE</b> .....	17
<b>WEAPONS</b> .....	18
<b>ARMOR</b> .....	19
<b>ITEMS</b> .....	20
<b>DEMO DISC INSTRUCTIONS</b> .....	22
<b>CREDITS</b> .....	24
<b>LIMITED WARRANTY</b> .....	25

## [ 2 ] [getting started]



Set up your PlayStation® game console according to the instructions in its Instruction Manual. Make sure the power is OFF before inserting or removing a compact disc. Insert **Parasite Eve™ Disc 1** and close the Disc Cover. Insert a game controller and turn ON the PlayStation game console. Press the START Button anytime during the opening movie sequence to advance to the Title Screen.

### [MEMORY CARD]

A Memory Card (sold separately) is required to save your game position as you progress through Parasite Eve™. Insert a Memory Card into the PlayStation game console BEFORE starting play. Data can be saved or loaded from either Memory Card slot. Do not remove a Memory Card while saving or loading games; doing so could damage the game data. See page 8 for instructions on saving and loading games.

# [controls] [3]

## [standard controller]

[L1 button]

- scrolls up the menus

[L2 button]

- not used during play

[directional buttons]

- move character  
- select menu commands

[select button]

- not used during play

[start button]

- pause/unpause game

[R1 button]

- scrolls down the menus

[R2 button]

- not used during play

[Δ button]

- displays menu screen

[○ button]

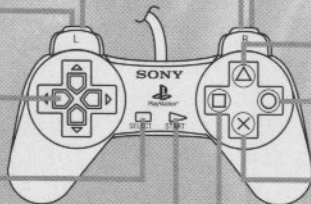
- cancels selected command  
- hold while walking to run

[× button]

- executes selected command

[□ button]

- skips the battle command



## [analog controller]

[directional buttons]

- move character  
- select menu commands  
- n/a if in analog mode

[left analog control]

- move character  
- select menu commands

[analog button]

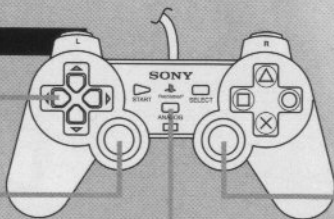
- analog/digital switch  
(analog mode when LED is lit)

[other buttons]

- used as above

[right analog control]

- not used during play



NOTE: The game can be reset by simultaneously pressing the START, SELECT, L1, L2, R1, and R2 Buttons.

[ 4 ]



The Eve within

# [introduction] [5]

"Mitochondria"— A microorganism that lives within human cells, and has existed symbiotically with the nucleus for hundreds of millions of years. Critical for production of energy within living things, mitochondria has its own genetic code, and the ability to evolve and multiply.

After exhaustive DNA research, it appears that all mitochondria can be traced to a single source: a female human in ancient Africa, identified as "Mitochondria Eve".

What if this organism had "her" own intentions and was waiting for the day to take over the human race...?

Christmas Eve. New York.

"She" awakens on this destined day.

And now, the final battle for survival between the human race and the mitochondria is about to begin...

you will awaken...

# [ 6 ] [cast]

After losing her mother in an accident when she was a child, Aya grew determined to become a detective. She has been on the NYPD's 17th Precinct force for 6 months. Although quiet on the surface, she can be very stubborn and unyielding. She and her partner, Daniel, called "the father and daughter team," occasionally get into arguments because of her stubborn nature.



**[AYA BREA]**



A veteran detective of the NYPD's 17th Precinct. Although he has 20 years of experience behind him, he believes "a detective belongs in the field" and is not on the road to a promotion anytime soon. He and his wife, Lorraine, got a divorce a year ago, so Daniel raises their 8-year old son, Ben, by himself. He is Aya's senior as well as partner and father figure.

**[DANIEL "BO" DOLLIS]**

**[MELISSA PEARCE]**

An opera singer on the rise. Her long awaited wish to play the leading role comes true in an opera to be held on Christmas Eve. Although she is an introvert and was constantly sick as a child, she began to aspire to become an actress after learning about the opera. She occasionally commutes to the hospital even now and is always carrying some sort of medication.

**[KUNIIHIKO MAEDA]**

A scientist who resides in the pharmaceutical department at a Japanese university. After an incident that took place a number of years ago, he has devoted his studies to mitochondria. Although a very competent scientist, he is completely indifferent to everything else. His clothes are untidy, and his hair is perpetually uncombed. Naturally, he has no luck with women.

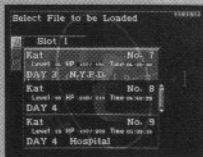


# [8] [saving & loading]



## [SAVING DATA]

You can save your data by making phone calls from telephones on the Field. Telephones are indicated by flashing red lights. Move Aya so that she stands in front of the telephone and press the **X** Button. The Save Menu will be displayed asking, "Do you want to save?" Select the appropriate Memory Card slot to use. You will need a Memory Card with at least one block available. Do not insert or remove a Memory Card while saving games.  
**NOTE:** There will be save points other than telephones available during the game.



## [CONTINUING FROM SAVED DATA]

Insert the Disc from the previous saved game and the Memory Card with the saved data, and turn ON the PlayStation game console. Go to <Continue> on the Menu Screen and choose the data file that contains the game you want to resume.  
**NOTE:** Do not insert or remove a Memory Card while loading data.



# [beginning a game] [9]

After the game's opening movie is completed, the Title Screen will appear. (Press either the START Button or the **X** Button to skip the opening movie and go directly to the Title Screen.) Press the START Button to go to the Menu Screen and choose either <New Game> or <Tutorial>. If you choose <New Game>, the game will start. If you choose <Tutorial>, a general overview of the game will be displayed. Press the **X** Button to advance the tutorial. Press the SELECT Button to exit the Tutorial and return to the Title Screen.

In the game you control Lieutenant Aya Brea. How the game progresses will depend on whom Aya speaks to and what she finds. It may also change depending on which option you choose when asked to make a choice. When you encounter enemies on the Field map, a battle will begin. If Aya's HP falls to 0, the game is over.

## [FIELD]

Control Aya using the Directional Buttons or the Left Analog Control (hereafter referred to as the Directional Buttons). When you see people, move close to them and press the **X** Button to speak to them. When standing in front of an object, press the **X** Button to search or collect items. You can retrieve important information and useful items this way – be especially thorough when talking to people and searching objects that look suspicious.



## [WORLD MAP]

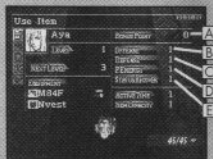
As the game progresses, a map of Manhattan will appear, offering different locations to explore. Use the Directional Buttons to choose where you want to go on the map and press the **X** Button. Additional locations will be added to the map later – use your detective skills to determine which location to examine. If you wish, you can press the SELECT Button to activate the Heli-Cam, which follows the helicopter as it travels over the city. Press the SELECT Button again to return to the normal World Map view.



# [10] [menu window]

## [STATUS SCREEN]

While on the Field, press the **△** Button to display the Status Screen. This shows the status of Aya's overall skills and items she possesses. Scroll through the icons on the left side of the screen using the Directional Buttons and press the **⊗** Button to proceed to the next screen.

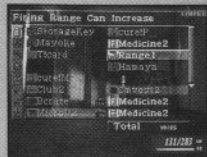


- A] **Bonus Point (BP)** – Awarded when your level goes up. The number of points awarded after a battle will increase if you evade enemies' attacks.
- B] **Offense** – Aya's offensive skills.
- C] **Defense** – Aya's defensive skills.
- D] **PEnergy** – Affects the PE bar's recovery rate as well as the diminishing rate when Parasite Energy is used.
- E] **Status Recover** – Affects the time needed to recover from abnormal status attacks.



## [ITEM ICON]

All items that Aya is currently carrying will be displayed. Items she is equipped with will be highlighted in blue. Here you can <use> or <discard> items as well as <move> items and <reload> guns. Use the Directional Buttons to scroll through the items and press the **⊗** Button to show the commands listed above. Choose the command you want and press the **⊗** Button to execute.



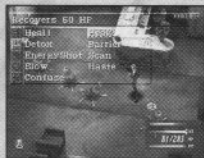
Items highlighted in gray may not be chosen. There is a maximum number of items Aya can carry at any one time (including weapons and armor). Your item capacity is a maximum of 10 items at the beginning of the game). Item Capacity can increase upon increasing Aya's level and/or by distributing the Bonus Points (BP).

- Item** – Usable items such as Medicine 1 are displayed in white. Items that cannot be used at this time are in gray. Select an item to see its purpose at the top of the screen.
- Move** – Organizes the displayed items. It may be convenient to move the items you use most frequently to the top of the list.
- Reload** – Reloads the weapon with the specified number of bullets.
- Item Capacity** – Your maximum item capacity (number of items you can carry).



## [ PARASITE ENERGY (PE) ICON ]

Displays Parasite Energy that can be used at Aya's current level. Use the Directional Buttons to select a type of Parasite Energy and see its effects at the top of the screen. Press the **X** Button to use the Parasite Energy. If Parasite Energy is highlighted in gray, you do not currently have enough PE to use it, or it cannot be used at that time. As Aya's level increases, additional types of Parasite Energy will become available.



## [ WEAPON ICON ]

Changes weapons and displays information on the weapon Aya is equipped with. You'll see the list of all the weapons currently carried on the right side of the screen. Select a weapon from the list to change to a new weapon. The Slots beneath each weapon show any Additional Effects.

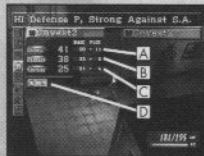


- A) **Attack** – The higher the number, the more damage the weapon can do.
- B) **Range** – The area in which the weapon can maximize its effects and hit the target with certainty.  
The higher the number, the larger the area size.
- C) **Bullets** – The maximum number of bullets the weapon can hold.
- D) **Additional Effects** – Special effects added to the original weapon functions.



## [ ARMOR ICON ]

Changes armor and displays information on armor that Aya is equipped with. By pressing on the Directional Buttons, Additional Effects of the armor will be shown. You'll see the list of all the armors held at the time on the right side of the screen. Select an armor from the list to change to a new armor.



- A) **Defense** – The higher the number, the stronger your defense against attacks.
- B) **PEnergy** – The higher the number, the stronger your defense against enemies' PE attacks.
- C) **Critical** – The higher the number, the less likely you will receive critical hits from enemies.
- D) **Additional Effects** – Special effects added to the original armor functions.

# [12] [menu window]



## [SYSTEM ICON]

Sets users' preferences.

**Sound** – <Stereo> <Mono> Audio mode switch.

**Cursor** – Saves the cursor location it was left at before closing the window or takes it back to the top. It's easier to get back to frequently used items when set to Memory.

<Default> – Sets cursor to default position. Cursor will be at the top of the list when you open a window.

<Memory> – Memorizes the location of the cursor. Cursor will be at the same location it was left at previously.

**Window** – Adjusts the R=Red, G=Green and B=Blue color on the window. Once you have chosen the colors you like, select <Completed>. To return to the original color, select <Default>.

**Position** – Adjusts the screen position.



## [SORT ICON]

Automatically arranges items in one of three different orders. This will become useful when the number of items you carry increases.

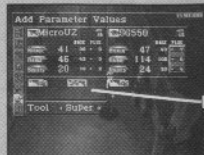


## [TUNE-UP ICON] (Appears a little later in the game)

Use the item "Tool" to install and remove Additional Effects and Parameter Values on equipment. Once you have obtained a Tool, select the equipment you want to remove the Additional Effects from and the equipment you want to install the Additional Effects onto. When you choose the Additional Effects you want to remove, it will be automatically installed onto the other one. The weapon or armor must have an available slot in order to install an Additional Effect.

NOTE: the equipment you removed the Additional Effect from will be lost.

A) **Slot** – The number of slots indicates how many Additional Effects you can attach to the equipment.



### Tune-Up

By tuning up your equipment, you can carry over Additional Effects and Parameter Values from one weapon to another and from one armor to another. Normally, you can only carry over one Additional Effect from each piece of equipment. You can create original equipment by choosing various Additional Effects and adding Parameter Values.



### [ BONUS POINT ICON ]

Bonus Points (BP) that are awarded when Aya's level increases can be distributed to either of two character parameters or used to increase the Parameter Values of equipment. Select a parameter or equipment and use the Directional Buttons to distribute the BP.

- A] **Bonus Point** – BP available to distribute.
- B] **Active Time** – Affects the rate of increase in the AT Bar.
- C] **Item Capacity** – Affects the maximum number of items Aya can carry at any one time.



### Bonus Points

By distributing BP, you can design an original Aya character. 100 Bonus Points can be translated into one additional point to an equipment parameter or one additional level for either of the two parameters. Keep in mind that the more enemies successfully attack you, the less BP you are awarded. Avoiding the enemies' attacks is the key in accumulating BP.



# [14] [battle]

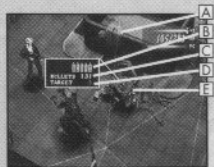
You will immediately enter a battle when you encounter enemies. Most enemies are encountered randomly. An Information window that contains the AT Bar, HP and PE Bar will be displayed on the screen. Avoid the enemies' attacks until your AT Bar fills up. Once the AT Bar is full and it starts to flash, execute your command. The battle will progress in real-time and will stop only when you are selecting commands. Commands you can select are explained in the following pages.



- A] **AT Bar** – Choose and execute commands when this gauge is full and starts to flash.
- B] **HP** – Hit Points. The game is over when it falls to 0.
- C] **PE Bar** – Shows the status of Aya's mitochondria energy.

## [ATTACKING]

Attack when the AT Bar is full. Press the **X** Button to enter the Attack mode, then select and execute commands to attack. The closer Aya is to the enemies, the more damaging an attack will be and chances are better that a critical hit will occur. On the other hand, if an enemy is out of range, Aya is more likely to miss.



- A] **Range** – The area where an attack is effective. Green lines show the area in the air and blue lines show the area on the ground.
- B] **Attack Window** – Bullet graphics— number of consecutive bullets that can be fired.
- C] **Bullets** – number of bullets loaded.
- D] **Target Number** – Cumulative number of enemies that appear during a battle ("NO TARGET" is displayed when there are no enemies on the screen).
- E] **Target Cursor** – Use the Directional Buttons to select the enemy you want to attack.

### Using Items

When the AT Bar is full, items can be used during battles. Open the Menu Screen and select the Item icon. Use the Directional Buttons to scroll through the list. You can change equipment by selecting a weapon or armor in the same manner. You can also use items and change equipment on the Field.

### Avoiding Attacks

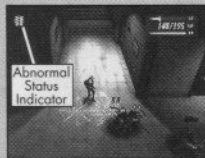
You can avoid the enemies' attacks by using the Directional Buttons while you wait for your AT Bar to fill up. Do not stay too far away from the enemies; you'll need to attack them as soon as the AT Bar fills up.

### Escaping from Battles

If the AT Bar is full and you open the Menu Screen, the Escape icon will appear as the last icon to your left. You can escape from a battle by selecting this icon. However, you may sometimes fail to escape from a battle.

## [ABNORMAL STATUS]

Aya's status sometimes becomes abnormal due to some enemies' PE attacks. An icon will appear in the upper left or right of the screen to indicate that Aya is affected. This will return to normal during a battle at various rates depending upon Aya's Status Recovery. Abnormal Status effects will disappear automatically once the battle ends. You can also return Aya's status to normal by using items or Parasite Energy.



### Examples of Abnormal Status

There are more types of Abnormal Status than the ones listed here.

**Poison** — HP decreases slowly during battle. The rate will depend upon the enemy.

**Stiffness** — Slows Aya down.





# [16] [using parasite energy]

Parasite Energy is the special skill that can be used by releasing the mitochondrial power inside of Aya. The green gauge in the Information window shows the status of Parasite Energy, and as the energy is used, the green gauge decreases. Parasite Energy can be used both during a battle and on the Field. Unusable Parasite Energy, due to the lack of energy or location, will be displayed in gray.



## Parasite Energy and the PE Bar

The PE Bar will flash when it is full. Damage received from the enemies' attacks will decrease for a while when the PE Bar is flashing. When selecting Parasite Energy to use, check the PE Bar in the Information window to see how much of your PE the spell will use. When the bar is completely red, you will have to wait until the PE Bar partially recovers over time before you can use any energy. Be sure to always check the PE Bar when using Parasite Energy.

## Examples of Parasite Energy

There are more types of Parasite Energy than the ones listed here. Additional types of Parasite Energy will be obtained as Aya's level increases.

**Heal 1** – Recovers 30 HP.

**Detox** – Neutralizes poison.

**Barrier** – Invincible from some enemy attacks for a given period or until successfully attacked.

**Medic** – Cures all abnormal status.



# [after a battle] [17]

After you have defeated all enemies, Experience Points will be awarded. Aya's level will increase when the Experience Points reach the same number of points as the "Next Level" indicated on the Status Screen. Her basic status improves as well and BP will be awarded upon increasing a level.

## Gaining Items

You may sometimes gain items from enemies in addition to getting Experience Points. Select an icon from the upper left corner to decide what you want to do with these items. Choose the items you want to keep and add them to Aya's inventory.

- A] **All Icon** – Adds all items to Aya's inventory.
- B] **Select Icon** – Selects only the items you want to keep. Use the Directional Buttons to scroll through the items. You can select as many items as you want to put in your inventory, provided you have space remaining in your inventory.
- C] **End Icon** – Returns to the Field. Use this icon when you don't want any of the items or have finished selecting items.

Level	Exp	Next Level	Exp	BP
16	180	17	210	10
HP	MP	Strength	Agility	Stamina
210	210	18	18	18
100%	100%	17	17	17
67	100%	20	100%	100%


Parasite powers have evolved  
Confuse

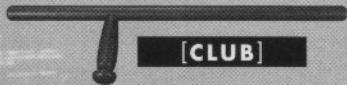
Confuses Enemy for a While

Obtain All Items	
<input type="checkbox"/> Magazine6	<input type="checkbox"/> Club 1
<input type="checkbox"/> Magazine6	<input type="checkbox"/> Gate
<input type="checkbox"/> A	<input type="checkbox"/> Medicine 1
<input type="checkbox"/> B	<input type="checkbox"/> Medicine 1
<input type="checkbox"/> C	<input type="checkbox"/> TheaterKey
	<input type="checkbox"/> Medicine 1



# [18] [weapons]

You may obtain weapons from item boxes found on the Field. Press the  Button to open an item box when in front of one. You can upgrade your weapons by using items that add supplemental values, using Tools for tune-ups and items for increasing Additional Effects. Here is a partial list of available weapons.



[CLUB]



[HANDGUN]



[SHOTGUN]

## Weapon Window

The status of your weapons will be shown. <Base> is the weapon's original ability. <Plus> shows the supplemental values of the weapon added by use of items and BP. The Armor window is in a similar format.

## Examples of Additional Effects

There are more types of Additional Effects than the ones listed here.

**Rate of Fire: 2** – Shoots up to two bullets per turn.

**Command: 2** – Executes two commands in one turn.

**Burst** – Shotgun effects; bullets hit the targeted enemy plus other enemies in the line of fire.

## Reloading

Ammunition will be automatically reloaded once you run out of ammo during a battle, but Aya cannot move while weapons are reloading. You should reload on the Field before a battle as often as possible.

	Base	Plus
Rifle		
MicroUZ	11	
RIFLE	41 ▶	47
RANGE	45 ▶	114
BURSTS	20 ▶	24
Additional Effects		

You can equip yourself with one of five different types of armor: Vest, Protector, Jacket, Suit and Armor. These are made from various materials and can be upgraded by installing Additional Effects and Parameter Values.



[PROTECTOR]



[VEST]



[ARMOR]



[SUIT]

### Materials

**Normal** – Normal material. Provided by the government.

**Kevlar** – Durable material used in bulletproof clothing.

**Spectra** – Special bulletproof material. Light and durable, but very rare.

### Examples of Additional Effects

There are more types of Additional Effects than the ones listed here.

**Poison** – Diminishes the status effect of the "Poison" attack.

**Confusion** – Diminishes the status effect of the "Confusion" attack.

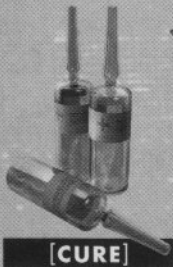
**Stiffness** – Diminishes the status effect of the "Stiffness" and "Stop" attack.

**Darkness** – Diminishes the status effect of the "Darkness" attack.

HI Defense P, Strong			
Cinvest2			
OVERCH	41	30	11
PERSEV	38	30	5
GRIT	25	21	6
DETAILS			

# [20] [items]

There are more items available than the ones listed below. Some of them, such as the "Theater Key" and the "Rehearsal Key", are necessary in order to further proceed in the game.



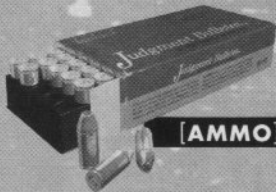
[CURE]



[MEDICINE]



[TRADING CARDS]



[AMMO]

## Examples of Items

There are more types of Items than the ones listed here.

**Medicine 1** – Recovers 45 HP.

**Cure-P** – Cures the abnormal status "Poison". Prevents the "Poison" effect once when used during a battle.

**Offense+1** – Increases the Offense status of a weapon by 1.

**Trading Card** – Increases the size of the equipment's Additional Effect slots when given to a certain person.

**Tool** – Removes an Additional Effect or Parameter Values from one equipment and installs it onto another.

**Ammo+6** – Six regular bullets. +15 and +30 are also available.