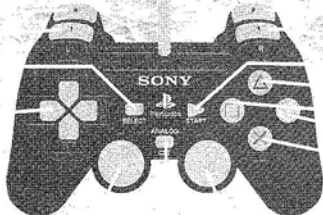


CONTROLS

L2 Button
L1 Button
SELECT

DIRECTIONAL
PAD

LEFT STICK
(Not Used)



LED

R2 Button
R1 Button
START
△ Button
■ Button
○ Button
× Button

RIGHT STICK
(Not Used)

FIELD SCREEN

L1 Button Not Used

L2 Button Not Used

Directional Pad

Move Up/Down/Left/Right/
Diagonally; Move the Cursor

Select Not used

Start Pause/Restart a Game

R1 Button If pressed during a move,
the Character walks slowly

R2 Button Not Used

△ Button Open a Menu;
Cancel a Command

○ Button Not Used

× Button Talk to a Character;
Execute a Command

■ Button Not Used

BATTLE SCREEN

L1 Button Increase the Special
Technique Power

L2 Button Not Used

Directional Pad

Select a Battle Icon or Item

Select Switch the Opponent's HP
Display On/Off

Start Pause/Restart a Battle

R1 Button Increase the Special
Technique Power

R2 Button Not Used

△ Button Open Item menu; Cancel

○ Button Not Used

× Button Execute Command for
Battle Icon or Item Selection

■ Button Use a Special Technique

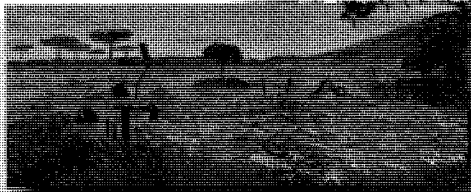
DIGIMON WORLD is a mysterious fusion of the natural world and digital fantasy. At one time, many kinds of Digimon lived together on File Island, but at a certain moment in their history, some Digimon lost the ability to speak. They left File City to wander the various landscapes of File Island.

• **Factorial Town**

A messy and disorderly machine town. Old-fashioned and high-tech coexist. Digimon often hide in its sewers.

• **Misty Trees**

A beautiful misty forest is located on the northwest part of the island.



• **Native Forest**

A peaceful forest surrounds File City. There is a famous natural lake (Dragon Eye Lake) to the southwest.



• **Frostland**

On the north side of the island is an area permanently frozen. Pasture and some houses are visible under the snow.

• **Tropical Jungle**

A lush green tropical jungle shelters a natural spring.



• **File City**

MAIN CHARACTERS

• Player (You)

As a young boy with a very cool-looking Digivice, you're the only one who can travel to Digimon World.



• Digimon

As a Digivice user, you'll be able to help out and befriend Digimon. The Digimon are an important part of the game, and you'll be able to use them in a variety of ways.

IN-TRAINING DIGIMON



• **BlackCat**
A small, black, cat-like Digimon.



• **Pigmon**
A small, white, pig-like Digimon.

ROOKIE DIGIMON



• **Agumon**
A small, green, dinosaur-like Digimon.

• **Penguinmon**
A small, blue, penguin-like Digimon.



• **Beetlemon**
A small, black and white, insect-like Digimon.

DIGIMON GROWTH

As time passes, Digimon get older and stronger. They go through different stages of growth, and you'll be able to see them grow.

In-Training → Rookie → Champion → Ultimate

CHAMPION DIGIMON

• Arcemon

A large, red, dragon-like Digimon.



• **WarGreymon**
A large, black and white, dragon-like Digimon.

ULTIMATE DIGIMON

• MetalGreymon

A large, black and white, dragon-like Digimon.



GAME FLOW

HOW TO PLAY

Your purpose in this game is to save Digimon Wars from danger. This section shows the basic flow of the game. Raise your Digimon partner to become very strong and bring back to his City those Digimon who have lost their smart.

FIELD



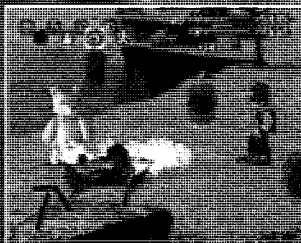
FILE CITY



SHOP

ARENA

BATTLE



RAISING A DIGIMON



FIELD AND MENU

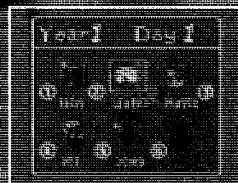
FIELD SCREEN

In Digimon Wars, the Day and the Field are connected. You can go between them using the Directional Pad. You can also enter a battlefield or a cave from a special entrance.



MENU SCREEN

In Menu screen, you can check your condition or the condition of your Digimon partner. You can also use an item or raise your Digimon.



SAVE A GAME

When you sleep your Digimon partner, you can save the game to your Memory Card.

1. Clock:

Displays game time.

2. Player (You):

3. Your Digimon Partner:

Displays how happy your Digimon partner is (See p. 10).

4. Happiness Gauge:

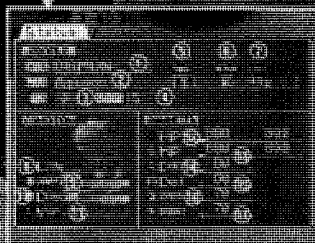
Displays the discipline level of your Digimon partner (See p. 10).

1. **Item:** A list of items you have (See p. 16-17)
2. **Digimon:** Check condition of your Digimon partner (See p. 10-11)
3. **Player:** Check condition of you Player (You) (See p. 12-13)
4. **Praise:** Praise your Digimon partner (See p. 17)
5. **Scold:** Scold your Digimon partner (See p. 17)
6. **Sleep:** Sleep your Digimon partner (See p. 16)

DIGIMON STATUS

DIGIMON STATUS

From this screen, you can check the current status of your Digimon partner and switch his technique.



PROFILE

- Given Name:** Shows the name you gave your present Digimon partner.
- Digimon Name:** Shows your present partner's Digimon name.
- Age:** Your Digimon partner's age.
- Weight:** Your Digimon partner's weight.
- Specialty:** Shows your Digimon partner's Specialties (see p. 16). These affect the Techniques he can use.

- Type:** Shows your Digimon's Type. Based on your Digimon's Type, opponent Digimon may want to battle. Digimon's Type does not affect the outcome of the battle.



Virus



Vaccine



Data

- Active Hours:** Shows the time of day your Digimon partner is strong or weak for activity.

CONDITION

- Life:** Each time your Digimon partner loses a battle, this goes down by one. If this goes to zero, he will fade away.
- Happiness:** When this is high, a Digimon lives longer, but he will become selfish.
- Discipline:** When this is high, a Digimon tends to be more obedient, but his life span gets shorter.

- Virus:** When a Digimon goes to the bathroom anywhere but in a toilet, this virus gauge increases. (Watch out!)

PARAMETER

- HP (Hit Points):** Like a LIFE gauge. When this goes to zero, your Digimon will fade away.
- MP (Magic Points):** Needed to use Techniques. When this goes to zero, your Digimon cannot use any Techniques.
- Offense:** When this is high, Digimon's offense is powerful.
- Defense:** When this is high, Digimon's defense is powerful.
- Speed:** When this is high, your Digimon's battle attack, running, behavior order store done speed.
- Brains:** A smart Digimon can fully carry out your orders.

TECHNIQUE SET

In "Technique Set," you can check the Techniques that your Digimon partner presently has. You can set a maximum of 3 Techniques at one time. When you press **OK** button in this screen, you can enter TECHNIQUE SET mode and you can switch the Technique. By pressing **EXIT** button in this screen, you can enter HELP mode.



Your Digimon partner's personally set technique.



Techniques your Digimon partner has mastered that are available to be set.



Techniques your Digimon partner cannot master, but listed in his Specialty (see p. 16).



Techniques your Digimon partner has not yet mastered, but once mastered, can be set.



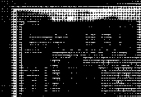
Techniques your Digimon partner has mastered, but cannot be set for his Digimon Specialty.



Technique you are currently trying to set.

AN EXAMPLE OF SWITCHING TECHNIQUE

- Select a Technique to remove.**



First, move the cursor to "Fire Tower" and press **ENTER** button to set. Press **OK** button. This screen is shown.

- Select a new Technique.**



Next, select a new Technique to set. Let's select "Magma Bomb".

- Execute the selection.**

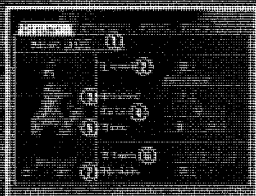


If you decide "Magma Bomb" is really the one you want, move the cursor and press **ENTER** button. Now "Fire Tower" is disappeared by "Magma Bomb".

PLAYER STATUS

PLAYER STATUS

In this menu, you can check the condition of the Player (You).



- 1. Name:** The name of the Player (You).
- 2. Tamer Level:** Shows the level of the player's Digimon-raising skill.
- 3. Raised Digimon:** The number of Digimon the player has raised.
- 4. Money in Hand:** The money the player currently has, in "Bits".
- 5. Total Time:** Shows the total time of play.
- 6. Special Items:** Special Items that the player has gained during an adventure.
- 7. Medals Collected:** The number of medals the player has gained.

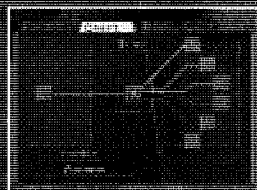
DIGIMON TABLE

Shows all the Digimon a player has raised. Select a Digimon with a cursor and press **X** button to show the Digivolution chart.

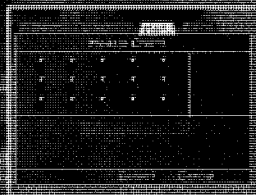


DIGIVOLUTION CHART

Shows the selected Digimon's growth chart.

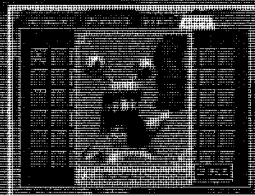


MEDAL



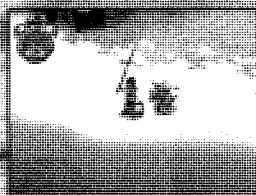
You can win a special achievement medal during a game. You get the medal automatically when you click on a certain hidden location while playing. When you win a medal, it shows on this screen.

CARD



Rumor has it there is a shop that sells Digimon Cards somewhere in the huge Digimon World. Here you can see all the Digimon cards you've bought and collected.

FISHING



If you get a fishing rod, you'll be able to fish at Dragon Eye Lake.

How to Fish

1. Select your bait (Food Item).
2. Decide which direction to cast your line.
3. Press **X** button to pull back your rod, then press **X** button one more time with the force you want to cast to cast your line.
4. When a fish takes the bait, press **X** button.
5. Reel in the line using **X** button. When the tension gauge turns red, the fishing line is about to break, so be careful.

Directional Pad: Use Left/Right keys to select where you want to cast the line.

X Button: Use to cast your line, make a half turn the bait, and to reel in the line.

BATTLE

There are other Digimon on the field besides your partner. When you meet another Digimon and it shows the sign to fight, a battle will start. During the battle, you can send instructions to your Digimon partner using Battle Icons.



BATTLE SCREEN



1. **Player (You)**
2. **Digimon Partner**
3. **Opponent Digimon**
 1. **HP Gauge:** Shows your Digimon partner's remaining Hit Points (see p. 111).
 2. **MP Gauge:** Shows your Digimon partner's remaining Magic Points (see p. 111).
 3. **Friend Gauge:** When this gauge is full, your Digimon partner can use his **Friendship Technique** (see p. 27).
7. **Battle Icons:** By using these it once, you can send instructions to your Digimon partner.

BATTLE ICONS



Your Call! Leave everything to your Digimon partner and let him fight the way he wants.



Technique (max. 3): Tell him to use the Techniques you choose in Technique Set.



Patience! Instruct your Digimon partner to go on the defensive (retreat or dodge).



Move Away! Instruct your Digimon partner to back off and keep a safe distance from the opponent.



Change Target! When fighting multiple opponents, you can decide to change which opponent to attack.



Run Away! Run away from the battle. However, you may not be able to run away from all battles.

The Battle Icons change according to the intelligence of your Digimon partner. The Icons shown here appear when your Digimon partner's intelligence is at its highest. There are numerous other Icons.

DIGIMON TECHNIQUES

Each Digimon has a power and unique Techniques. The Techniques available differ according to your Digimon's Specialty (see p. 111). By mastering all the available Techniques, you can gain an advantage in battle. Each Digimon also has at least one **Friendship Technique**. A Friendship Technique is a powerful Technique a Digimon can use in battle when the **Friend Gauge** is full.

Techs

	POWER	HP	RANGE	EFFECT
Magma Bomb TM	279	132	L	☐
Spinning Shot	389	150	L	

1. **Technique Name**
2. **Power:** Offensive Power of the Technique
3. **MP:** Magic Points spent when the Technique is used
4. **Range:** Distance from the opponent within which the Technique may be used
5. **Spec:** Extra side effect on the opponent which may occur when the Technique is used.

STATUS ERROR

Confusion: Digimon is confused and is not able to attack the opponent properly. He will not listen to your commands.

Limit Immobilization: Digimon turns into a stone image and only one technique can be used. Its defense is available.

Poison: Digimon's HP (Hit Points) will decrease little by little.

Paralyze: Digimon becomes paralyzed and won't be able to move.

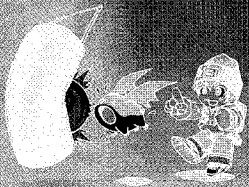
KNOCKOUT COMA

If your Digimon partner's HP (Hit Points) goes to zero during a battle, he will go down, and the knockout count will appear. If you don't treat the coma by using **Restore Floppy** or some other item when the knockout count appears, your Digimon partner will not only lose the battle, but will also lose one LIFE. When you lose all LIFE, your Digimon partner will fade away.

RAISING YOUR DIGIMON

HOW TO RAISE YOUR DIGIMON

The Digimon that you raise will age one year every 24 game hours. As he ages, his looks will digivolve as well. How the Digimon digivolves changes in response to how you raise him. By changing how you train or discipline the Digimon, you can change which of the many different Digimon he may digivolve into.



THREE KEY ELEMENTS THAT AFFECT DIGIVOLUTION

- Care Mistakes:** The number of care mistakes made in areas such as food, sleep and bathroom is important. In some cases, you must increase the number of care mistakes in order to make your Digimon digivolve into a particular Digimon.
- Weight:** Digimon's weight at Digivolution makes a difference. If you want your Digimon to digivolve into a big, heavy Digimon, put on weight by increasing his food.
- Parameters:** Digimon's Parameters (see p. 10) at Digivolution are important. If you want your Digimon to digivolve into a strong Digimon, keep his Parameters high.

DIGIMON SPECIALTY

FIRE: Offensive Specialty, uses flame or heat energy as a Technique.

BATTLE: Attacks using physical strength. He's good at increasing his own power.

AIR: Controls the power of wind and electricity. Specializes in overall or indirect attacks.

NATURE: Specializes in using poison or scent. He's good at Special Abilities water.

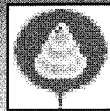
ICE: Controls water freely and is able to create cold air by freezing.

MECH: Able to control data directly from Digital World. Available only to an Ultimate Digimon.

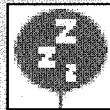
FILTH: Dirty things such as poop. May be powerful against some opponents.

THOUGHT BALLOON

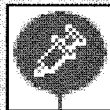
Your Digimon partner will express his feelings and wants with a thought balloon. Pay attention to the thought balloon and respond as best you can. If you ignore your Digimon, he may sicken and fade away.



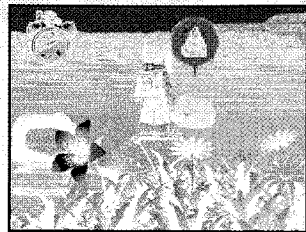
Poop: Digimon needs to go to the bathroom. If you don't get him to a toilet in time, he will go in a field, increasing his "Virus" gauge.



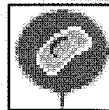
Sleep: Digimon wants to go to sleep. Select "Sleep" (see ③ below) from Menu screen. HP and MP levels will fully recover, and your game status can be saved in memory card.



Sickness: Pushing your Digimon physically (like not letting him sleep), may make him sick. Cure him by using the correct Item (see p. 20) or by taking him to a clinic.



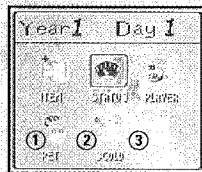
Food: Digimon is hungry. Feed him by selecting "Food" from Item screen (see p. 20) and then select "Use."



Injury: When Digimon is attacked in battle, and his HP (see p. 10) is low, he may get hurt. Heal the injury by using the correct Item (see p. 20) or taking him to a clinic.



Tiredness: Your Digimon is very tired. Go to Jijimon's house and see Punimon, so he can rest. HP and MP levels will increase.



Praise: Choose ① to praise your Digimon partner. When you do this, his "Happiness" will increase, but his "Discipline" will decrease.

Scold: Choose ② to scold your Digimon partner. When you do this, his "Discipline" will increase, but his "Happiness" will decrease.

There is a relationship between each Digimon's Specialty and the Techniques they use. For example, a Digimon with the Ice Specialty would use water in a powerful way, but would use fire weakly.

TRAINING

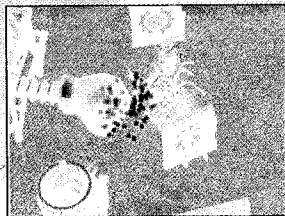
To improve your Digimon partner, training is needed. When you train a Digimon, game time advances 1 hour. Depending on the Digimon's Specialty, some abilities are easy to improve and some abilities are hard to improve. Plan ahead.

Normal Training: Abilities do not increase a great deal, but some improvement is guaranteed.

Bonus Try Training: When successful, abilities increase a great deal. But take care in case the training fails.

TRAINING AT THE GREEN GYM

TRAINING	EFFECT
Strike:	Boosts Offensive Power
Boulder Moving:	Boosts Max HP level
Punch Glove:	Boosts Defensive Power
Running:	Boosts Speed
Classroom:	Boosts Intelligence
Waterfall:	Boosts Max MP level



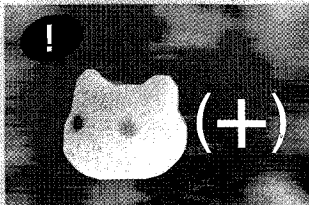
LEARNING A TECHNIQUE

Your Digimon partner can learn Techniques (see p. 11,15) according to his Specialty (see p. 16) while in the course of an adventure. In some cases he will learn Techniques during training, but this is rare. Mostly, he will learn Techniques by watching his opponents use them in battle.

INHERITING CARE DATA

In some cases, Digimon may fade away and be reborn during an adventure. At that time, the Digimon gives birth to a Digitama, a Digimon egg, using his last bit of energy. This Digitama may inherit the Care Data. Care Data is the record of how well you cared for your Digimon. The Digimon's cause of fading away determines whether or not Care Data will be inherited.

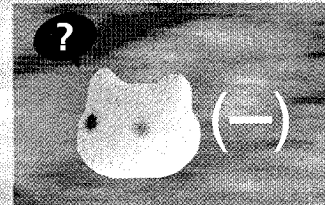
If a Digimon fades away at the end of a normal life span, it will give birth to a good Digitama who inherits all the Digimon's abilities.



All the Techniques the Digimon had learned will be inherited.

A player can choose what kind of Digitama he wants.

If a Digimon fades away as a result of sickness, or if a Digimon loses all LIFE in the course of losing a battle, the Digitama will not inherit most abilities.



Digitama may forget Techniques learned by Digimon.

The kind of Digitama will be chosen randomly.

By letting the Care Data be inherited through many generations, you can raise a powerful Digimon, who has mastered many Techniques.

ITEMS

There are many different kinds of items. Some recover Digimon's HP (Hit Points) or MP (Magic Points). Some increase his power. You can obtain items by simply picking up items found, or buying them at a shop. Here are some item examples:



RECOVERY ITEMS

ITEM NAME	EFFECT
HP Floppy	Recovers HP (Hit Points)
MP Floppy	Recovers MP (Magic Points)
Double Floppy	Recovers both HP and MP
Various Floppy	Cures some ailments (see p. 15)
Omnipotent Floppy	Restores status. Recovers HP and MP
Protective Floppy	Protects Digimon in battle
Restora Floppy	Cures Knuckle Gama (see p. 15)
Bandage	Cures a wound
Medicine	Cures an injury (or ailment)

FOOD ITEMS

ITEM NAME	EFFECT
Meat	Basic food, satisfies hunger
Blue Apple	Makes Digimon happy

OTHER ITEMS

ITEM NAME	EFFECT
Auto Pilot	Return to City fast
Portable Toilet	Use anytime, anywhere

BATTLE POWER ITEMS

ITEM NAME	EFFECT
Offense Disk	Boosts Offensive Power in battle
Defense Disk	Boosts Defensive Power in battle
Hi-Speed Disk	Boosts Speed in battle
Omnipotent Disk	Boosts all battle abilities

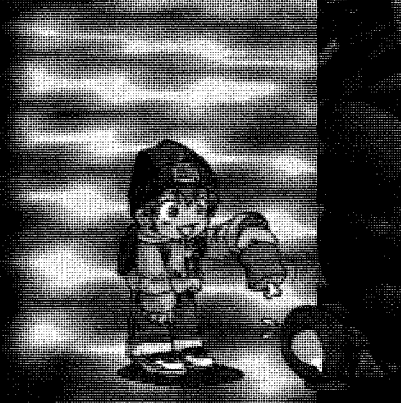
PERMANENT ABILITY ITEMS

ITEM NAME	EFFECT
Offense Chip	Boosts maximum Offensive Power level
Defense Chip	Boosts maximum Defensive Power level
Brain Chip	Boosts maximum Intelligence level
Speed Chip	Boosts maximum Speed level
HP Chip	Increases maximum HP (Hit Points) level
MP Chip	Increases maximum MP (Magic Points) level

DIGIVOLUTION ITEM

When you give a Digivolution Item to your Digimon partner, he can digivolve regardless of his condition. However, you can only use a Digivolution Item for an In-Training Digimon. Some Digivolution Items can only be given to a Champion Digimon.

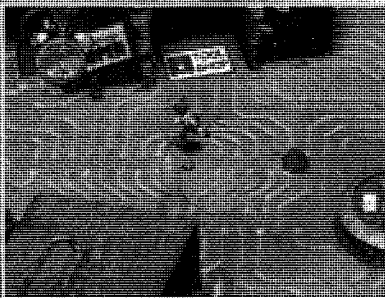
ITEM NAME	EFFECT
Grey Claws	Digivolve to Greymon
Fireball	Digivolve to Meramon
Black Wing	Digivolve to Diaboromon



There are many more items than the ones shown here.

FILE CITY

File City is the first place in the Digital World that you, the Player, will visit. In the beginning, it is deserted and lonely because there are very few Digimon still living there. So, in order to bring back the Digimon who left File City, it's up to you and your Digimon partner to locate Persuade and Command Items. As you gain more friends, they will open up shops that can provide you with useful items, and the City will again flourish.



SHOPS

ITEM KEEPER

This is a shop. An item opens when the City grows. They will hold items for you that you can't carry.



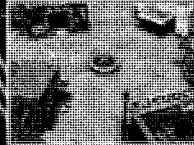
WARP SHOP

Useful warp items they send you to any place in the world instantly. You can prevent easily to the next adventure.



ITEM SHOP

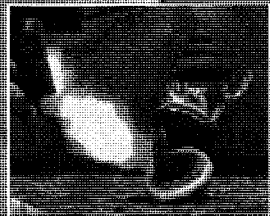
They sell all kinds of items, including many different Hoppies. You can also sell your items here.



File City will develop and more shops will open as more Digimon return to the City. So, back to the City from time to time and you'll find new shops and services.

ARENA

As the city grows, many shops and services will open. One of the most important is the Arena. Here you can have your Digimon compete against other Digimon who've come to the City for a tournament. The size and frequency of the tournaments held will increase as the City develops.



HOW TO PARTICIPATE IN A TOURNAMENT

1. REGISTER AT THE RECEPTION DESK

When you register at the Arena reception desk, you can choose a tournament by checking the tournament schedule. Depending on the tournament, contestants must qualify by meeting requirements such as Digimon Specialty (see p. 16) or generation. If the Digimon does not meet the requirements, he may not be able to compete. Registration times place the city before the opening of the tournament.



2. ENTER THROUGH THE GATE AT GAME TIME

Once you finish registration, go to the Arena. To compete, the Digimon must enter through a Contestant Gate. Do not be late. Latecomers will result in not being able to compete.



WARNING!

1. If, due to Digivolution or some other reason, your Digimon partner digivolves between the time of registration and the start of the tournament, he will not be allowed to compete.
2. If the match results in a tie, your Digimon partner will be declared the loser.

COMPETITION BATTLE

BATTLE WITH FRIENDS

Have a battle with a friend! In a Memory Card Competition Battle, you can use the Digimon data saved in a Memory Card and have the Digimon you raised fight against a Digimon your friend raised.



HOW TO SAVE YOUR DIGIMON'S DATA FOR COMPETITION BATTLE

In order to play Memory Card Competition Battle, first you have to register (save) the Digimon you raised. You can register using the Save Machine in Jijimon's house. However, you cannot register an In-Training Digimon.



BATTLE MODE

SINGLE BATTLE

One-on-one Digimon battle. Players use Controllers 1 and 2 to give orders to each Digimon.

TEAM BATTLE

Three-on-three or five-on-five team battle. Take on one Digimon at a time.

MEMORY CARD COMPETITION BATTLE FLOW

1. LOAD MEMORY CARD

Insert the Memory Card containing the data of the Digimon you want to compete against and load the data.

3. SELECT A STAGE

Select a stage for the match.

5. START THE BATTLE!

Competition Battle is similar to Arena Battle as played in the regular game. Players give orders to their Digimon using the controller (see Pages 2-3).

2. SELECT BATTLE MODE

Select a Battle Mode. There are three modes: Single Battle, 3-on-3 Team Battle, and 5-on-5 Team Battle.

4. SELECT A DIGIMON

From among the registered Digimon, select and confirm the Digimon you want to use for the match. When you finish selecting, both players must press the START button.

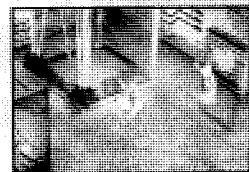
6. VICTORY AND DEFEAT

Results will be displayed on screen. When time runs out, the Digimon who does more damage to the opponent wins. In Team Battle, one team with more winning players and stronger players' abilities will not lose.

RAISING YOUR DIGIMON

TRAINING

At first, all training will be done in the Green Gym, but there are other training facilities and the effects are different.



DIGIMON DIGIVOLUTION

Digimon digivolve to many different Digimon depending on how you raise them. Using Agumon as an example, here is how your care will affect his Digivolution.



SPECIAL DIGIVOLUTION

While Digimon Digivolution is affected by your care, when you raise them they may mutate. We call this Special Digivolution. You can't see the Special Digimon on the chart, but you can still make them digivolve as a regular way after a mutation.

MEMORY CARD COMPETITION BATTLE

You can save competition battle data anytime. When you raise a strong Digimon, save often.



EXAMPLE: AGUMON'S DIGIVOLUTION

Greymon: In order to make Agumon digivolve to Greymon, he has to have a regularly scheduled lifestyle and high parameters!

Meramon: If Agumon has a tight body, high offensive power and a non-routine lifestyle, he will digivolve to Meramon.

Monochromon: If Agumon has a heavy body and high DP, he will digivolve to Monochromon. You can also raise him to Monochromon by using a Memory Card.

BATTLE TIPS

PARAMETERS CAN INCREASE AS A RESULT OF BATTLE

Although not as much as through training, your Digimon partner's Parameters (see p. 10) will grow a little after winning a battle.

HP	200	+1
MP	200	+2
DP	100	+2
Def.	10	+1
Speed	5	+1
Move	20	+1
Exp.	100	

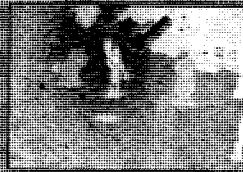
USE FINISHING TECHNIQUE WISELY TO DEFEAT AN OPPONENT

When the Finish Gauge becomes full, your Digimon partner will be able to use Finishing Technique (see p. 14, 15) by pressing the Finish button. Rapidly pressing L1 and R1 buttons one after the other while your Digimon partner lights up will increase the power. Since there is no way to restore the Finish Gauge, you must use Finishing Technique, if you use it successfully, you might be able to come from behind and win!



CONSIDER THE OPPONENT'S SPECIALTY AND USE TECHNIQUES ACCORDINGLY!

Each Digimon has certain specialties (see p. 16) which you should take advantage of. Some Techniques are the strong weaker of others. He is able to defend himself from some Techniques better than others. It might be wise to use Techniques which are strong against Digimonless in order to bring them down.



ACCESS DIGIMON WEB!

Digimon Web is a home page that Bandai has created for Digimon fans.

Here you can see the latest Digimon news and interact with other Digimon fans, visit anytime!

www.digimon.com