

LOOK FOR

SOUTH PARK CHEF'S LUV SHACK



MATURE
M
CONTENT RATED BY
ESRB



Acclaim & © 1998 Acclaim Entertainment. All rights reserved.
Acclaim Entertainment, Inc., One Acclaim Plaza, Glen Cove, NY 11545-2277
Licensed by Sony Computer Entertainment Inc. for use with the PlayStation game console. PlayStation and the PlayStation logos are registered trademarks of Sony Computer Entertainment Inc. The ratings logo is a trademark of the Interactive Digital Software Association. Manufactured and printed in the U.S.A. THIS SOFTWARE IS COMPATIBLE WITH PLAYSTATION GAME CONSOLES WITH THE NTSC U.C. DESIGNATION. U.S. AND FOREIGN PATENTS PENDING.

www.freegamemanuals.com

Acclaim

www.acclaim.com

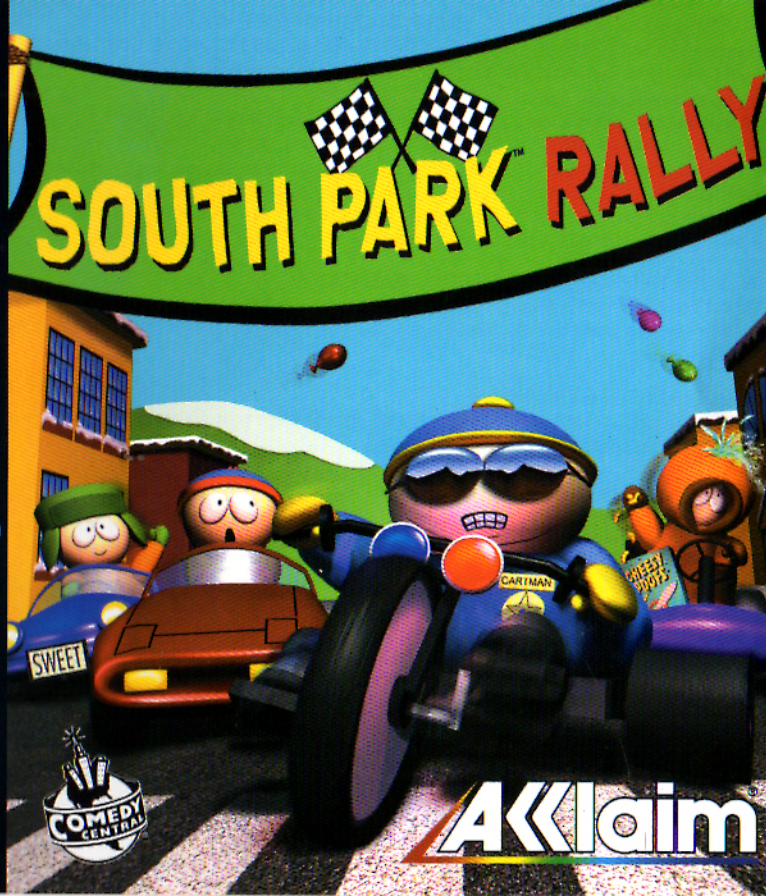


NTSC U/C

PlayStation

MATURE
M
CONTENT RATED BY
ESRB

SLUS-00984
21197



Acclaim

WARNING: READ BEFORE USING YOUR PLAYSTATION® GAME CONSOLE.

A very small percentage of individuals may experience epileptic seizures when exposed to certain light patterns or flashing lights. Exposure to certain patterns or backgrounds on a television screen or while playing video games, including games played on the PlayStation game console, may induce an epileptic seizure in these individuals. Certain conditions may induce previously undetected epileptic symptoms even in persons who have no history of prior seizures or epilepsy. If you, or anyone in your family, has an epileptic condition, consult your physician prior to playing. If you experience any of the following symptoms while playing a video game – dizziness, altered vision, eye or muscle twitches, loss of awareness, disorientation, any involuntary movement, or convulsions – IMMEDIATELY discontinue use and consult your physician before resuming play.

WARNING TO OWNERS OF PROJECTION TELEVISIONS:

Do not connect your PlayStation game console to a projection TV without first consulting the user manual for your projection TV, unless it is of the LCD type. Otherwise, it may permanently damage your TV screen.

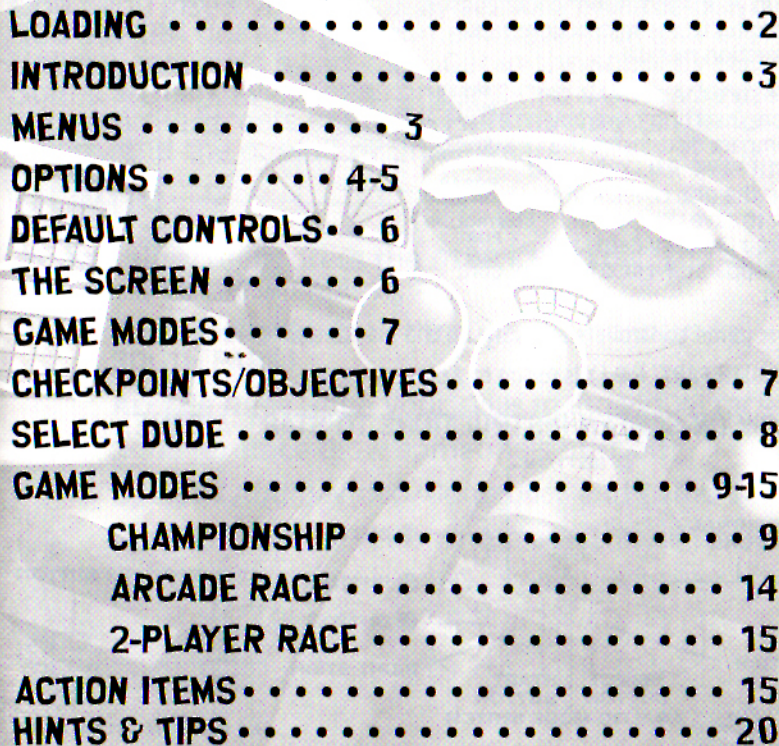
USE OF UNOFFICIAL PRODUCT:

The use of unofficial products and peripherals may damage your PlayStation game console and invalidate your console warranty.

HANDLING YOUR PLAYSTATION DISC:

- This compact disc is intended for use only with the PlayStation game console.
- Do not bend it, crush it or submerge it in liquids.
- Do not leave it in direct sunlight or near a radiator or other source of heat.
- Be sure to take an occasional rest break during extended play.
- Keep this compact disc clean. Always hold the disc by the edges and keep it in its protective case when not in use. Clean the disc with a lint-free, soft, dry cloth, wiping in straight lines from center to outer edge. Never use solvents or abrasive cleaners.

TABLE OF CONTENTS



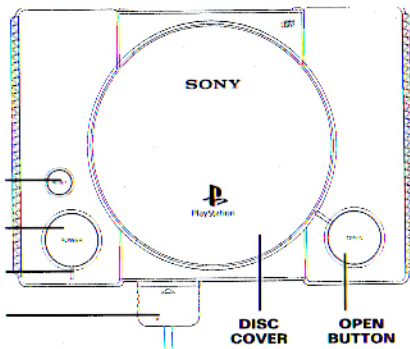
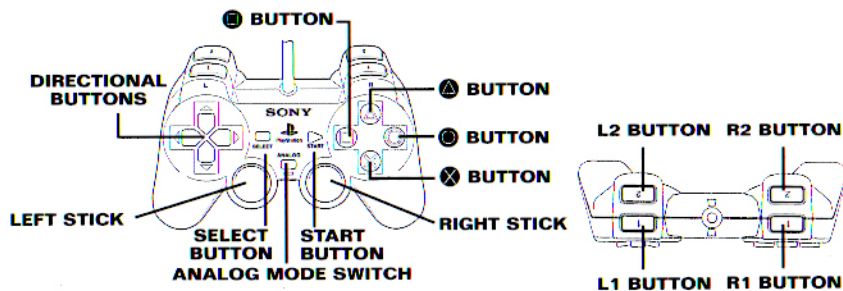
LOADING	2
INTRODUCTION	3
MENUS	3
OPTIONS	4-5
DEFAULT CONTROLS	6
THE SCREEN	6
GAME MODES	7
CHECKPOINTS/OBJECTIVES	7
SELECT DUDE	8
GAME MODES	9-15
CHAMPIONSHIP	9
ARCADE RACE	14
2-PLAYER RACE	15
ACTION ITEMS	15
HINTS & TIPS	20

LOADING

1. Set up your PlayStation® game console according to the instructions in its instruction manual.
2. Make sure the power is OFF before inserting or removing a compact disc. Insert the **SOUTH PARK™ RALLY** disc and close the disc cover. If you wish to save your game, insert a Memory Card (sold separately) into Memory Card Slot 1.
3. Insert game controllers and turn on the PlayStation® game console.

Note: **SOUTH PARK™ RALLY** is for up to 2 players.

FOLLOW ON-SCREEN INSTRUCTIONS TO START A GAME.



INTRODUCTION

Don't you just love the holiday season? The residents of **SOUTH PARK** do! And to commemorate each and every holiday, they hold a kart race. Get in the spirit by racing Stan, Cartman, Kyle, Kenny and their fellow residents through the streets of **SOUTH PARK** as they battle for Life, Liberty and the pursuit of Underwear!

MENUS

At the title screen, press the **START BUTTON**. You will see a menu with these choices:

Championship Race Race through the holidays in **SOUTH PARK!**

Arcade Race Hone your skills in individual races!

2-Player Race Blow someone's butt off!

Options Audio/Video/Controller and Game Setups

Credits View the folks who made this all possible.



OPTIONS

To set options, toggle through selections with the **DIRECTIONAL BUTTONS** to highlight an option category and press the **X BUTTON** to go to that menu. On the menu, highlight an option and cycle through settings with the **DIRECTIONAL BUTTONS**. When done, press the **A BUTTON** to return to the previous menu.

AUDIO

Effects Volume—Raise or lower the sound effect volume.

Music Volume—Raise or lower the music volume.

Stereo—When ON, all sounds will be heard in stereo.

Play Music Track—Pick a delightful ditty from our playlist.

PLAYER 1 CONTROLS

Feel free to map the listed controls to any button on your controller. Remember to highlight "**ACCEPT**" and press the **X BUTTON** to accept all of your changes. If you want to return the controls to their original status, highlight "**DEFAULT**" and press the **X BUTTON**. Press **O** to scroll to the menu items at the right of the screen.

PLAYER 2 CONTROLS

Same as Player 1 Controls but for Player 2!

VIDEO SETUP

2-Player Split—In a 2-player game, choose to play with the screen split horizontally or vertically.

Center Screen—Use the **DIRECTIONAL BUTTONS** and the **X BUTTON** to center the game screen on your TV.

GAME OPTIONS

CPU Character Type—Choose to play against different character sets. Choices include Kids #1, Kids #2, Adults #1, Adults #2, Cameo #1, Cameo #2, Skins and Random.

Random Checkpoints—When unlocked, set to ON (checkpoints appear in different spots) or OFF (checkpoints always appear in the same place). Some races are not affected.

CPU Cars in 2-Player—You can add some spice to your 2-player game by adding some CPU controlled racers when you turn this option ON.

LOAD UNLOCKED DATA

Load unlocked characters, tracks and races.

SAVE UNLOCKED DATA

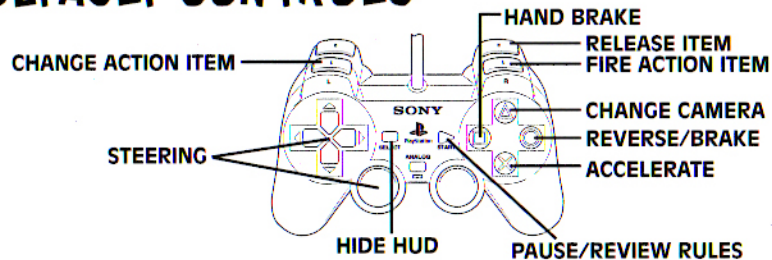
Save your unlocked characters, tracks and races.

CHEAT SHEET

View your unlocked items and see what's left to accomplish! Available when unlocked.



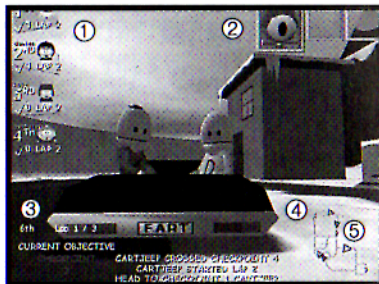
DEFAULT CONTROLS



THE SCREEN

Here's all the info you'll ever need:

- 1 Player Status Icons (color background matches color of icon on map)
- 2 Action Items
- 3 Current Objective
- 4 Map
- 5 Circle Shows Puck Location



GAME MODES

CHOOSE FROM THREE MODES

CHAMPIONSHIP—Compete against your neighbors in the spirit of the holidays!

ARCADE RACE—Select individual scenarios to hone your skills!

2-PLAYER RACE—You and your compatriots can duke it out in any unlocked scenario or in an Ass Battle!

CHECKPOINTS/OBJECTIVES

During your scenic tour of **SOUTH PARK**, you will notice large numbered, colored checkpoints. If you check the objectives for each race, some will require you to run over these checkpoints to complete a lap. For example, Rally Days #1 asks that you run over 4 checkpoints in numerical order to complete a lap. Additionally, other race objectives require you to pick up and drop off objects at checkpoints. Keep this in mind as you race to the finish!



SELECT DUDE

Move using the **DIRECTIONAL BUTTONS** to choose which dude will carry you to victory. Press the **X BUTTON** to confirm your selection.

When you start a new game, the following characters are available:

1. Stan



2. Kyle



3. Cartman



4. Kenny



5. Wendy



6. Chef



7. Officer Barbrady

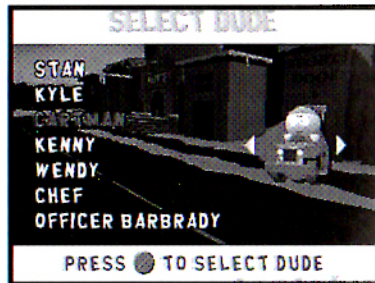


8. Uncle Jimbo



Other cars can be unlocked in Championship Mode. Some by merely winning, others for harder and more daring stunts.

8



GO ALREADY!

OK...you've chosen Championship and chosen a car. In Championship, that's all you need to do—the game automatically chooses the track you'll compete on. In all other modes, however, you get to select the track of your choice. Do so by cycling through the tracks with the **DIRECTIONAL BUTTONS**, then pressing the **X BUTTON** to select it.

CHAMPIONSHIP

Compete against your fellow **SOUTH PARK** natives in a host of holiday races! Once you complete a race and track in Championship, it's unlocked and can be saved to your Memory Card (if you have one inserted in Memory Card Slot 1) for use in Arcade races. You start your Championship with five credits, and lose one each time you fail to beat a race. Lose all five and you must start the Championship again.

RACE TYPES

RALLY DAYS #1

This is a race to the finish! Cross all four checkpoints in numerical order. This is counted as a lap. Complete 3 laps to complete this race.

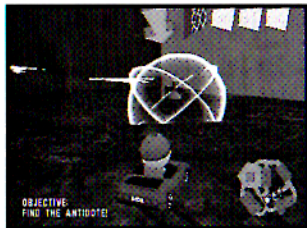


9



RALLY DAYS #2

Collect the trophy and run! All the other players will be after you in this fast-paced version of tag. Bump or shoot opponents to grab the trophy from them. Cross the 4th checkpoint with trophy in hand and you're the winner!

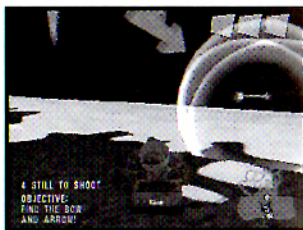


COW DAYS

Everyone has Mad Cow Disease and there's only enough antidote for one of you! Hold on to the cure until you are disease free to win!

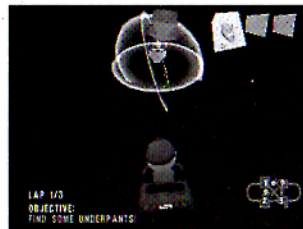
VALENTINE'S DAY

Find the bow and arrow. Shoot your fellow man (or woman) with a love arrow (you'll know they've been shot because their indicator arrow will disappear). Be the first to shoot them all to come up roses in this event.



SPRING CLEANING

Grab a pair of underpants and cross the checkpoints three times in numerical order. Be warned! There aren't enough undergarments for all of the racers so hold on to your shorts!



READ-A-BOOK DAY

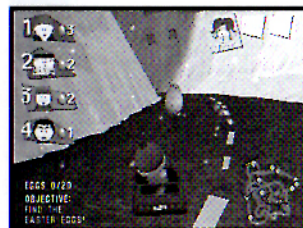
Chicken Lover has been pardoned to promote literacy. While he's out, you must protect the chickens! Collect up to 4 chickens and deposit them at the drop-off point near the Police Station. Bump or shoot opponents to grab their chickens.



The first contestant to save 10 chickens rules!

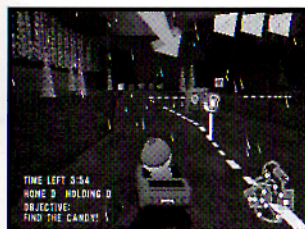
EASTER

The Easter Bunny has dropped South Park's eggs all over the mountain. Be the first to collect 20 Easter eggs to win. Luckily, your fellow racers can't steal your eggs in this race!



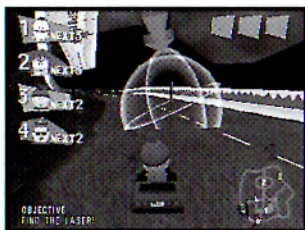
BIG GAY ALS BIG GAY PINK LEMONADE

Each table will, randomly, request a glass of that cool refreshing drink. Be the first to deliver your 4 glasses of pink lemonade to the correct table to win.



HALLOWEEN

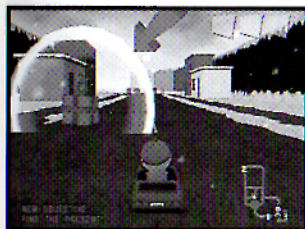
Grab up to 4 candies at a time and take them to the candy check. Drop off the most candies before curfew to win!



MEMORIAL DAY

Collect the ultra-sophisticated laser device and charge it up on all four checkpoints. Cross all four of these checkpoints with the laser in-hand to win!

FOURTH OF JULY
Race over the checkpoints in numerical order. When all four checkpoints have been activated, you've completed a lap. The first player to complete 3 laps is the winner!



CHRISTMAS DAY

Find and collect the present. Race to the checkpoint flashing on the screen. The first player to cross checkpoint four with the present after all checkpoints have been crossed in order is the winner.



THANKSGIVING

Yum, yum! Eat 'em up! Collect 20 Thanksgiving turkeys for the poor and ring the bell to attract your well-deserved media attention to win this race. Since this is a charity race, turkeys can't be stolen from other racers.



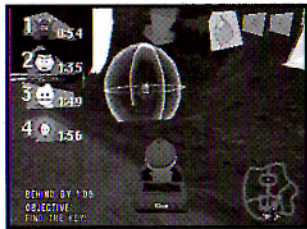
12



13

MILLENNIUM NEW YEAR'S EVE

As foretold by Nostradamus and the **SOUTH PARK ENQUIRER**, Satan is going to destroy the world on the Millennium New Year's Eve. To achieve this goal, Satan must charge his Dimensional Key for 2 minutes. Grab that key and hold onto it for 2 minutes to win!



ARCADE RACE

Practice your skills as you race with any character, on any track and any objective that you've unlocked in Championship Mode! Hey, we'll give you a break and unlock one track and race more than you've finished in Championship Mode just so you can practice before the big game. And remember, practice makes perfect...or something like that.



2-PLAYER RACE

Race a friend in this fast paced 2-player mode (as well as all scenarios you've unlocked in Championship Mode)!

ASS BATTLE

Each player starts with 4 asses floating around their cart. Use Action Items to shoot the ass off of your opponents. Be the last man standing with at least one ass and you're the winner!



ACTION ITEMS

You'll need some help to knock those obviously lacking in the appropriate holiday spirit out of the race. These Action Items may just do the trick!

The Action Items in **SOUTH PARK RALLY** are broken up into different groups. You can tell them apart by their box color. When you pick up a box of a certain color, you get a random gadget.

All Action Items are activated by pressing the **R1 BUTTON** except for the Terrance Turbo, Weight Gain 4000 and Caffeine (see next page) which are activated instantly when collected.



YELLOW BOX ITEMS

MR. MACKEY BALLOON HEAD GADGET

This item fires a psychedelic peace sign at the player. If it hits, the player's head expands and they float up above the earth!



BARF



Create a puddle of fun as you watch your opponents slow down to a crawl as they attempt to drive through your splat of sticky goo!

MR. HANKEY

Mr. Hankey will protect you from danger, whether from bad Action Items or items fired at you.



KITTY



Unleash the whirlwind of destruction that is Kitty! When you fire Kitty at your fellow racers, Kitty will home-in and blow them out of the way!

PURPLE BOX ITEMS

ANAL PROBE

The alien anal probe comes out of your driver's rear and fires a tracking laser that makes your opponents sing-a!



EXPLOSIVE DIARRHEA

Explosive diarrhea has the smallest range of all the mines, but the most punch!

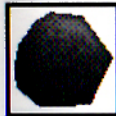
WEIGHT GAIN 4000

This pickup drastically increases your mass, allowing you to ram through your opponents with impunity. Beefcake!



RED BOX ITEMS

CHOCOLATE SALTY BALLS



Are your opponents starting to look like they could use a pick-me-up? Well, let them suck on some Chocolate Salty Balls while you whiz to victory!

RATS

Hitting rats makes the road extremely slippery with a wet, sloppy trail of blood. Dangerous, yes. Funny...yes!



TERRANCE TURBO



Fires immediately on pickup. Just like eating beans!





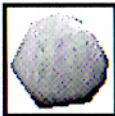
HERPES

This lovely pick up will win your opponents a date with Frida the hooker (whether they want it or not!). Unfortunately for them, she'll leave them with a fond remembrance of their time together – herpes! Just like in life, herpes is with you to the end and multiple trips with Frida will open multiple red dots.

GREEN BOX ITEMS

CHEESY POOFS

Cheesy Poofs are a bouncing, scattering set of projectiles that explode into a cloud of cheese dust when they strike!



MEXICAN STARING FROG

When deployed, this mine turns all in its vicinity to stone. Player momentum is locked and they lose control. Use it when someone is hot on your tail!



PHILLIP PHART

You control this gas-powered turbo. Save them for when you need that extra burst to bring up the rear!



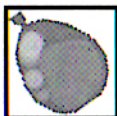
UNDERWEAR GNOMES

Underwear Gnomes march out, track their target and collect pickups and action items from opposing players, then disappear like magic!

BLUE BOX ITEMS

WATER BALLOON

The water balloon is a mortar-style projectile that strikes your opponents with a big splash. Hold down the **FIRE BUTTON** for a more powerful shot.



DECOY COW

The decoy cow is a fake cow that, when dropped, looks like all the other cows. Should a racer bump into said decoy cow, it will rupture, sending the car flying!



CAFFEINE

Automatically zooms your car to blazing speeds in a double cappuccino blitz!



SPARKY THE DOG

When released, Sparky will chase the nearest car, grab on and stop the car cold with animal passion.



ASSORTED ITEMS

SPOOKY-VISION

Spooky-Vision can appear in any box at any time, so beware! Spooky-Vision will bring up a vision of scary face to block your view and prevent you from seeing the road!



PINKEYE

Pinkeye is the rarest and most powerful of the pick-ups. It turns around all players (except the one who picks it up), reverses their steering, makes their eyes pink and puffy and reduces their reaction time.

HINTS & TIPS

- Place mine pick-ups strategically (i.e., drop the Decoy Cow in with the real cows to really throw your opponents for a loop!).
- There's a Continue Coin on every level of Championship Mode. If you're really low in the rankings, stop trying to win and find the coin...and do better next time!
- Make sure you keep an eye on the map. Pucks (e.g., the trophy in Rally Days #1, the eggs in Easter) tend to spontaneously appear. Try to go for the pucks that don't have any CPU opponents near them as they're quite good at snapping up the prize!

- Cut the corners in order to get the tightest racing line. Go off road if necessary.

ACCLAIM® LIMITED WARRANTY

ACCLAIM warrants to the original purchaser only of this ACCLAIM software product that the medium on which this software program is recorded is free from defects in materials and workmanship for a period of ninety (90) days from the date of purchase. This ACCLAIM software program is sold "as is," without express or implied warranty of any kind, and ACCLAIM is not liable for any losses or damages of any kind resulting from use of this program. ACCLAIM agrees for a period of ninety (90) days to either repair or replace, at its option, free of charge, any ACCLAIM software product, postage paid, with proof of date of purchase, at its Factory Service Center. Replacement of the software product, free of charge to the original purchaser (except for the cost of returning the software product) is the full extent of our liability.

This warranty is not applicable to normal wear and tear. This warranty shall not be applicable and shall be void if the defect in the ACCLAIM software product has arisen through abuse, unreasonable use, mistreatment or neglect. THIS WARRANTY IS IN LIEU OF ALL OTHER WARRANTIES AND NO OTHER REPRESENTATIONS OR CLAIMS OF ANY NATURE SHALL BE BINDING ON OR OBLIGATE ACCLAIM. ANY IMPLIED WARRANTIES APPLICABLE TO THIS SOFTWARE PRODUCT, INCLUDING WARRANTIES OF MERCHANTABILITY AND FITNESS FOR A PARTICULAR PURPOSE, ARE LIMITED TO THE NINETY (90) DAY PERIOD DESCRIBED ABOVE. IN NO EVENT WILL ACCLAIM BE LIABLE FOR ANY SPECIAL, INCIDENTAL, OR CONSEQUENTIAL DAMAGES RESULTING FROM POSSESSION, USE OR MALFUNCTION OF THIS ACCLAIM SOFTWARE PRODUCT.

Some states do not allow limitations as to how long an implied warranty lasts and/or exclusions or limitations of incidental or consequential damages so the above limitations and/or exclusions of liability may not apply to you. This warranty gives you specific rights, and you may also have other rights which vary from state to state.

This warranty shall not be applicable to the extent that any provision of this warranty is prohibited by any federal, state or municipal law which cannot be pre-empted.

Repairs/Service after Expiration of Warranty—If your software product requires repair after expiration of the 90-day Limited Warranty Period, you may contact the Consumer Service Department at the number listed below. You will be advised of the estimated cost of repair and the shipping instructions.

Acclaim Hotline/Consumer Service Department (516) 759-7800

South Park TM & © 1999 Comedy Central. All Rights Reserved. Acclaim® & © 1999 Acclaim Entertainment, Inc. All Rights Reserved. South Park Rally Developed by Tantalus Interactive. All Rights Reserved. Chef's Luv Shack Developed by Acclaim Studios Austin. All Rights Reserved. Marketed by Acclaim. Distributed by Acclaim Distribution, Inc., One Acclaim Plaza, Glen Cove, NY 11542-2777.

www.acclaim.com