

# T2™

TERMINATOR 2  
JUDGMENT DAY



3 billion lives will end on Judgment Day and The War Against the Machines will begin. Terminate the T-1000... or it's hasta la vista, baby!



You can change history if you believe in no fate



Blast open the T-1000 like a tin can with your 10 gauge shotgun

When Spider-Man teams up with the X-Men, you know there's trouble... especially when the villainous Arcade has revenge on his mind!!!

## SPIDER-MAN X-MEN™ ARCADE'S REVENGE



Web-slinging, wall-climbing action required to get out of this mess



Wolverine's razor-sharp Adamantium claws slice through this thug-in-a-box

## THE SIMPSONS™ BART'S NIGHTMARE



If you've got too much homework, do what Bart does - go to sleep instead!

Join "Bart's Nightmare" and zoom through the sky as Bartman, enter the world of Itchy and Scratchy, battle Homer Kong and more!

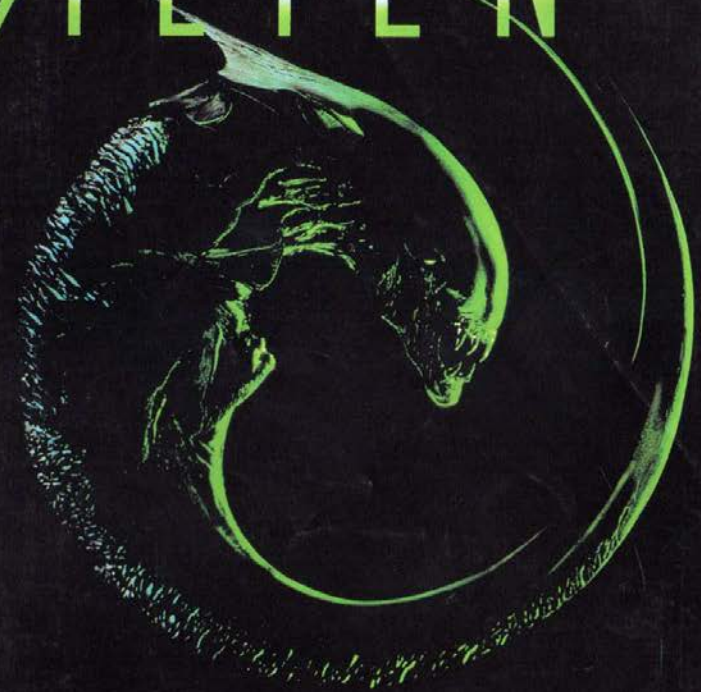


The Blue Demon is no match for you in the Temple of Maggie



Bartzilla's not just big and green... he's angry!

# ALIEN 3™



INSTRUCTION BOOKLET

**SUPER NINTENDO**  
ENTERTAINMENT SYSTEM



**AKkaim**  
entertainment, inc.

Marketed by LJN, Ltd., Distributed by Akkaim Distribution, Inc., 71 Audrey Avenue, Oyster Bay, New York 11771

Printed in Japan.



**SUPER NINTENDO**  
ENTERTAINMENT SYSTEM

**WARNING: PLEASE READ THE ENCLOSED CONSUMER INFORMATION AND PRECAUTIONS BOOKLET CAREFULLY BEFORE USING YOUR NINTENDO® HARDWARE SYSTEM OR GAME PAK.**



LICENSED BY



NINTENDO, SUPER NINTENDO ENTERTAINMENT SYSTEM AND THE OFFICIAL SEALS ARE REGISTERED TRADEMARKS OF NINTENDO OF AMERICA INC. ©1991 NINTENDO OF AMERICA INC.

THIS OFFICIAL SEAL IS YOUR ASSURANCE THAT NINTENDO HAS APPROVED THE QUALITY OF THIS PRODUCT. ALWAYS LOOK FOR THIS SEAL WHEN BUYING GAMES AND ACCESSORIES TO ENSURE COMPLETE COMPATIBILITY WITH YOUR SUPER NINTENDO ENTERTAINMENT SYSTEM. ALL NINTENDO PRODUCTS ARE LICENSED BY SALE FOR USE ONLY WITH OTHER AUTHORIZED PRODUCTS BEARING THE OFFICIAL NINTENDO SEAL OF QUALITY.

## CONTENTS

<b>URGENT COMMUNIQUE</b>	<b>2</b>
<b>THE ALIEN HORROR LIVES AND THRIVES!</b>	<b>3</b>
<b>BEFORE YOU START STALKING YOUR PREY</b>	<b>7</b>
<b>YOUR CONTROLS</b>	<b>9</b>
<b>YOUR STATUS</b>	<b>11</b>
<b>UTILIZING FURY 161 TERMINAL POSTS</b>	<b>12</b>
<b>ALIEN BESTIARY</b>	<b>16</b>
<b>WEAPONS AND INVENTORY</b>	<b>23</b>
<b>EXPLORING FURY 161</b>	<b>29</b>
<b>SURVIVAL TIPS</b>	<b>31</b>



## URGENT COMMUNIQUE

F161-C-WYCORP-NTCMCN-01500  
...URGENT...CODE RED ALERT...MULTIPLE  
XENOMORPH PRESENCE CONFIRMED ON  
FIORINA 161...SEVERAL PRISONERS CON-  
FIRMED DEAD...NESTING ACTIVITIES SUS-  
PECTED NEAR DISABLED CENTRAL POWER  
GENERATORS...PRIME DIRECTIVE: DO NOT  
DESTROY XENOMORPHS...PRISONERS ARE  
EXPENDABLE...REPEAT: DO NOT DESTROY  
XENOMORPHS...PRISONERS ARE EXPEND-  
ABLE...RESCUE SHIP DISPATCHED... ETA:  
12 HOURS...WEYLAND-YUTANI NETWORK  
COMCON 01500 OUT...ENDMSG

## THE ALIEN HORROR LIVES...AND THRIVES!

YOU ARE RIPLEY, A C-3 GRADE LIEUTENANT FOR THE WEYLAND-YUTANI CORPORATION. AFTER BARELY SURVIVING AN ENCOUNTER WITH THE ALIEN XENOMORPH LIFE FORMS, YOU WERE RETURNING TO EARTH IN HYPERSLEEP ABOARD YOUR SHIP, THE SULACO. THE SULACO MALFUNCTIONED, JETTISONING THE EMERGENCY ESCAPE VEHICLE WITH THE CREW'S CRYOTUBES TOWARDS FIORINA "FURY" 161, A NEARLY ABANDONED MAXIMUM SECURITY WORK PRISON DEEP IN SPACE. YOU AWOKE TO FIND YOURSELF STRANDED ON THIS ISOLATED PLANET, THE ONLY SURVIVOR OF THE CRASH.

THE ONLY HUMAN SURVIVOR, THAT IS.

**BECAUSE THE ALIENS YOU THOUGHT YOU'D LEFT BEHIND, THE LIVING NIGHTMARES YOU'D HOPED, YOU'D PRAYED, YOU'D NEVER SEE AGAIN ARE WITH YOU. AND THE HORROR YOU THOUGHT WAS OVER IS BEGINNING ANEW.**

**SOMEWHERE IN FURY 161, A QUEEN ALIEN IS SPAWNING DOZENS, IF NOT HUNDREDS, OF OFFSPRING THAT FEED ON FLESH. THE ALIEN EGG PODS ARE EVERYWHERE, BUT THAT'S ONLY THE START OF YOUR PROBLEMS. THE ALIENS MULTIPLY BY INVADING HUMAN BODIES AND GROWING INSIDE THEM, AND THEY'VE KIDNAPPED THE ENTIRE POPULATION OF FURY 161! YOU'VE LIVED THROUGH THIS ONCE BEFORE.**

**SOMEHOW, YOU SURVIVED. NOW, YOU MUST FACE THE ALIENS AGAIN, AND STOP THEM ONCE AND FOR ALL! ARMED WITH YOUR WEAPONS AND YOUR WITS, YOU ARE ON A MISSION OF SURVIVAL. YOUR**



**OBJECTIVES ARE CLEAR: FREE THE PRISONERS THAT HAVE BEEN TRAPPED IN ALIEN COCOONS, ELIMINATE THE ALIEN OFFSPRING THAT ARE INFESTING FURY 161, AND DESTROY THE QUEEN NESTING DEEP WITHIN THE PRISON. IF THIS WEREN'T ENOUGH, ALL OF THIS MUST BE COMPLETED BEFORE THE WEYLAND-YUTANI SHIP ARRIVES AND GIVES THE XENOMORPHS AN OPPORTUNITY TO ESCAPE AND INFEST OTHER WORLDS.**

**YOU ARE ENGAGED IN THE MOST FRIGHTENING LIFE OR DEATH STRUGGLE IMAGINABLE, AND THE ODDS ARE STACKED AGAINST YOU.**

## **BEFORE YOU START STALKING YOUR PREY**

- 1. MAKE SURE THE POWER SWITCH IS OFF.**
  - 2. INSERT THE ALIEN3™ GAME PAK AS DESCRIBED IN YOUR SUPER NINTENDO ENTERTAINMENT SYSTEM™ MANUAL.**
  - 3. TURN THE POWER SWITCH ON.**
- WHEN YOU SEE THE ALIEN3™ LOGO ON THE SCREEN, YOU WILL BE PRESENTED WITH TWO OPTIONS. USE THE UP AND DOWN CONTROL PAD ARROWS TO HIGHLIGHT THE DESIRED OPTION AND USE THE START BUTTON TO CHOOSE ONE OF THE FOLLOWING:**

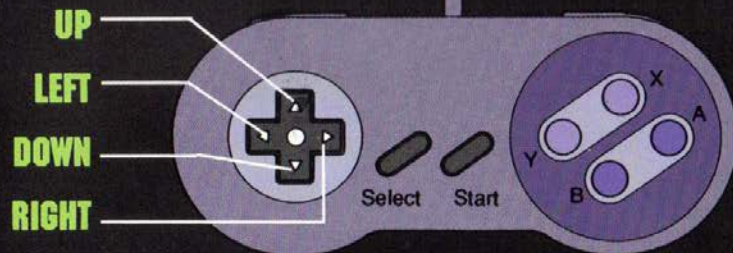
GAME OPTIONS ENABLES YOU TO CHOOSE EASY, NORMAL, OR HARD LEVELS OF DIFFICULTY, AND TO DECIDE WHETHER YOU WANT STEREO OR MONAURAL SOUND.

CONTINUE ENABLES YOU TO BEGIN A GAME FROM A LEVEL FOR WHICH YOU HAVE A PASSWORD.

START GAME BEGINS THE GAME IMMEDIATELY.

IF YOU WAIT A MOMENT, CHOOSING NEITHER OF THESE OPTIONS, YOU'LL SOON SEE THE SULACO ON YOUR SCREEN AND WITNESS THE EMERGENCY THAT STRANDED YOU ON FURY 161. WHEN YOU'RE READY TO FACE THE ALIEN HORRORS INFESTING THIS ISOLATED DEEP-SPACE PRISON, PRESS THE START BUTTON.

## YOUR CONTROLS



TO WALK LEFT OR RIGHT, USE THE LEFT AND RIGHT CONTROL PAD ARROWS.

TO CROUCH, USE THE DOWN CONTROL PAD ARROW.

TO CRAWL TO THE LEFT OR RIGHT, PRESS DOWN TO CROUCH, THEN PRESS THE LEFT OR RIGHT CONTROL PAD ARROWS.

TO JUMP, PRESS THE B BUTTON.

TO CLIMB A CHAIN OR LADDER, USE THE UP CONTROL PAD ARROW.

**TO ACTIVATE/DEACTIVATE MOTION TRACKER, PRESS THE SELECT BUTTON.**

**TO FIRE THE PULSE RIFLE, PRESS THE A BUTTON.**

**TO FIRE THE GRENADE LAUNCHER, PRESS THE X BUTTON.**

**TO FIRE THE FLAME THROWER, PRESS THE Y BUTTON.**

**TO USE THE BLOWTORCH, PRESS THE Y BUTTON, WHILE STANDING IN FRONT OF SOMETHING WELDABLE.**

**WHEN YOU FIRE A WEAPON, YOUR DISPLAY WILL AUTOMATICALLY SWITCH TO THE ICON OF THAT WEAPON AND INDICATE HOW MUCH AMMUNITION IS REMAINING.**

**TO SCROLL THROUGH THE AMMO ICONS WITHOUT FIRING THE WEAPONS, PRESS THE L OR R BUTTON.**

**TO PAUSE A GAME, PRESS THE START BUTTON.**

**TO RESUME A GAME, PRESS THE START BUTTON AGAIN.**

**TO ABORT THE GAME, PRESS THE SELECT BUTTON, START BUTTON, L BUTTON AND R BUTTON SIMULTANEOUSLY.**

## YOUR STATUS

**AS YOU NEGOTIATE YOUR WAY THROUGH FURY 161 IN YOUR QUEST TO DESTROY THE QUEEN ALIEN AND HER NEST OF EGGS, YOU WILL BE HELPED BY HAVING THE FOLLOWING INFORMATION READILY AVAILABLE TO YOU:**

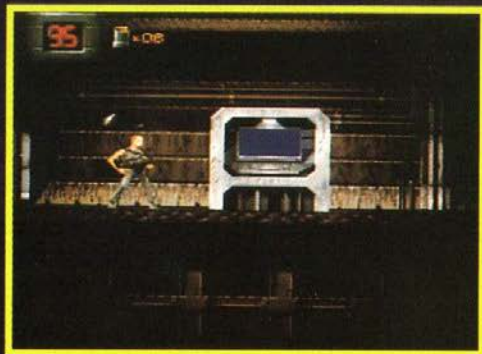
**CURRENT  
WEAPON /  
AMMO  
REMAINING**

**STRENGTH  
REMAINING**



## DEFINING MISSION OBJECTIVES: TERMINAL POSTS

AT VARIOUS LOCATIONS THROUGHOUT FURY 161 YOU WILL FIND TERMINAL POSTS THAT WILL HELP YOU TRACK YOUR PROGRESS BY DEFINING SPECIFIC MISSIONS AS YOU NEGOTIATE YOUR WAY THROUGH THE PRISON COMPLEX.



TO ENTER A TERMINAL POST, POSITION YOURSELF IN FRONT OF THE TERMINAL AND PRESS THE UP CONTROL PAD ARROW. YOU WILL BE PRESENTED WITH A LIST OF MISSION OPTIONS.



TO CHOOSE A MISSION OPTION, USE THE UP AND DOWN CONTROL PAD ARROWS TO HIGHLIGHT THE MISSION YOU WANT, THEN PRESS THE X OR Y BUTTON. THE TERMINAL SCREEN WILL THEN DISPLAY A SENSOR SCAN OF THE AREA OF FURY 161 RELEVANT TO THE MISSION, AS WELL AS INFORMATION VITAL TO COMPLETING THE MISSION YOU HAVE CHOSEN. USE THE CONTROL PAD ARROWS TO VIEW THE COMPLETE SCAN. TRAPPED PRISONERS APPEAR AS GREEN DOTS ON THE SENSOR SCREEN.





**TO ACCEPT A MISSION OR REVIEW OTHER MISSIONS, USE THE UP AND DOWN CONTROL PAD ARROWS WHEN THE TERMINAL POST PROMPT PRESENTS YOU WITH THOSE CHOICES.**

**ONCE YOU ACCEPT A MISSION, YOU MAY EXAMINE BLUEPRINTS FOR THE RELEVANT AREA OF FURY 161 OR REVIEW THE MISSION OBJECTIVES BY USING THE UP AND DOWN CONTROL PAD ARROWS.**



**TO EXIT THE TERMINAL AND RETURN TO GAME PLAY, CHOOSE THE EXIT TERMINAL OPTION ON THE TERMINAL PROMPT.**

**NOTE: TO SECURE THE SPECIFIC AREA OF FURY 161 YOU ARE EXPLORING, YOU MUST COMPLETE ALL MISSIONS BEFORE MOVING ON TO THE NEXT STAGE OF YOUR EXPLORATION. A TOTAL RECONNAISSANCE OF FURY 161 IS COMPRISED OF SEVERAL STAGES, EACH WITH SPECIFIC MISSION OBJECTIVES.**

## ALIEN BESTIARY

FURY161-C-MAINFRAME

INPUT: LT. RIPLEY

FILECODE: ALIEN GROWTH

CLEARANCE: ALLALL

SECURITY: CODE RED URGENT

ALL EYES

THIS IS LIEUTENANT RIPLEY OF THE WEYLAND-YUTANI CORPORATION. IF YOU'RE READING THIS FILE, IT PROBABLY MEANS I WASN'T ABLE TO DESTROY ALL OF THE ALIENS INFESTING FURY 161. MAYBE YOU'VE ENCOUNTERED THEM ALREADY, MAYBE NOT. EITHER WAY, IF YOU WANT TO SURVIVE, YOU'LL NEED THIS INFORMATION.

THE XENOMORPH ALIENS ARE HIGHLY EVOLVED KILLING MACHINES, THE MOST DEADLY BEINGS EVER ENCOUNTERED. EVEN THE YOUNGEST OF THESE CAN KILL, SO READ THIS FILE CAREFULLY.



THE FIRST STAGE OF ALIENS HATCH FROM THE ALIEN QUEEN'S LEATHERY EGG PODS. THEY SCURRY ON LONG, SPIDER-LIKE EGGS. I CALL THEM FACE-HUGGERS FOR REASONS WHICH ARE ALL TOO OBVIOUS IF YOU'VE ENCOUNTERED THEM. IN THE ALIEN LIFE-CYCLE, FACE-HUGGERS ARE ESSENTIALLY CARRIERS: THEIR FUNCTION IS TO IMPLANT AN ALIEN PARASITE INSIDE A HOST, WHETHER HUMAN OR

OTHER. AFTER THAT, THEY DIE. IF A FACE-HUGGER ATTACHES ITSELF TO YOUR HEAD, SHAKE YOURSELF RAPIDLY IN ANY DIRECTION TO BREAK FREE, OR IT WILL CAUSE YOU SUFFOCATION DAMAGE.

A FACE-HUGGER'S PARASITE GROWS INSIDE ITS HOST UNTIL IT'S LARGE ENOUGH TO BREAK FREE THROUGH THE HOST'S CHEST. ONCE LOOSE, THESE SNAKE-LIKE CHEST BURSTERS ARE FAST AND AGGRESSIVE. THEY



REAR UP LIKE COBRAS TO ATTACK, STRIKING AT THE HEADS AND TORSOS OF THEIR TARGET, OR SPITTING ACID AT THEM.

WHEN THE CHEST BURSTERS GROW LARGER, THEY BEGIN TO LOOK MORE LIKE FULL-GROWN ALIENS,

BUT LACK THE DEADLY GRACE OF THEIR ELDERS. THEY'RE GANGLY AND OFF-BALANCE, LIKE BAMBIS. ALIEN BAMBIS HUG THE GROUND LIKE STALKING CATS.



EVEN THOUGH THEY'RE AWKWARD THEY'RE STILL EXTREMELY DANGEROUS. WHEN THEY'RE NEAR, LISTEN FOR THE "HISSING" SOUND WHICH

MEANS THEY'RE ABOUT TO SPIT.

WHEN THE BAMBIS GROW, THEIR STALKING GETS MORE ADVANCED AND MORE DEADLY. DEVELOPING

ALIENS ARE VERY DELIBERATE HUNTERS. THEY STICK LOW TO THE GROUND, AND CAN POUNCE IN AN INSTANT, SO DON'T LET THEM GET TOO CLOSE!



WHEN THESE BECOME FULLY DEVELOPED ALIENS,



THEY CAN ATTACH THEMSELVES TO WALLS AND CEILINGS, MEANING THEY CAN ATTACK YOU FROM ANY ANGLE, OFTEN BEFORE YOU EVEN

NOTICE THEY ARE NEAR. BEWARE.

A FURTHER COMPLICATION: THE ALIENS APPEAR TO DISPLAY ADDITIONAL EVOLUTIONARY QUALITIES BEYOND SIMPLE GROWTH AND CHANGING BEHAVIOR, AND EACH ENSUING GENERATION DISPLAYS MARKEDLY INCREASED AGGRESSIVENESS: FIRST-GENERATION ALIENS APPEAR DARK GREY, SECOND-GENERATION ALIENS DARK BLUE, THIRD-GENERATION ALIENS ARE DARK GREEN, AND FOURTH-GENERATION ALIENS,

EVIDENTLY THE MOST MATURE AND ADVANCED FORM, ARE DEEP RED.



MOST IMPORTANTLY: THERE'S AN ALIEN QUEEN NESTING IN THE LEAD MOLD OF FURY 161'S CENTRAL POWER GENERATOR. SINCE ONLY

THE QUEENS LAY EGGS, IF SHE IS DESTROYED, THE ALIENS CAN'T MULTIPLY. I MUST THEREFORE EXTERMINATE HER TO PREVENT THE ALIENS FROM SPREADING FURTHER! MY PLAN IS TO STUN HER WITH AVAILABLE WEAPONRY, THEN DESTROY HER BY EITHER CRUSHING HER IN THE PISTONS OR BURYING HER IN MOLTEN LEAD.

THIS FILE WILL EITHER BE MY BLUEPRINT FOR

## WEAPONS AND INVENTORY

FURY161-C-MAINFRAME  
INPUT: WEYLAND-YUTANI  
FILECODE: INVENTORY.W  
CLEARANCE: ALLALL  
SECURITY: GREEN  
ALL EYES

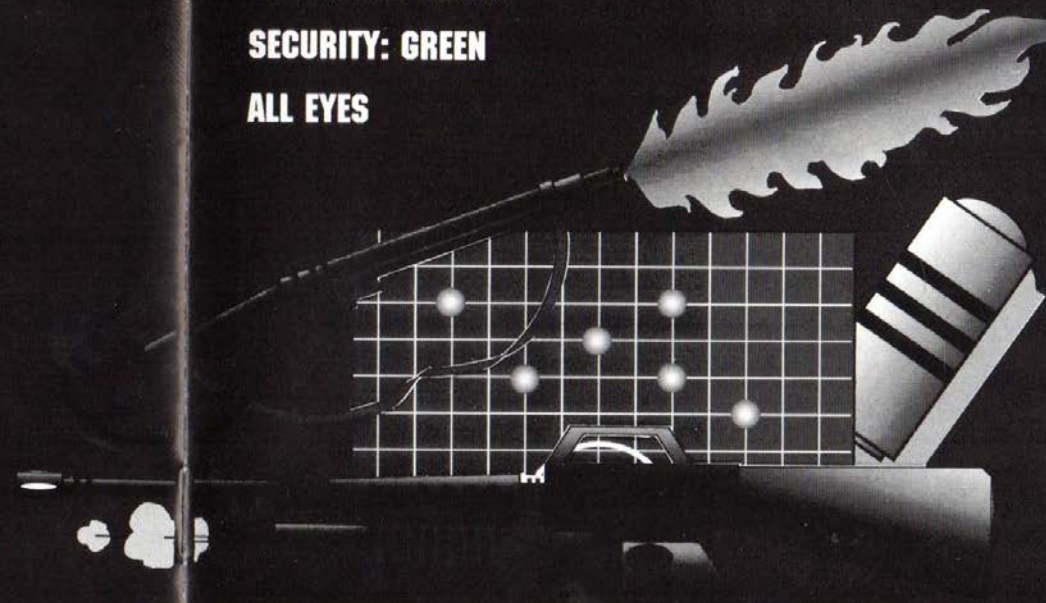
SUCCESS OR MY EPITAPH. IF I HAVE FAILED, USE THIS  
INFORMATION TO HELP YOU SURVIVE AND DESTROY  
THE ALIENS. THEY MUST NOT ESCAPE FURY 161. THEIR  
TERROR MUST END HERE.

GOOD LUCK.  
YOU'LL NEED IT.

RIPLEY OUT.

END OF FILE

FURY161-C-MAINFRAME



## PULSE RIFLE



**CLEARANCE: STANDARD ISSUE**

**RATE OF FIRE: 4 SHOTS/SECOND**

**CLIP SIZE: 100 ROUNDS/CLIP**

**RELOADING: TO RELOAD PICK UP RIFLE CLIPS LOCATED  
THROUGHTOUT FURY 161**

## GRENADE LAUNCHER



**CLEARANCE: STANDARD ISSUE; SUPPLEMENTAL  
TO PULSE RIFLE**

**RATE OF FIRE: 1 SHOT/SECOND**

**CLIP SIZE: 10 ROUNDS/CLIP**

**RELOADING: TO RELOAD PICK UP GRENADE CLIPS**

## FLAME THROWER



**CLEARANCE: NON-STANDARD ISSUE**

**SECURITY INDICATIONS: MAINTAIN IN SEALED STORAGE AREAS**

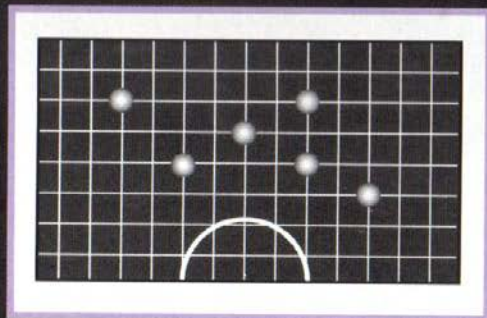
**RATE OF FIRE: 0.5 LITER/SECOND**

**CANNISTER SIZE: 10 LITERS/CANNISTER**

**REFUELING: MULTIPLE FUELS, MANUAL OR AUTOMATIC**

**CAUTION: FUEL VARIES BY COLOR: RED FUEL PRODUCES LOW-POWERED FLAME, GREEN PRODUCES MEDIUM-POWERED FLAME, BLUE FUEL PRODUCES HIGH POWERED FLAME. PICK UP FUEL CANISTERS TO REFUEL.**

## MOTION TRACKER

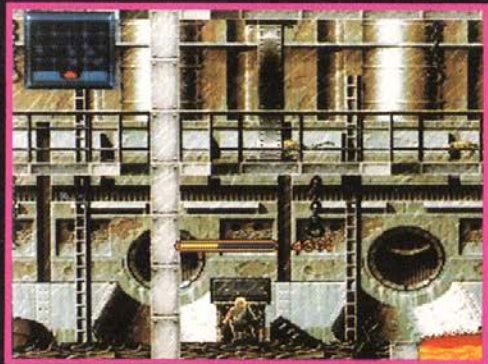


**INDICATIONS: FOR SENSING MOVEMENT OF PERSONNEL AND/OR INTRUDERS THROUGHOUT FURY 161 WORK STATION**

**ACTIVATION: SELECT BUTTON**

**RADIUS OF EFFECTIVENESS: APPROXIMATELY 3 TIMES NORMAL VISIBILITY**

## **BLOWTORCH**



**CLEARANCE: MAINTENANCE TEAM, STANDARD ISSUE**  
**INDICATIONS: FOR SEALING DOORS, REPAIRING DAMAGED PIPES AND WIRING**  
**RATE OF WELD: APPROXIMATELY 5 SECONDS**  
**FUEL NOTICE: BLOWTORCHES POSSESS AN UNLIMITED AMOUNT OF FUEL AND DO NOT NEED TO BE RELOADED**

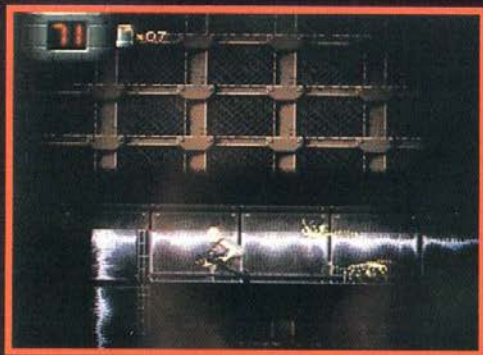
## **EXPLORING FURY 161**

**THE FURY 161 WORK STATION IS A COMPLEX NETWORK OF ROOMS, STORAGE AREAS, ELEVATOR SHAFTS AND AIR DUCTS. YOU WILL HAVE TO TAKE THE UTMOST CARE IN NEGOTIATING YOUR WAY THROUGH THE STATION: ALIENS COULD BE LURKING ANYWHERE!**

**TO OPEN DOORS, WALK INTO THEM AND PRESS THE UP CONTROL PAD ARROW.**



## SURVIVAL TIPS



**AIR DUCTS PROVIDE YOU WITH SHORTCUTS BETWEEN AREAS OF FURY 161. TO ENTER AN AIR DUCT FROM ABOVE, POSITION YOURSELF NEXT TO THE LADDER THAT EMERGES FROM THE DUCT, AND PRESS THE DOWN CONTROL PAD ARROW. TO ENTER FROM BELOW, POSITION YOURSELF BELOW THE LADDER, JUMP AND PRESS THE UP CONTROL PAD ARROW.**

**AIR DUCTS ARE GOOD WAYS TO AVOID PLACES WHERE THERE IS A HEAVY POPULATION OF ALIENS, BUT REMEMBER THAT THEY MAY BE USED BY ALIENS TOO, AND THAT THEY ARE CRAMPED PLACES: YOU WON'T BE ABLE TO JUMP OR DUCK.**

## NOTES

ALIEN3 TM & © 1993 Twentieth Century Fox Film Corporation. All rights reserved. Nintendo®, Super Nintendo Entertainment System™ and the official seals are registered trademarks of Nintendo of America Inc. LJN® is a registered trademark of LJN, Ltd. © 1993 LJN, Ltd. All rights reserved.

Terminator™2: Judgment Day © 1993 Carolco Pictures Inc.(U.S. & Canada); Carolco International N.V. (All Other Countries), Nintendo®, Super Nintendo Entertainment System™ and the official seals are registered trademarks of Nintendo of America Inc. LJN® is a registered trademark of LJN, Ltd. © 1993 LJN, Ltd. All rights reserved. SPIDER-MAN®, X-MEN™ and all other Marvel characters and the distinctive likenesses thereof are trademarks of Marvel Entertainment Group, Inc. and are used with permission. © 1993 Marvel Entertainment Group, Inc. All rights reserved. The Simpsons TM & © 1993 Twentieth Century Fox Film Corporation. All rights reserved. Acclaim® is a registered trademark of Acclaim Entertainment, Inc. © 1993 Acclaim Entertainment, Inc. All rights reserved. Printed in Japan.

## BRING AN ALIEN HOME, FREE!



"The Making of Alien<sup>3</sup>" is an exclusive look behind the scenes of "Alien<sup>3</sup>". It's free when you buy the Limited Edition Alien/Aliens Collector's Set!

- Spectacular never before released behind-the-scenes footage.
- Incredible special effects.
- Exclusive interviews with Sigourney Weaver, the Alien creator H. R. Giger, and others.
- A look back at "Alien" and "Aliens".

Available now on videocassette.

**\$39.98** SUGGESTED  
RETAIL PRICE



© 1993 FoxVideo, Inc. All Rights Reserved. FoxVideo™ and Twentieth Century Fox™ and their logos are trademarks of Twentieth Century Fox Film Corporation.

# NOTES

---

---

---

---

---

---

---

---

---

---

---

---

---

---

---

---

---

---

---

---

---

---

---

---

# NOTES

---

---

---

---

---

---

---

---

---

---

---

---

---

---

---

---

---

---

---

---

---

---

---

---