

U/SNS-AHZE-USA

INSTRUCTION MANUAL



MARVEL SUPER HEROES™ IN

MARVEL
COMICS

WAR OF THE GEMS™



CAPCOM®

SUPER NINTENDO
ENTERTAINMENT SYSTEM

MARVEL COMICS
WAR OF THE GEMS™
MARVEL SUPER HEROES™ IN

A SPECIAL MESSAGE FROM CAPCOM ENTERTAINMENT

Thank you for selecting MARVEL SUPER HEROES in WAR OF THE GEMS for your Super Nintendo Entertainment System. CAPCOM ENTERTAINMENT is very proud to bring you the heroic adventures of the Marvel Comics' legends.

MARVEL SUPER HEROES in WAR OF THE GEMS boasts 16-megs of high-resolution graphics and quality stereo sound. We hope you enjoy this thrilling new addition to your Super Nintendo library.

WARNING: PLEASE READ THE ENCLOSED CONSUMER INFORMATION & PRECAUTIONS BOOKLET BEFORE USING YOUR NINTENDO, HARDWARE SYSTEM OR GAME PAK.

THIS PRODUCT HAS BEEN RATED BY THE ENTERTAINMENT SOFTWARE RATING BOARD. FOR INFORMATION ABOUT THE ESRB RATING, OR TO COMMENT ABOUT THE APPROPRIATENESS OF THE RATING, PLEASE CONTACT THE ESRB AT 1-800-771-3772



CAPCOM ENTERTAINMENT, INC.
 475 Oakmead Parkway
 Sunnyvale, CA 94086



MARVEL SUPER HEROES and all MARVEL characters names and the distinctive likenesses thereof are trademarks of Marvel Characters, Inc., and are used with permission. Copyright © 1996 Marvel Characters, inc. All Rights Reserved.

Licensed by



Nintendo, Super Nintendo Entertainment System and the official seals are registered trademarks of Nintendo of America Inc. ©1991 Nintendo of America Inc.

©CAPCOM CO., LTD. 1996 ALL RIGHTS RESERVED. ©CAPCOM U.S.A., INC. 1996 ALL RIGHTS RESERVED. PRODUCED UNDER LICENSE FROM MARVEL CHARACTERS, INC



THIS OFFICIAL SEAL IS YOUR ASSURANCE THAT NINTENDO HAS APPROVED THE QUALITY OF THIS PRODUCT. ALWAYS LOOK FOR THIS SEAL WHEN BUYING GAMES AND ACCESSORIES TO ENSURE COMPLETE COMPATIBILITY. ALL NINTENDO PRODUCTS ARE LICENSED BY SALE FOR USE ONLY WITH OTHER AUTHORIZED PRODUCTS BEARING THE OFFICIAL NINTENDO SEAL OF QUALITY.



A Special Message from CAPCOM.....2
 Getting Started4
 Item Select Menu5

Table of Contents

Prologue: The Infinity Gems6
 Controlling the Super Heroes.....7
 Avenger's Training Center8
 The Marvel Super Heroes.....9
 Gems and Item Power-ups10
 Using Your Password11
 Survival Guide12
 Warranty13
 Hint Line and Game Counseling14

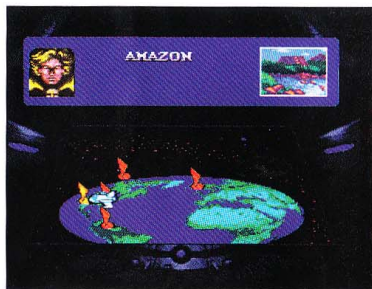
Getting Started

4

- 1 Check the power switch on your Super Nintendo Entertainment System. Make sure it is OFF before inserting or removing the Game Pak.
- 2 Insert your MARVEL SUPER HEROES in WAR OF THE GEMS Game Pak into your Super Nintendo Entertainment System and turn the power ON.
- 3 Watch the introduction and then press **START** when the title screen appears.
- 4 You have three options from the title screen. Select **GAME START** to begin a game, **PASSWORD** to enter a previous password (see page 16) or **OPTION MODE** to adjust the configuration of your buttons and switch the sound between stereo and mono (depending on your system.)



- 5 After selecting **GAME START** from the title screen, then select a stage from the Stage Select screen. Press the control pad up or down to highlight a stage then press **START** to choose the option. Select **YES** to move to the character select screen or **NO** to re-select a stage.



- 6 From the character select screen highlight a character and press **START**. Select your available items (for more, see page 6) and press **START** to begin play.



- 7 To end the game at any time, simply turn the power **OFF** on your Super Nintendo Entertainment System and remove your Game Pak.

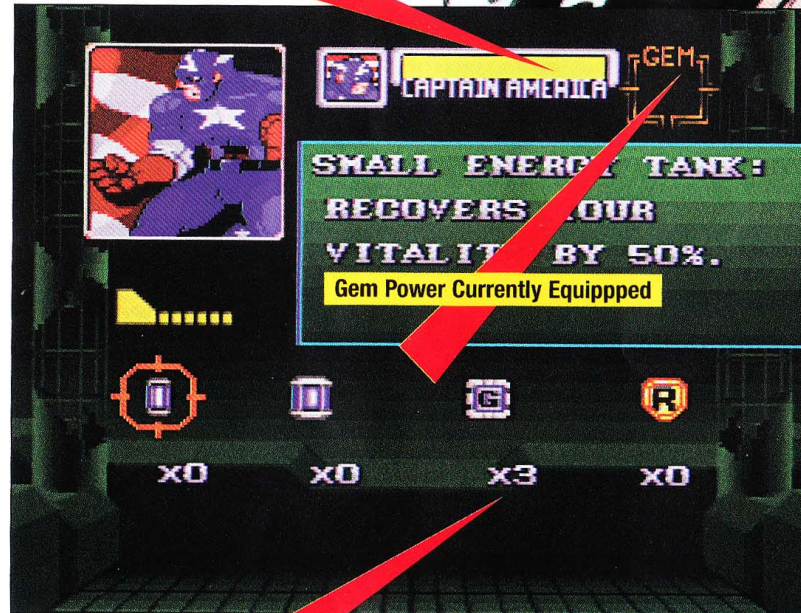
After selecting the stage and your Marvel Super Hero, you will see the Item Select Screen. The number of items you have available to use will

Item Select Screen

5

appear underneath the item's icon. Place the cursor on the item you want to use, and press the **Y** button. Press the **B** button to cancel your selection and change the gem you selected.

Remaining Vitality



Number of Gem Powers



6 Prologue: The Infinity Gems

The Infinity Gems number six: **Time, Space, Power, Reality, Soul** and **Mind**. It is said that the being who obtains these six gems will be omnipotent. Beings throughout the universe have struggled to control the gems.

Adam Worlock has sensed an evil force attempting to find the gems. To protect the Earth and the universe, Warlock has contacted the World's Greatest Heroes to help him confront this evil force. One gem has already been found, and is being used as a basis for locating the others.

Thanks to the advanced super-power computers at STARK Enterprises, they have identified some possible locations of the remaining Infinity Gems. Now they leave for the mortal hunt.

7 Controlling the Marvel Super Heroes

Using the controller, you will have access to all of the fighting skills and mutant abilities for each of the Super Heroes. But remember, control of mutant powers does not come easily and practice may mean the difference between life and death.

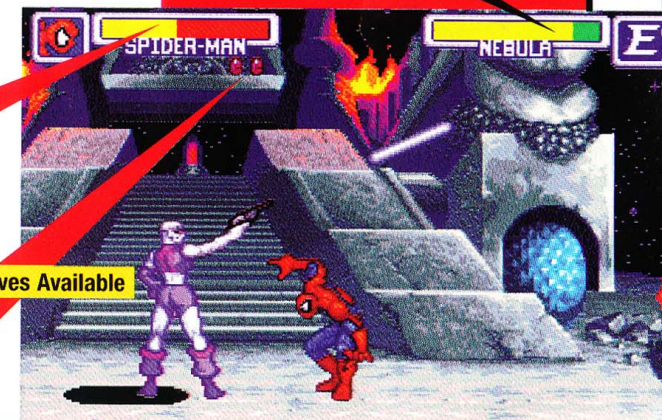
To unleash a special power you need to rapidly enter a series of movements on the control pad followed by the attack button.

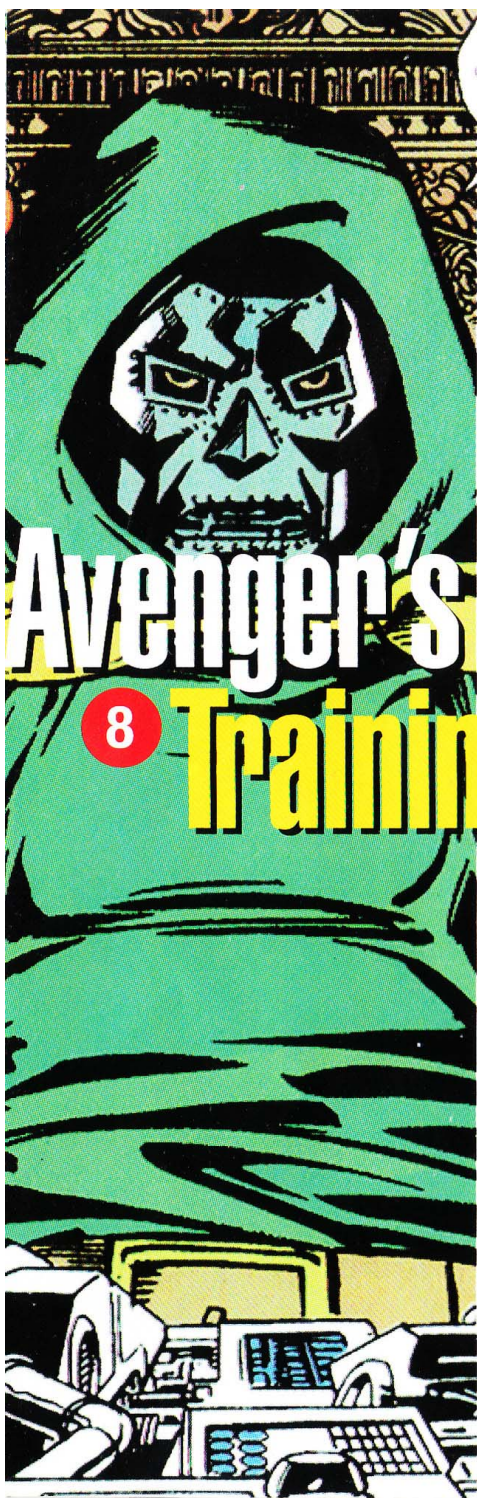
CONTROL	ACTION
Start ButtonStart GamePause Game
Select Button	..Cancels Selection onItem/Character Select
Control PadMove CharacterMove Cursor on Menus
Control Pad ▼	..Crouch
Y ButtonAttack
B ButtonJump

Enemy Life Meter

Super Hero Life Meter

Gem Special Moves Available





One of the first stages you can select is the Avenger's Training Center. This training center gives you the opportunity to practice battle techniques, special moves and Gem Power Moves. You can also get your password for continuing a previous game here. See page 15 for more on passwords.

You will be pitted against a holographic replica of one of the villains that are out to capture the Infinity Gems. Learn attack patterns, timing and how to chain multi-hit combos here to be more effective in battle.

After you have finished your training battle, you will return to the stage select screen. You can select the Avenger's Training Center as many times as you like.



Captain America 9

During World War II, a secret government experiment was conducted known as Project: Super Soldier. Steve Rogers took the Super Soldier Serum and became Captain America. Now the leader of The Avengers, he has realized his full human potential with the Super Soldier Serum. Armed with a Vibranium-Adamantium alloy shield, Captain America fights the evil and injustice that threatens freedom and liberty.



SPECIAL MOVES

Note: Move descriptions are for a character facing right. Moves are reversed for a character facing left

Charging Star

Press ▼◀▶ + Y BUTTON

Shield Slash

Press Directional Button twice in the same direction quickly, then press Y BUTTON

GEM POWER MOVE

Super Captain America

Press ▲▶▼ Y BUTTON.

Captain America puts his shield above his head and releases all his life force. All enemies on-screen will be damaged.

PROFILE

NameCaptain America

Real NameSteve Rogers

Height6 ft. 1 inch

Weight238 lbs.

PROFILE

Name.....Iron Man
Real NameAnthony Stark
Height.....6 ft.
Weight.....423 lbs.
(with armor)

Iron Man

While testing a secret weapon in Southeast Asia, industrial genius Tony Stark was injured and subsequently captured. In exchange for his weapon technology, his captors offered to nurse him back to health. Stark reluctantly agreed, but he secretly had a plan. He built a life-sustaining armor and equipped himself in it. It allowed him to escape and return home, but he cannot live for long without the aid of the armor. Stark has modified the design, expanded its defensive and offensive capabilities and now he uses his power as the golden avenger to battle any force that threatens the security of America or the world.

10

SPECIAL MOVES

Double Jump

Jump, then press the B BUTTON again while in the air

Repulsor

Press ▼◀▶ + Y BUTTON

Air Repulsor

Jump, then while in the air perform a Repulsor

Shell Crush

Jump, then while in air press ▶ twice quickly + Y BUTTON

Smart Bomb

Press ▼ twice quickly + Y BUTTON

GEM POWER MOVE

Heat Body

Press ▲▶▼ + Y BUTTON
Iron Man's suit energy becomes attack energy. When he releases the energy, all on-screen enemies will be damaged.



11

Wolverine

The man known only as Logan had his skeleton forcibly augmented with Adamantium, a nearly-indestructible metal. He has a super-healing ability that makes him incredibly resistant to physical harm, chemicals and poisonous gasses. Wolverine once worked as a secret agent for the Canadian government but would not follow their protocol. He severed his ties with the Canadian government and he later joined Professor Charles Xavier's mutant group — X-MEN.

PROFILE

Name.....Wolverine
Real NameLogan
Height.....5 ft. 2 in
Weight.....194 lbs.



SPECIAL MOVES

Wall Climb

Jump up to wall, then press ▲ or ▼ to climb wall

Rising Claw

Press ▶▼◀ + Y BUTTON

Running Claw

Press ▶ twice quickly + Y BUTTON

Diving Slash

Jump, then press ▼ + Y BUTTON

GEM POWER MOVE

Berzerker

Press ▲▶▼ + Y BUTTON

Wolverine brings his Rage level to a maximum for this move. His attack power increases, and he can shoot out bolts of claw energy.

PROFILE

Name.....Spider-Man

Real NamePeter Parker

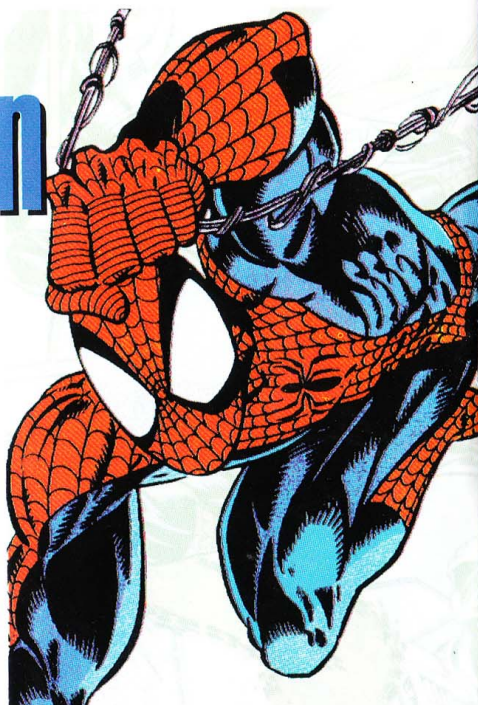
Height.....5 ft. 9 in.

Weight.....163 lbs.

Peter Parker became Spider-Man when he was bit by a radioactive spider. He obtained strange abilities that allowed him to stick to and climb walls. He originally aimed to enter show business with his new abilities using a spider costume and web-shooters he created. But when his Uncle Ben was killed by thieves he decided to become a Super hero, realizing that with great power comes great responsibility.

Spider-Man

12



SPECIAL MOVES

Wall Climb

Jump up to wall, then press ▲ or ▼ to climb wall

Web Shooter

Press ▼◀▶ + Y BUTTON

Web Wire

Press ▲ twice quickly + Y BUTTON.

While swinging on web, press Y BUTTON to attack

GEM POWER MOVE

Web Throw

Press ▲▶▼ + Y BUTTON.

Spider-man tangles up his opponent in his web and tosses them to the ground.

The Incredible Hulk

13



Dr. Robert Bruce Banner was in charge of the Gamma Radiation experiment. A teenager wandered into the test area right as the Gamma Bomb was about to explode. Banner jumped in and saved the boy, but was flooded with radiation himself. Now Banner has the ability to change at will into an incredibly strong jade giant — The Incredible Hulk.

SPECIAL MOVES

Grab Throw

Press ▼◀▶ + Y BUTTON

Hulk Tackle

Press ▶ twice quickly + Y BUTTON

Rock Crush

Press ▶▼◀ + Y BUTTON

GEM POWER MOVE

Hulk Bomber

Press ▲▶▼ + Y BUTTON

Hulk summons an earthquake and the shockwave rocks the ground and the air. All on-screen enemies will be damaged.

PROFILE

Name.....The Incredible Hulk

Real NameRobert Bruce Banner

Height.....7 ft. 5 in.

Weight.....1041 lbs.

When you defeat different boss enemies, you will clear the stage and automatically gain that character's gem. You must equip the gem before you can use it (see page 5). Gems offer you two features: Your Super Hero will jump higher or move quicker, and if you have the correct gem and Gem Power Item you will be able to perform a special Gem Power Move. Refer to the chart below for information on gem effects.

Gems



Gem	Effect
1	TIME Super Hero moves quicker
2	SPACE Super Hero jumps higher
3	POWER Super Hero attack power is increased
4	SOUL Super Hero vitality meter is extended
5	REALITY Reveals hidden items or power-ups
6	MIND Allows Psionic attacks

Items

There are two types of items you can collect by breaking open objects or by defeating enemy bosses. Some items may even just appear, but in most cases they are located in secret areas that are challenging to find.

The two types of items are Normal items, which are automatically applied to your Super Hero, and Equipment items, which need to be equipped from the Item Select Screen. Here is a short list of items you can use:

Item	Type	Effect
Small Energy Pack	NORMAL	Instantly recovers small amount of vitality
Large Energy Pack	NORMAL	Instantly recovers half the vitality meter
Small Energy Tank	EQUIPMENT	Recovers half the vitality meter when used
Large Energy Tank	EQUIPMENT	Recovers entire vitality meter when used
Gem Power Item (G)	EQUIPMENT	Allows you to execute Gem Power* Move
Recover Item (R)	EQUIPMENT	On Item Select Screen, use to revive a Super Hero

When you run out of lives, the game is over. You will find the password in the Avenger's Training Center. Select PASSWORD from the Training Menu, then press START. Write down the password. When you want to begin your game later, highlight PASSWORD from the title screen and press START.

Passwords

- Use the control pad to move the cursor to the letter you want to enter. Press **Y** or **B** buttons to select the letter and move to the next entry slot.
- When your password has been entered, press **START**.
- If your password is incorrect, a tone will notify you and you will have to change the password.



Strategy Notes 18

90-Day Limited Warranty

CAPCOM ENTERTAINMENT, INC. ("CAPCOM") warrants to the original consumer that this Super Nintendo Game Pak ("PAK") from CAPCOM shall be free from defects in material and workmanship for a period of 90 days from date of purchase. If a defect covered by this warranty occurs during this 90-day warranty period, CAPCOM will replace the PAK free of charge.

To receive this warranty service:

1. Notify the CAPCOM Consumer Service Department of the problem requiring warranty service by calling (408) 774-0400. Our Consumer Service Department is in operation from 8:30 a.m. to 5:00 p.m. Pacific Time, Monday through Friday.
2. If the CAPCOM service technician is unable to solve the problem by phone, he/she will provide you with a Return Merchandise Authorization number. Simply record this number on the outside of your shipping package, and return the entire PAK freight prepaid at your own risk of damage or delivery. We recommend sending your PAK certified mail or UPS. Please include your sales slip or similar proof-of-purchase within the 90-day warranty period to:

CAPCOM
Consumer Service Department
475 Oakmead Parkway
Sunnyvale, CA 94086

Warranty

This warranty shall not apply if the PAK has been damaged by negligence, accident, unreasonable use, modification, tampering or by other causes unrelated to the defective materials or workmanship.

REPAIRS AFTER EXPIRATION OF WARRANTY:

If the PAK develops a problem after the 90-day warranty period, you may contact the CAPCOM Consumer Service Department at the phone number noted previously. If the CAPCOM service technician is unable to solve the problem by phone, he/she may provide you with a Return Merchandise Authorization number. You may then record this number on the outside of your shipping package and return the defective PAK freight prepaid at your own risk of damage or delivery to CAPCOM, enclosing a check or money for \$20.00 (U.S. funds only) payable to CAPCOM. We recommend sending your CD-ROM certified mail or UPS. CAPCOM will replace the PAK, subject to the conditions above. If replacement PAKs are not available, the defective product will be returned to you and the \$20.00 payment refunded.

WARRANTY LIMITATIONS:

ANY APPLICABLE IMPLIED WARRANTIES, INCLUDING WARRANTIES OF MERCHANTABILITY AND FITNESS FOR A PARTICULAR PURPOSE, ARE HEREBY LIMITED TO NINETY (90) DAYS FROM THE DATE OF PURCHASE AND ARE SUBJECT TO THE CONDITIONS SET FORTH HEREIN. IN NO EVENT SHALL CAPCOM BE LIABLE FOR CONSEQUENTIAL OR INCIDENTAL DAMAGES RESULTING FROM THE BREACH OF ANY EXPRESS OR IMPLIED WARRANTIES.

The provisions of this warranty are valid in the United States and Canada only. Some states and provinces do not allow limitations on how long an implied warranty lasts or exclusions of consequential or incidental damages, so the above limitations and exclusions may not apply to you. This warranty gives you specific legal rights, and you may have other rights which vary from state to state or province to province.



CAPCOM ENTERTAINMENT, INC.
Consumer Service Department
475 Oakmead Parkway
Sunnyvale, California 94086
(408) 774-0400

CAPCOM HINT LINE AND GAME COUNSELING

Hints are available: 1-900-680-clue (1-900-680-2583)

\$.79 per minute for 24-hr. pre-recorded information

\$.99 per minute for live Game Counselor assistance

From Canada 1-900-677-2272 (\$1.25 per minute)

Must be 18 years or older, or have parental permission.

Game Counselors available:

Monday-Friday 8:30 a.m. - 5:00 p.m. Pacific Standard Time.

This hint line supports games produced by CAPCOM ENTERTAINMENT, INC. only.

No hints will be given on our Consumer Service line.

You must have a touch-tone phone to use this service.

CAPCOM ON-LINE

<http://www.capcom.com>

Compuserve: 76702.2710@compuserve.com

Visit Capcom's website for the latest info on Capcom's hottest games, release dates, tips and tricks, quicktime movies, contests or to e-mail us your comments and suggestions.

Printed in USA.